


Anti-CPSF6 antibody ab99347

[8 References](#) [4 Images](#)

Overview

Product name	Anti-CPSF6 antibody
Description	Rabbit polyclonal to CPSF6
Host species	Rabbit
Tested applications	Suitable for: IHC-P, WB, IP
Species reactivity	Reacts with: Mouse, Human Predicted to work with: Rat, Rabbit, Chicken, Guinea pig, Cow, Pig, Xenopus laevis, Chimpanzee, Zebrafish, Rhesus monkey, Gorilla, Tilapia, Orangutan, Xenopus tropicalis, Medaka fish 
Immunogen	Synthetic peptide, corresponding to a region between residue 1 and 50 of Human CPSF6 (NP_008938.1).
General notes	<p>The Life Science industry has been in the grips of a reproducibility crisis for a number of years. Abcam is leading the way in addressing this with our range of recombinant monoclonal antibodies and knockout edited cell lines for gold-standard validation. Please check that this product meets your needs before purchasing.</p> <p>If you have any questions, special requirements or concerns, please send us an inquiry and/or contact our Support team ahead of purchase. Recommended alternatives for this product can be found below, along with publications, customer reviews and Q&As</p>

Properties

Form	Liquid
Storage instructions	Shipped at 4°C. Upon delivery aliquot and store at -20°C. Avoid freeze / thaw cycles.
Storage buffer	pH: 6.8 Preservative: 0.09% Sodium azide Constituents: 0.1% BSA, Tris buffered saline
Purity	Immunogen affinity purified
Purification notes	ab99347 was affinity purified using an epitope specific to CPSF6 immobilized on solid support.
Clonality	Polyclonal
Isotype	IgG

Applications

The Abpromise guarantee

Our **Abpromise guarantee** covers the use of ab99347 in the following tested applications.

The application notes include recommended starting dilutions; optimal dilutions/concentrations should be determined by the end user.

Application	Abreviews	Notes
IHC-P		Use at an assay dependent concentration.
WB		1/2000 - 1/10000. Predicted molecular weight: 59 kDa.
IP		Use at 2-5 µg/mg of lysate.

Target

Function

Component of the cleavage factor Im complex (CFIm) that plays a key role in pre-mRNA 3'-processing. Involved in association with NUDT21/CPSF5 in pre-mRNA 3'-end poly(A) site cleavage and poly(A) addition. CPSF6 binds to cleavage and polyadenylation RNA substrates and promotes RNA looping.

Sequence similarities

Belongs to the RRM CPSF6/7 family.
Contains 1 RRM (RNA recognition motif) domain.

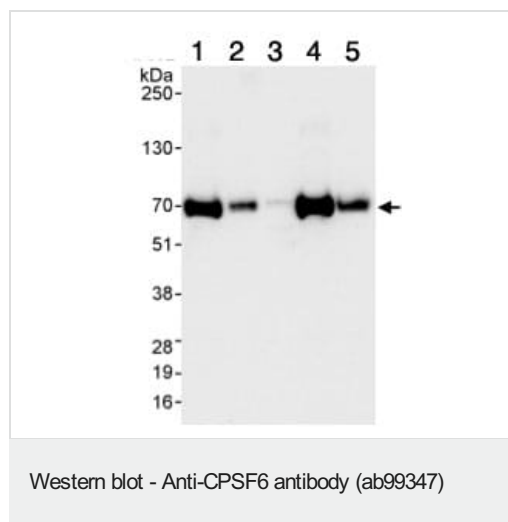
Post-translational modifications

Phosphorylated upon DNA damage, probably by ATM or ATR.

Cellular localization

Nucleus. In punctate subnuclear structures localized adjacent to nuclear speckles, called paraspeckles.

Images



All lanes : Anti-CPSF6 antibody (ab99347) at 0.04 µg/ml

Lane 1 : HeLa whole cell lysate at 50 µg

Lane 2 : HeLa whole cell lysate at 15 µg

Lane 3 : HeLa whole cell lysate at 5 µg

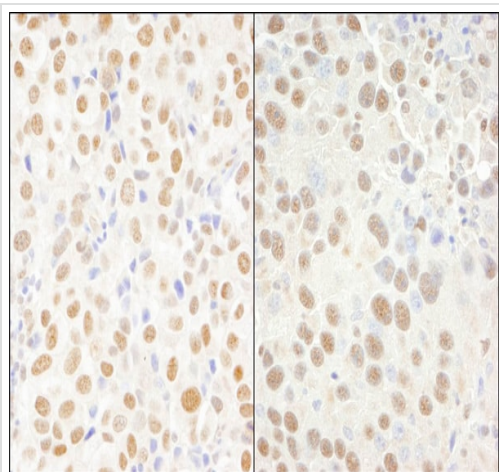
Lane 4 : 293T whole cell lysate at 50 µg

Lane 5 : NIH 3T3 whole cell lysate at 50 µg

Developed using the ECL technique.

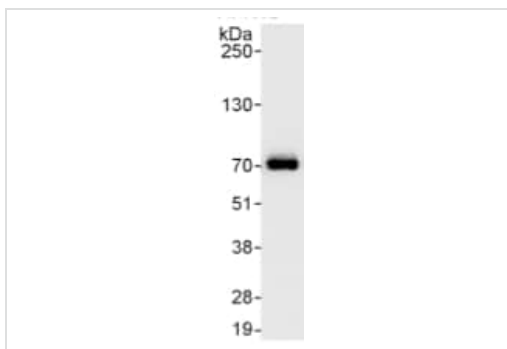
Predicted band size: 59 kDa

Exposure time: 10 seconds



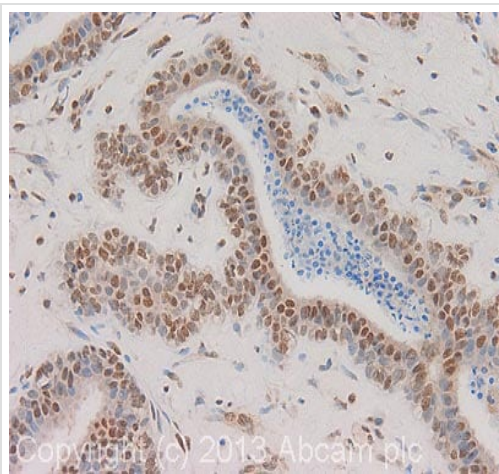
Immunohistochemistry (Formalin/PFA-fixed paraffin-embedded sections) - Anti-CPSF6 antibody (ab99347)

Immunohistochemistry (Formalin/PFA-fixed paraffin-embedded sections) analysis of human breast carcinoma (left) and mouse renal cell carcinoma (right) tissues labelling CPSF6 with ab99347 at 1/200 (1µg/ml). Detection: DAB.



Immunoprecipitation - Anti-CPSF6 antibody (ab99347)

Detection of CPSF6 by Western Blot of Immunoprecipitate. ab99347 at 1µg/ml staining CPSF6 in HeLa whole cell lysate immunoprecipitated using ab99347 at 3µg/mg lysate (1 mg/IP; 20% of IP loaded/lane). Detection: Chemiluminescence with exposure time of 1 seconds.



Immunohistochemistry (Formalin/PFA-fixed paraffin-embedded sections) - Anti-CPSF6 antibody (ab99347)

IHC image of CPSF6 staining in human breast fibroadenoma formalin fixed paraffin embedded tissue section, performed on a Leica Bond™ system using the standard protocol F. The section was pre-treated using heat mediated antigen retrieval with sodium citrate buffer (pH6, epitope retrieval solution 1) for 20 mins. The section was then incubated with ab99347, 1 µg/ml, for 15 mins at room temperature and detected using an HRP conjugated compact polymer system. DAB was used as the chromogen. The section was then counterstained with haematoxylin and mounted with DPX.

For other IHC staining systems (automated and non-automated) customers should optimize variable parameters such as antigen retrieval conditions, primary antibody concentration and antibody incubation times.

Please note: All products are "FOR RESEARCH USE ONLY. NOT FOR USE IN DIAGNOSTIC PROCEDURES"

Our Abpromise to you: Quality guaranteed and expert technical support

- Replacement or refund for products not performing as stated on the datasheet
- Valid for 12 months from date of delivery
- Response to your inquiry within 24 hours
- We provide support in Chinese, English, French, German, Japanese and Spanish
- Extensive multi-media technical resources to help you
- We investigate all quality concerns to ensure our products perform to the highest standards

If the product does not perform as described on this datasheet, we will offer a refund or replacement. For full details of the Abpromise, please visit <https://www.abcam.com/abpromise> or contact our technical team.

Terms and conditions

- Guarantee only valid for products bought direct from Abcam or one of our authorized distributors