

Product datasheet

Anti-CPSF73 antibody [EPR7468] ab131245

Recombinant RabMAb

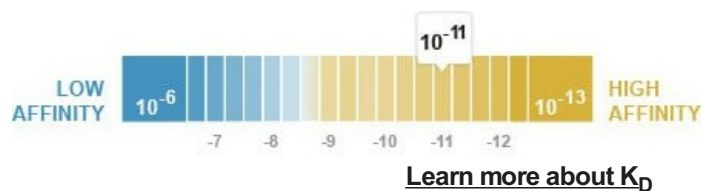
★★★★★ [2 Abreviews](#) [2 References](#) [6 Images](#)

Overview

Product name	Anti-CPSF73 antibody [EPR7468]
Description	Rabbit monoclonal [EPR7468] to CPSF73
Host species	Rabbit
Tested applications	Suitable for: Flow Cyt (Intra), WB, ICC/IF Unsuitable for: IHC-P or IP
Species reactivity	Reacts with: Mouse, Rat, Human
Immunogen	Synthetic peptide within Human CPSF73 aa 650-750. The exact sequence is proprietary.
Positive control	WB: HeLa, 293T, Jurkat, Caco-2, RAW 264.7, PC-12, and NIH/3T3 cell lysates. ICC/IF: HeLa cells. Flow Cyt (intra): HeLa cells.
General notes	<p>This product is a recombinant monoclonal antibody, which offers several advantages including:</p> <ul style="list-style-type: none"> - High batch-to-batch consistency and reproducibility - Improved sensitivity and specificity - Long-term security of supply - Animal-free production <p>For more information see here.</p> <p>Our RabMAb[®] technology is a patented hybridoma-based technology for making rabbit monoclonal antibodies. For details on our patents, please refer to RabMAb[®] patents.</p>

Properties

Form	Liquid
Storage instructions	Shipped at 4°C. Store at -20°C. Stable for 12 months at -20°C.
Dissociation constant (K_D)	K _D = 1.70 x 10 ⁻¹¹ M



Storage buffer	pH: 7.20 Preservative: 0.01% Sodium azide
-----------------------	--

Constituents: 9% PBS, 40% Glycerol (glycerin, glycerine), 0.05% BSA, 50% Tissue culture supernatant

Purity	Tissue culture supernatant
Clonality	Monoclonal
Clone number	EPR7468
Isotype	IgG

Applications

The Abpromise guarantee Our **Abpromise guarantee** covers the use of ab131245 in the following tested applications. The application notes include recommended starting dilutions; optimal dilutions/concentrations should be determined by the end user.

Application	Abreviews	Notes
Flow Cyt (Intra)		1/250.
WB	★★★★★ (1)	1/1000 - 1/10000. Predicted molecular weight: 77 kDa.
ICC/IF	★★★★★ (1)	1/50 - 1/100.

Application notes Is unsuitable for IHC-P or IP.

Target

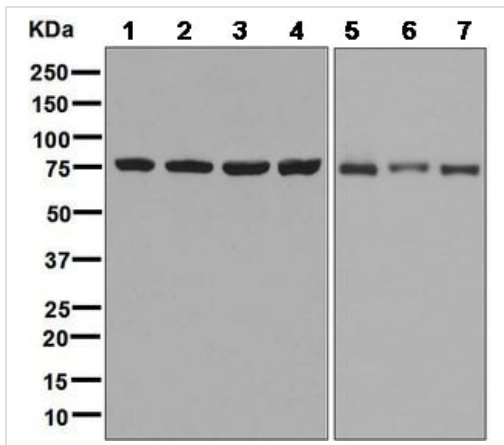
Function Component of the cleavage and polyadenylation specificity factor (CPSF) complex that play a key role in pre-mRNA 3'-end formation, recognizing the AAUAAA signal sequence and interacting with poly(A) polymerase and other factors to bring about cleavage and poly(A) addition. Has endonuclease activity, and functions as mRNA 3'-end-processing endonuclease. Also involved in the histone 3'-end pre-mRNA processing. U7 snRNP-dependent protein that induces both the 3'-endoribonucleolytic cleavage of histone pre-mRNAs and acts as a 5' to 3' exonuclease for degrading the subsequent downstream cleavage product (DCP) of mature histone mRNAs. Cleavage occurs after the 5'-ACCCA-3' sequence in the histone pre-mRNA leaving a 3'-hydroxyl group on the upstream fragment containing the stem loop (SL) and 5' phosphate on the downstream cleavage product (DCP) starting with CU nucleotides. The U7-dependent 5' to 3' exonuclease activity is processive and degrades the DCP RNA substrate even after complete removal of the U7-binding site. Binds to the downstream cleavage product (DCP) of histone pre-mRNAs and the cleaved DCP RNA substrate in a U7 snRNP dependent manner.

Sequence similarities Belongs to the metallo-beta-lactamase superfamily. RNA-metabolizing metallo-beta-lactamase-like family. CPSF3 subfamily.

Post-translational modifications Sumoylated on Lys-462, Lys-465 and Lys-545, preferentially by SUMO3.

Cellular localization Nucleus.

Images



Western blot - Anti-CPSF73 antibody [EPR7468] (ab131245)

All lanes : Anti-CPSF73 antibody [EPR7468] (ab131245) at 1/1000 dilution

Lane 1 : HeLa cell lysate

Lane 2 : 293T cell lysate

Lane 3 : Jurkat cell lysate

Lane 4 : Caco-2 cell lysate

Lane 5 : RAW 264.7 cell lysate

Lane 6 : PC-12 cell lysate

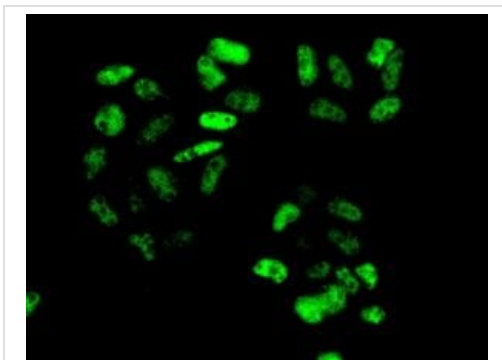
Lane 7 : NIH/3T3 cell lysate

Lysates/proteins at 10 µg per lane.

Secondary

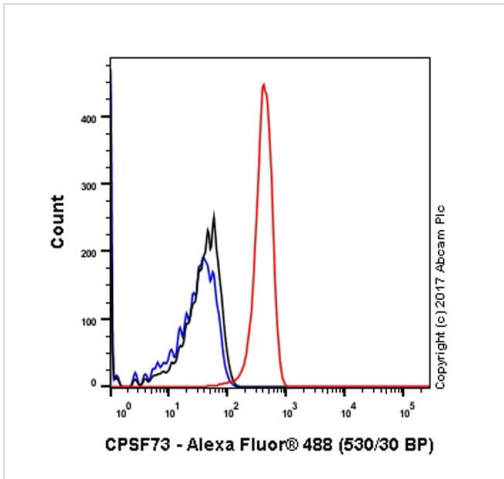
All lanes : HRP labelled goat anti-rabbit at 1/2000 dilution

Predicted band size: 77 kDa



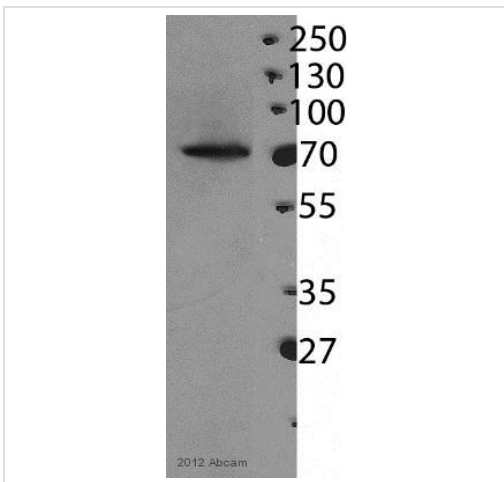
Immunocytochemistry/ Immunofluorescence - Anti-CPSF73 antibody [EPR7468] (ab131245)

Immunofluorescence analysis of HeLa cells labelling CPSF73 with ab131245 at 1/50 dilution.



Flow Cytometry (Intracellular) - Anti-CPSF73 antibody [EPR7468] (ab131245)

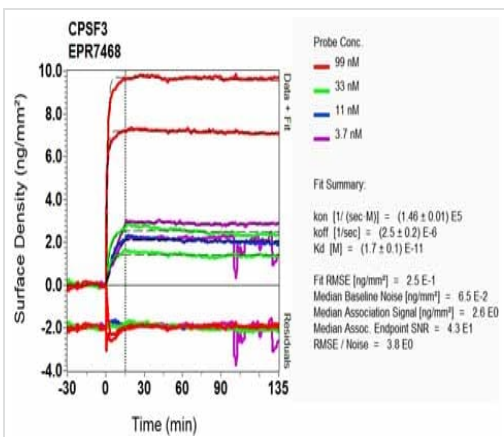
Intracellular Flow Cytometry analysis of HeLa (human cervix adenocarcinoma) cells labeling CPSF73 (red) with ab131245 at a 1/250 dilution. Cells were fixed with 4% paraformaldehyde and permeabilized with 90% methanol. A goat anti-rabbit IgG (Alexa Fluor® 488) (**ab150077**) was used as the secondary antibody at a 1/2000 dilution. Black - Rabbit monoclonal IgG (**ab172730**). Blue (unlabeled control) - Cells without incubation with primary and secondary antibodies.



Western blot - Anti-CPSF73 antibody [EPR7468] (ab131245)

Anti-CPSF73 antibody [EPR7468] (ab131245) at 1/1000 dilution + U2OS whole cell lysate at 100 µg

Predicted band size: 77 kDa



O1-RD Scanning - Anti-CPSF73 antibody [EPR7468] (ab131245)

Equilibrium dissociation constant (K_D)

Learn more about K_D

[Click here to learn more about \$K_D\$](#)

Why choose a recombinant antibody?



Research with confidence
Consistent and reproducible results



Long-term and scalable supply
Recombinant technology



Success from the first experiment
Confirmed specificity



Ethical standards compliant
Animal-free production

Anti-CPSF73 antibody [EPR7468] (ab131245)

Please note: All products are "FOR RESEARCH USE ONLY. NOT FOR USE IN DIAGNOSTIC PROCEDURES"

Our Abpromise to you: Quality guaranteed and expert technical support

- Replacement or refund for products not performing as stated on the datasheet
- Valid for 12 months from date of delivery
- Response to your inquiry within 24 hours
- We provide support in Chinese, English, French, German, Japanese and Spanish
- Extensive multi-media technical resources to help you
- We investigate all quality concerns to ensure our products perform to the highest standards

If the product does not perform as described on this datasheet, we will offer a refund or replacement. For full details of the Abpromise, please visit <https://www.abcam.com/abpromise> or contact our technical team.

Terms and conditions

- Guarantee only valid for products bought direct from Abcam or one of our authorized distributors