




Anti-CPT1A antibody ab53532

[3 References](#) [1 Image](#)

Overview

Product name	Anti-CPT1A antibody
Description	Goat polyclonal to CPT1A
Host species	Goat
Tested applications	Suitable for: WB
Species reactivity	Reacts with: Human Predicted to work with: Chimpanzee, Rhesus monkey 
Immunogen	Synthetic peptide: C-DPAQTVEQRLKLFK , corresponding to internal sequence amino acids 621-634 of Human CPT1A  Run BLAST with  Run BLAST with
Positive control	Human Liver lysate
General notes	<p>The Life Science industry has been in the grips of a reproducibility crisis for a number of years. Abcam is leading the way in addressing this with our range of recombinant monoclonal antibodies and knockout edited cell lines for gold-standard validation. Please check that this product meets your needs before purchasing.</p> <p>If you have any questions, special requirements or concerns, please send us an inquiry and/or contact our Support team ahead of purchase. Recommended alternatives for this product can be found below, along with publications, customer reviews and Q&As</p>

Properties

Form	Liquid
Storage instructions	Shipped at 4°C. Upon delivery aliquot and store at -20°C or -80°C. Avoid repeated freeze / thaw cycles.
Storage buffer	pH: 7.30 Preservative: 0.02% Sodium azide Constituents: 0.5% BSA, 0.5% Tris buffered saline
Purity	Immunogen affinity purified
Purification notes	Purified from goat serum by ammonium sulphate precipitation followed by antigen affinity chromatography using the immunizing peptide.

Clonality	Polyclonal
Isotype	IgG

Applications

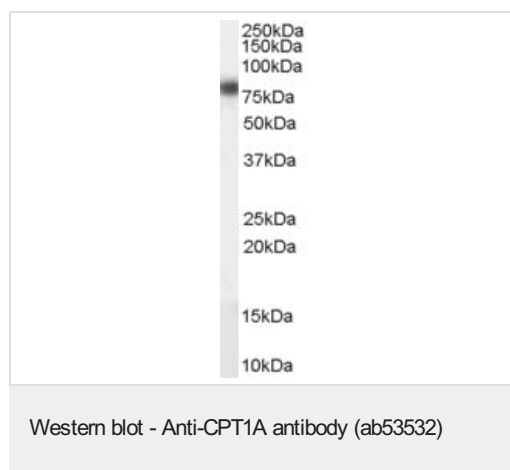
The Abpromise guarantee Our **Abpromise guarantee** covers the use of ab53532 in the following tested applications. The application notes include recommended starting dilutions; optimal dilutions/concentrations should be determined by the end user.

Application	Abreviews	Notes
WB		Use a concentration of 1 - 3 µg/ml. Detects a band of approximately 80 kDa (predicted molecular weight: 86 kDa). 1 hour primary incubation is recommended for this product.

Target

Tissue specificity	Strong expression in kidney and heart, and lower in liver and skeletal muscle.
Pathway	Lipid metabolism; fatty acid beta-oxidation.
Involvement in disease	Defects in CPT1A are the cause of carnitine palmitoyltransferase 1A deficiency (CPT1AD) [MIM:255120]; also known as CPT-I deficiency or CPT1A deficiency. CPT1AD is a rare autosomal recessive metabolic disorder of long-chain fatty acid oxidation characterized by severe episodes of hypoketotic hypoglycemia usually occurring after fasting or illness. Onset is in infancy or early childhood.
Sequence similarities	Belongs to the carnitine/choline acetyltransferase family.
Cellular localization	Mitochondrion outer membrane.

Images



Anti-CPT1A antibody (ab53532) at 0.1 µg/ml + Human Liver lysate at 35 µg

Predicted band size: 86 kDa

Observed band size: 80 kDa

Primary incubation was 1 hour. Detected by chemiluminescence. RIPA buffer used.

Please note: All products are "FOR RESEARCH USE ONLY. NOT FOR USE IN DIAGNOSTIC PROCEDURES"

Our Abpromise to you: Quality guaranteed and expert technical support

- Replacement or refund for products not performing as stated on the datasheet
- Valid for 12 months from date of delivery
- Response to your inquiry within 24 hours

- We provide support in Chinese, English, French, German, Japanese and Spanish
- Extensive multi-media technical resources to help you
- We investigate all quality concerns to ensure our products perform to the highest standards

If the product does not perform as described on this datasheet, we will offer a refund or replacement. For full details of the Abpromise, please visit <https://www.abcam.com/abpromise> or contact our technical team.

Terms and conditions

- Guarantee only valid for products bought direct from Abcam or one of our authorized distributors