


Product datasheet

Anti-CPT1B antibody ab134988

★★★★★ [4 Abreviews](#) [23 References](#) [2 Images](#)

Overview

Product name	Anti-CPT1B antibody
Description	Rabbit polyclonal to CPT1B
Host species	Rabbit
Specificity	Replenishment batches of our polyclonal antibody, ab134988 are tested in WB. Previous batches were additionally validated in IHC-P. This application is still expected to work and is covered by our Abpromise guarantee. You may also be interested in our alternative recombinant antibody, ab134135 .
Tested applications	Suitable for: IHC-P, WB
Species reactivity	Reacts with: Human Predicted to work with: Mouse, Horse, Dog, Pig, Chimpanzee, Macaque monkey 
Immunogen	Synthetic peptide corresponding to Human CPT1B aa 200-300 conjugated to keyhole limpet haemocyanin. Database link: Q92523
Positive control	This antibody gave a positive signal in the following tissue lysates: Human Heart; Human Fetal Heart; Human Skeletal Muscle. IHC-P: Human heart FFPE tissue sections.
General notes	<p>The Life Science industry has been in the grips of a reproducibility crisis for a number of years. Abcam is leading the way in addressing this with our range of recombinant monoclonal antibodies and knockout edited cell lines for gold-standard validation. Please check that this product meets your needs before purchasing.</p> <p>If you have any questions, special requirements or concerns, please send us an inquiry and/or contact our Support team ahead of purchase. Recommended alternatives for this product can be found below, along with publications, customer reviews and Q&As</p>

Properties

Form	Liquid
Storage instructions	Shipped at 4°C. Store at +4°C short term (1-2 weeks). Upon delivery aliquot. Store at -20°C or -80°C. Avoid freeze / thaw cycle.
Storage buffer	pH: 7.40 Preservative: 0.02% Sodium azide Constituent: PBS

Batches of this product that have a concentration < 1mg/ml may have BSA added as a stabilising agent. If you would like information about the formulation of a specific lot, please contact our scientific support team who will be happy to help.

Purity Immunogen affinity purified
Clonality Polyclonal
Isotype IgG

Applications

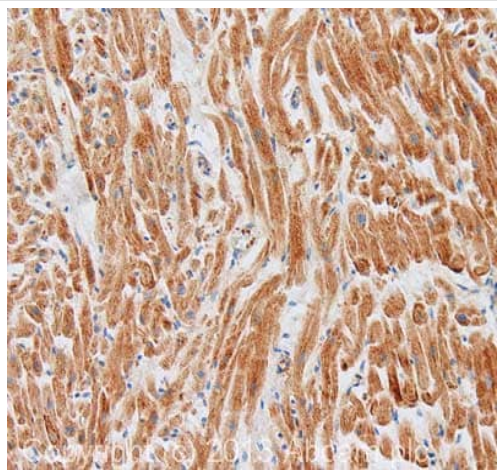
The Abpromise guarantee Our **Abpromise guarantee** covers the use of ab134988 in the following tested applications. The application notes include recommended starting dilutions; optimal dilutions/concentrations should be determined by the end user.

Application	Abreviews	Notes
IHC-P		Use a concentration of 5 µg/ml. Perform heat mediated antigen retrieval with citrate buffer pH 6 before commencing with IHC staining protocol.
WB	★★★★★ (4)	Use a concentration of 1 µg/ml. Detects a band of approximately 87 kDa (predicted molecular weight: 87 kDa).

Target

Tissue specificity Strong expression in heart and skeletal muscle. No expression in liver and kidney.
Pathway Lipid metabolism; fatty acid beta-oxidation.
Sequence similarities Belongs to the carnitine/choline acetyltransferase family.
Cellular localization Mitochondrion outer membrane.

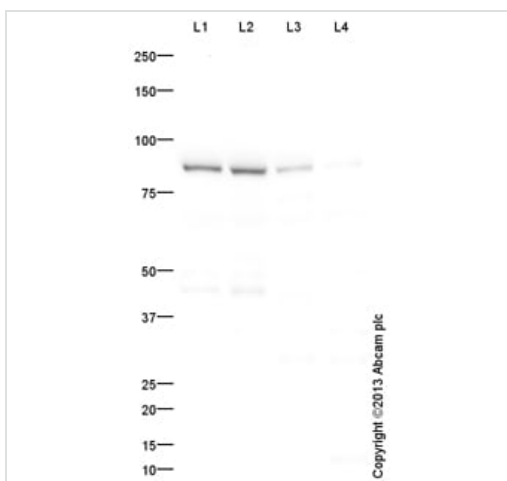
Images



Immunohistochemistry (Formalin/PFA-fixed paraffin-embedded sections) - Anti-CPT1B antibody (ab134988)

IHC image of CPT1B staining in human heart formalin fixed paraffin embedded tissue section, performed on a Leica Bond system using the standard protocol F. The section was pre-treated using heat mediated antigen retrieval with sodium citrate buffer (pH6, epitope retrieval solution 1) for 20 mins. The section was then incubated with ab134988, 5µg/ml, for 15 mins at room temperature and detected using an HRP conjugated compact polymer system. DAB was used as the chromogen. The section was then counterstained with haematoxylin and mounted with DPX.

For other IHC staining systems (automated and non-automated) customers should optimize variable parameters such as antigen retrieval conditions, primary antibody concentration and antibody incubation times.



Western blot - Anti-CPT1B antibody (ab134988)

All lanes : Anti-CPT1B antibody (ab134988) at 1 µg/ml (Milk blocking 3%)

Lane 1 : Heart (Human) Tissue Lysate - adult normal tissue

Lane 2 : Heart (Human) Whole Cell Lysate - fetal normal tissue

Lane 3 : Skeletal Muscle (Human) Tissue Lysate - adult normal tissue

Lane 4 : Liver (Human) Tissue Lysate - adult normal tissue (Negative control)

Lysates/proteins at 25 µg per lane.

Secondary

All lanes : Goat Anti-Rabbit IgG H&L (HRP) ([ab97051](#)) at 1/10000 dilution

Developed using the ECL technique.

Performed under reducing conditions.

Predicted band size: 87 kDa

Observed band size: 87 kDa

Exposure time: 4 minutes

Please note that Human Liver tissue lysate in Lane 4 was used as a negative control.

This blot was produced using a 10% Bis-tris gel under the MOPS buffer system. The gel was run at 200V for 50 minutes before being transferred onto a Nitrocellulose membrane at 30V for 70 minutes. The membrane was then blocked for an hour using 3% Milk before being incubated with ab134988 overnight at 4°C. Antibody binding was detected using an anti-rabbit antibody conjugated to HRP, and visualised using ECL development solution.

Please note: All products are "FOR RESEARCH USE ONLY. NOT FOR USE IN DIAGNOSTIC PROCEDURES"

Our Abpromise to you: Quality guaranteed and expert technical support

- Replacement or refund for products not performing as stated on the datasheet
- Valid for 12 months from date of delivery
- Response to your inquiry within 24 hours

- We provide support in Chinese, English, French, German, Japanese and Spanish
- Extensive multi-media technical resources to help you
- We investigate all quality concerns to ensure our products perform to the highest standards

If the product does not perform as described on this datasheet, we will offer a refund or replacement. For full details of the Abpromise, please visit <https://www.abcam.com/abpromise> or contact our technical team.

Terms and conditions

- Guarantee only valid for products bought direct from Abcam or one of our authorized distributors