


Product datasheet

Anti-Cpt1c/CPT1-B antibody ab189182

[2 Abreviews](#) [2 References](#) [2 Images](#)

Overview

Product name	Anti-Cpt1c/CPT1-B antibody
Description	Goat polyclonal to Cpt1c/CPT1-B
Host species	Goat
Specificity	ab189182 is expected to recognise both reported isoforms (NP_689572.1; NP_001129524.1). Reported variants represent identical protein (NP_001186681.1; NP_001186682.1; NP_689572.1).
Tested applications	Suitable for: IHC-P, WB
Species reactivity	Reacts with: Human Predicted to work with: Mouse, Rat, Horse, Hamster, Cow, Dog, Monkey, Gorilla, Common marmoset, Orangutan 
Immunogen	Synthetic peptide corresponding to Human Cpt1c/CPT1-B aa 700-800 (internal sequence) (Cysteine residue). (NP_689572.1). Database link: Q8TCG5 Run BLAST with Run BLAST with
Positive control	Human testis tissue; Human frontal cortex lysate.
General notes	<p>The Life Science industry has been in the grips of a reproducibility crisis for a number of years. Abcam is leading the way in addressing this with our range of recombinant monoclonal antibodies and knockout edited cell lines for gold-standard validation. Please check that this product meets your needs before purchasing.</p> <p>If you have any questions, special requirements or concerns, please send us an inquiry and/or contact our Support team ahead of purchase. Recommended alternatives for this product can be found below, along with publications, customer reviews and Q&As</p>

Properties

Form	Liquid
Storage instructions	Shipped at 4°C. Store at +4°C short term (1-2 weeks). Upon delivery aliquot. Store at -20°C long term. Avoid freeze / thaw cycle.
Storage buffer	pH: 7.30 Preservative: 0.02% Sodium azide Constituents: 0.5% BSA, 99% Tris buffered saline

Purity	Immunogen affinity purified
Clonality	Polyclonal
Isotype	IgG

Applications

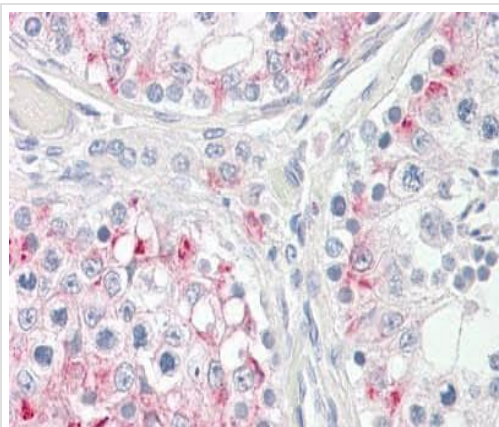
The Abpromise guarantee Our **Abpromise guarantee** covers the use of ab189182 in the following tested applications. The application notes include recommended starting dilutions; optimal dilutions/concentrations should be determined by the end user.

Application	Abreviews	Notes
IHC-P		Use a concentration of 3.75 µg/ml. Perform heat mediated antigen retrieval before commencing with IHC staining protocol.
WB		Use a concentration of 1 - 3 µg/ml. Detects a band of approximately 100 kDa (predicted molecular weight: 91 kDa).

Target

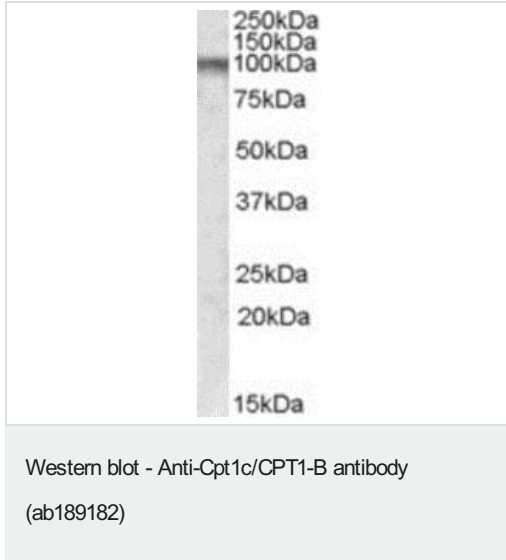
Tissue specificity	Expressed predominantly in brain and testis.
Pathway	Lipid metabolism; fatty acid beta-oxidation.
Sequence similarities	Belongs to the carnitine/choline acetyltransferase family.
Cellular localization	Mitochondrion outer membrane. Cell junction > synapse.

Images



Immunohistochemical analysis of formalin-fixed, paraffin-embedded Human testis tissue labeling Cpt1c/CPT1-B with ab189182 at 3.75 µg/ml.

Immunohistochemistry (Formalin/PFA-fixed paraffin-embedded sections) - Anti-Cpt1c/CPT1-B antibody (ab189182)



Anti-Cpt1c/CPT1-B antibody (ab189182) at 1 µg/ml + Human frontal cortex lysate (in RIPA buffer) at 35 µg

Developed using the ECL technique.

Predicted band size: 91 kDa

Observed band size: 100 kDa

Primary incubation was 1 hour.

Please note: All products are "FOR RESEARCH USE ONLY. NOT FOR USE IN DIAGNOSTIC PROCEDURES"

Our Abpromise to you: Quality guaranteed and expert technical support

- Replacement or refund for products not performing as stated on the datasheet
- Valid for 12 months from date of delivery
- Response to your inquiry within 24 hours
- We provide support in Chinese, English, French, German, Japanese and Spanish
- Extensive multi-media technical resources to help you
- We investigate all quality concerns to ensure our products perform to the highest standards

If the product does not perform as described on this datasheet, we will offer a refund or replacement. For full details of the Abpromise, please visit <https://www.abcam.com/abpromise> or contact our technical team.

Terms and conditions

- Guarantee only valid for products bought direct from Abcam or one of our authorized distributors