

Product datasheet

Anti-CR1L antibody [EPR9604(B)] ab169543

Recombinant RabMAb

3 Images

Overview

Product name	Anti-CR1L antibody [EPR9604(B)]
Description	Rabbit monoclonal [EPR9604(B)] to CR1L
Host species	Rabbit
Tested applications	Suitable for: Flow Cyt (Intra), WB Unsuitable for: ICC/IF, IHC-P or IP
Species reactivity	Reacts with: Human
Immunogen	Synthetic peptide within Human CR1L aa 500 to the C-terminus. The exact sequence is proprietary. Database link: Q2VPA4
Positive control	HepG2, Ramos, K562 and MOLT4 cell lysates; HepG2 cells.
General notes	<p>This product is a recombinant monoclonal antibody, which offers several advantages including:</p> <ul style="list-style-type: none">- High batch-to-batch consistency and reproducibility- Improved sensitivity and specificity- Long-term security of supply- Animal-free production <p>For more information see here.</p> <p>Our RabMAb[®] technology is a patented hybridoma-based technology for making rabbit monoclonal antibodies. For details on our patents, please refer to RabMAb[®] patents.</p> <p>Mouse, Rat: We have preliminary internal testing data to indicate this antibody may not react with these species. Please contact us for more information.</p>

Properties

Form	Liquid
Storage instructions	Shipped at 4°C. Store at +4°C short term (1-2 weeks). Upon delivery aliquot. Store at -20°C long term.
Storage buffer	pH: 7.2 Preservative: 0.01% Sodium azide Constituents: 9% PBS, 40% Glycerol (glycerin, glycerine), 0.05% BSA, 50% Tissue culture supernatant

Purity	Tissue culture supernatant
Clonality	Monoclonal
Clone number	EPR9604(B)
Isotype	IgG

Applications

The Abpromise guarantee Our **Abpromise guarantee** covers the use of ab169543 in the following tested applications.

The application notes include recommended starting dilutions; optimal dilutions/concentrations should be determined by the end user.

Application	Abreviews	Notes
Flow Cyt (Intra)		1/100 - 1/500. ab172730 - Rabbit monoclonal IgG, is suitable for use as an isotype control with this antibody.
WB		1/1000 - 1/10000. Detects a band of approximately 64 kDa (predicted molecular weight: 63 kDa).

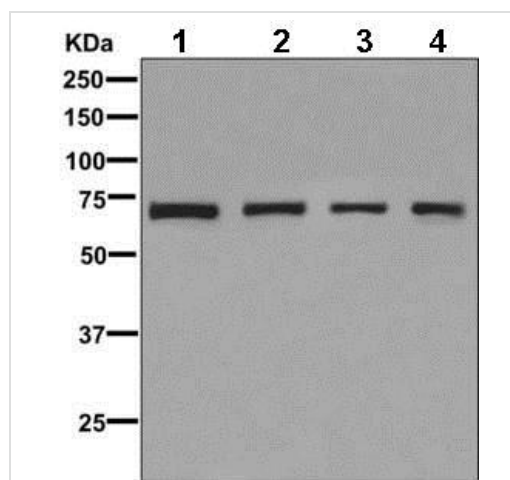
Application notes Is unsuitable for ICC/IF, IHC-P or IP.

Target

Relevance Interacts with iC4 (methylamine-treated C4) but not for iC3 (methylamine-treated C3). Belongs to the receptors of complement activation (RCA) family. Contains 8 Sushi (CCP/SCR) domains.

Cellular localization Cytoplasm. Membrane. Secreted. Note: Predominantly found in association with the membrane fraction, but also located in the cytoplasm and in the supernatant.

Images



Western blot - Anti-CR1L antibody [EPR9604(B)] (ab169543)

All lanes : Anti-CR1L antibody [EPR9604(B)] (ab169543) at 1/1000 dilution

Lane 1 : HepG2 cell lysate

Lane 2 : Ramos cell lysate

Lane 3 : K562 cell lysate

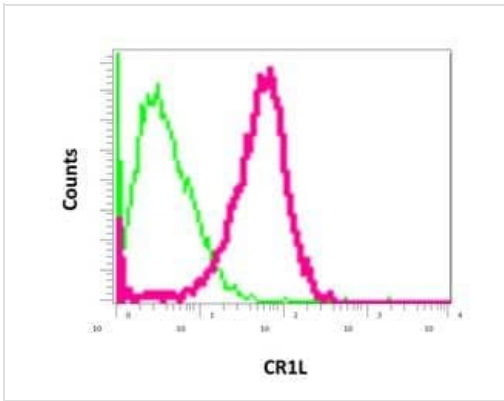
Lane 4 : MOLT4 cell lysate

Lysates/proteins at 10 µg per lane.

Secondary

All lanes : Goat anti-rabbit HRP at 1/2000 dilution





Predicted band size: 63 kDa



Intracellular flow cytometric analysis of permeabilized HepG2 cells labeling CR1L with ab169543 at 1/100 dilution (red) compared to a rabbit IgG (negative) (green).

Flow Cytometry (Intracellular) - Anti-CR1L antibody [EPR9604(B)] (ab169543)

Why choose a recombinant antibody?

 Research with confidence Consistent and reproducible results	 Long-term and scalable supply Recombinant technology
 Success from the first experiment Confirmed specificity	 Ethical standards compliant Animal-free production

Anti-CR1L antibody [EPR9604(B)] (ab169543)

Please note: All products are "FOR RESEARCH USE ONLY. NOT FOR USE IN DIAGNOSTIC PROCEDURES"

Our Abpromise to you: Quality guaranteed and expert technical support

- Replacement or refund for products not performing as stated on the datasheet
- Valid for 12 months from date of delivery
- Response to your inquiry within 24 hours
- We provide support in Chinese, English, French, German, Japanese and Spanish
- Extensive multi-media technical resources to help you
- We investigate all quality concerns to ensure our products perform to the highest standards

If the product does not perform as described on this datasheet, we will offer a refund or replacement. For full details of the Abpromise, please visit <https://www.abcam.com/abpromise> or contact our technical team.

Terms and conditions

- Guarantee only valid for products bought direct from Abcam or one of our authorized distributors