

## Product datasheet

### Anti-CRABP2 antibody [EPR14256(B)] ab181255

Recombinant **RabMAb**

[4 References](#) [7 Images](#)

#### Overview

<b>Product name</b>	Anti-CRABP2 antibody [EPR14256(B)]
<b>Description</b>	Rabbit monoclonal [EPR14256(B)] to CRABP2
<b>Host species</b>	Rabbit
<b>Tested applications</b>	<b>Suitable for:</b> Flow Cyt (Intra), IHC-P, WB, ICC/IF
<b>Species reactivity</b>	<b>Reacts with:</b> Human
<b>Immunogen</b>	Synthetic peptide. This information is proprietary to Abcam and/or its suppliers.
<b>Positive control</b>	MCF7 cell lysate; Human skin lysate; Human liver and kidney lysates; MCF7 cells.
<b>General notes</b>	<p>This product is a recombinant monoclonal antibody, which offers several advantages including:</p> <ul style="list-style-type: none"> <li>- High batch-to-batch consistency and reproducibility</li> <li>- Improved sensitivity and specificity</li> <li>- Long-term security of supply</li> <li>- Animal-free production</li> </ul> <p>For more information <a href="#">see here</a>.</p> <p>Our RabMAb<sup>®</sup> technology is a patented hybridoma-based technology for making rabbit monoclonal antibodies. For details on our patents, please refer to <a href="#">RabMAb<sup>®</sup> patents</a>.</p>

#### Properties

<b>Form</b>	Liquid
<b>Storage instructions</b>	Shipped at 4°C. Store at +4°C short term (1-2 weeks). Upon delivery aliquot. Store at -20°C long term. Avoid freeze / thaw cycle.
<b>Storage buffer</b>	<p>Preservative: 0.01% Sodium azide</p> <p>Constituents: 59% PBS, 0.05% BSA, 40% Glycerol (glycerin, glycerine)</p>
<b>Purity</b>	Protein A purified
<b>Clonality</b>	Monoclonal
<b>Clone number</b>	EPR14256(B)
<b>Isotype</b>	IgG

#### Applications

## Applications

### The Abpromise guarantee

Our **Abpromise guarantee** covers the use of ab181255 in the following tested applications.

The application notes include recommended starting dilutions; optimal dilutions/concentrations should be determined by the end user.

Application	Abreviews	Notes
Flow Cyt (Intra)		1/80. <b>ab172730</b> - Rabbit monoclonal IgG, is suitable for use as an isotype control with this antibody.
IHC-P		1/50 - 1/100. Perform heat mediated antigen retrieval with citrate buffer pH 6 before commencing with IHC staining protocol.
WB		1/10000 - 1/50000. Detects a band of approximately 16 kDa (predicted molecular weight: 16 kDa).
ICC/IF		1/100 - 1/250.

## Target

### Function

Transports retinoic acid to the nucleus. Regulates the access of retinoic acid to the nuclear retinoic acid receptors.

### Sequence similarities

Belongs to the calycin superfamily. Fatty-acid binding protein (FABP) family.

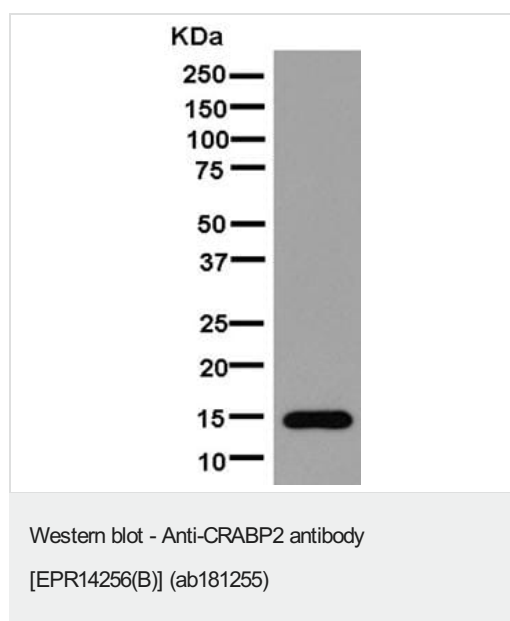
### Domain

Forms a beta-barrel structure that accommodates hydrophobic ligands in its interior.

### Cellular localization

Cytoplasm. Nucleus. Upon ligand binding, a conformation change exposes a nuclear localization motif and the protein is transported into the nucleus.

## Images



Anti-CRABP2 antibody [EPR14256(B)] (ab181255) at 1/50000 dilution + MCF7 cell lysate at 20 µg

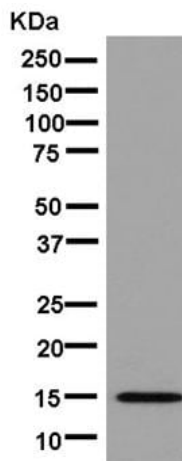
### Secondary

Goat Anti-Rabbit IgG, (H+L), Peroxidase conjugated at 1/1000 dilution

Developed using the ECL technique.

**Predicted band size:** 16 kDa

**Observed band size:** 16 kDa



Western blot - Anti-CRABP2 antibody  
[EPR14256(B)] (ab181255)

Anti-CRABP2 antibody [EPR14256(B)] (ab181255) at 1/10000 dilution + Human skin cell lysate at 10 µg

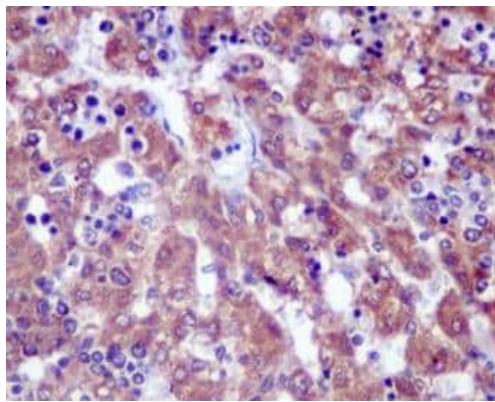
### Secondary

Goat Anti-Rabbit IgG H&L (HRP) ([ab136636](#)) at 1/500 dilution

Developed using the ECL technique.

**Predicted band size:** 16 kDa

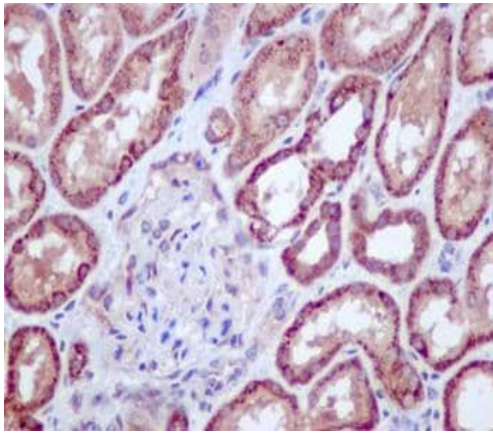
**Observed band size:** 16 kDa



Immunohistochemistry (Formalin/PFA-fixed paraffin-embedded sections) - Anti-CRABP2 antibody  
[EPR14256(B)] (ab181255)

Immunohistochemical analysis of paraffin-embedded, Human liver tissue labeling CRABP2 with ab181255 at a 1/100 dilution. Counter stained with hematoxylin.

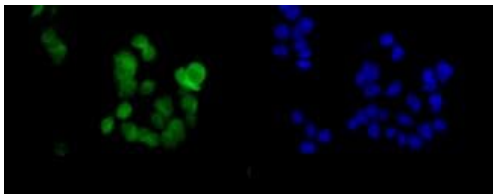
Perform heat mediated antigen retrieval with citrate buffer pH 6 before commencing with IHC staining protocol.



Immunohistochemistry (Formalin/PFA-fixed paraffin-embedded sections) - Anti-CRABP2 antibody [EPR14256(B)] (ab181255)

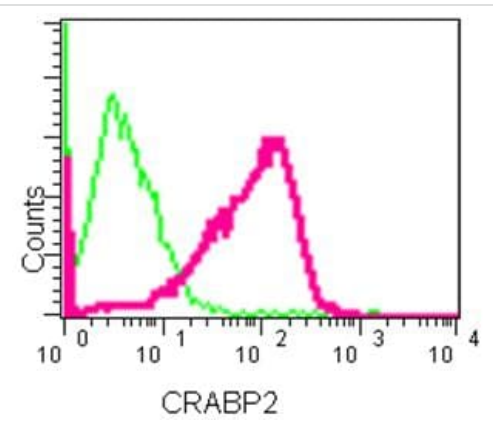
Immunohistochemical analysis of paraffin-embedded, Human kidney tissue labeling CRABP2 with ab181255 at a 1/100 dilution. Counter stained with hematoxylin.

Perform heat mediated antigen retrieval with citrate buffer pH 6 before commencing with IHC staining protocol.



Immunocytochemistry/ Immunofluorescence - Anti-CRABP2 antibody [EPR14256(B)] (ab181255)





Immunofluorescence analysis of, paraformaldehyde-fixed, MCF7 cells labeling CRABP2 with ab181255 at a 1/250 dilution. As secondary antibody Goat anti rabbit IgG (Alexa Fluor®488) (green) was used at a 1/200 dilution. DAPI staining in blue.



Flow Cytometry (Intracellular) - Anti-CRABP2 antibody [EPR14256(B)] (ab181255)

Intracellular Flow Cytometry analysis of, paraformaldehyde-fixed, MCF7 cells labeling CRABP2 (red) with ab181255 at a 1/80 dilution, or negative control rabbit monoclonal IgG (green). As secondary antibody goat anti rabbit IgG (FITC) was used at a 1/150 dilution.

Why choose a recombinant antibody?

 <p><b>Research with confidence</b> Consistent and reproducible results</p>	 <p><b>Long-term and scalable supply</b> Recombinant technology</p>
 <p><b>Success from the first experiment</b> Confirmed specificity</p>	 <p><b>Ethical standards compliant</b> Animal-free production</p>

Anti-CRABP2 antibody [EPR14256(B)] (ab181255)

**Please note:** All products are "FOR RESEARCH USE ONLY. NOT FOR USE IN DIAGNOSTIC PROCEDURES"

### Our Abpromise to you: Quality guaranteed and expert technical support

---

- Replacement or refund for products not performing as stated on the datasheet
- Valid for 12 months from date of delivery
- Response to your inquiry within 24 hours
- We provide support in Chinese, English, French, German, Japanese and Spanish
- Extensive multi-media technical resources to help you
- We investigate all quality concerns to ensure our products perform to the highest standards

If the product does not perform as described on this datasheet, we will offer a refund or replacement. For full details of the Abpromise, please visit <https://www.abcam.com/abpromise> or contact our technical team.

### Terms and conditions

---

- Guarantee only valid for products bought direct from Abcam or one of our authorized distributors