

## Product datasheet

# Anti-CRCP antibody [EPR9670(B)] ab139264

Recombinant RabMAb

[2 References](#) [13 Images](#)

### Overview

<b>Product name</b>	Anti-CRCP antibody [EPR9670(B)]
<b>Description</b>	Rabbit monoclonal [EPR9670(B)] to CRCP
<b>Host species</b>	Rabbit
<b>Tested applications</b>	<b>Suitable for:</b> WB, IHC-P, ICC/IF, IP
<b>Species reactivity</b>	<b>Reacts with:</b> Mouse, Rat, Human
<b>Immunogen</b>	Synthetic peptide within Human CRCP aa 1-100 (N terminal). The exact sequence is proprietary. Database link: <a href="#">O75575</a>
<b>Positive control</b>	WB: HeLa and Jurkat whole cell lysate ( <a href="#">ab7899</a> ). Human prostate and ovary cancer tissue lysates. Mouse kidney and rat brain tissue lysates. IHC-P: Human ovarian carcinoma and breast tissues. ICC/IF: LnCap and HeLa cells. IP: Human prostate cancer tissue lysate.
<b>General notes</b>	<p>This product is a recombinant monoclonal antibody, which offers several advantages including:</p> <ul style="list-style-type: none"><li>- High batch-to-batch consistency and reproducibility</li><li>- Improved sensitivity and specificity</li><li>- Long-term security of supply</li><li>- Animal-free production</li></ul> <p>For more information <a href="#">see here</a>.</p> <p>Our RabMAb<sup>®</sup> technology is a patented hybridoma-based technology for making rabbit monoclonal antibodies. For details on our patents, please refer to <a href="#">RabMAb<sup>®</sup> patents</a>.</p>

### Properties

<b>Form</b>	Liquid
<b>Storage instructions</b>	Shipped at 4°C. Store at -20°C.
<b>Storage buffer</b>	Preservative: 0.01% Sodium azide Constituents: 40% Glycerol (glycerin, glycerine), 0.05% BSA, 59% PBS
<b>Purity</b>	Protein A purified
<b>Clonality</b>	Monoclonal
<b>Clone number</b>	EPR9670(B)
<b>Isotype</b>	IgG

## Applications

---

**The Abpromise guarantee** Our **Abpromise guarantee** covers the use of ab139264 in the following tested applications. The application notes include recommended starting dilutions; optimal dilutions/concentrations should be determined by the end user.

Application	Abreviews	Notes
WB		1/1000 - 1/10000. Predicted molecular weight: 14 kDa.
IHC-P		1/200. Perform heat mediated antigen retrieval with Tris/EDTA buffer pH 9.0 before commencing with IHC staining protocol. See <b><u>IHC antigen retrieval protocols</u></b> . <b>For unpurified use at 1/100.</b>
ICC/IF		1/250. <b>For unpurified use at 1/100.</b>
IP		1/50 - 1/100.

## Target

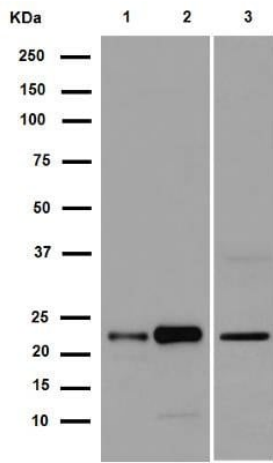
---

<b>Function</b>	DNA-dependent RNA polymerase catalyzes the transcription of DNA into RNA using the four ribonucleoside triphosphates as substrates. Specific peripheric component of RNA polymerase III which synthesizes small RNAs, such as 5S rRNA and tRNAs. Plays a key role in sensing and limiting infection by intracellular bacteria and DNA viruses. Acts as nuclear and cytosolic DNA sensor involved in innate immune response. Can sense non-self dsDNA that serves as template for transcription into dsRNA. The non-self RNA polymerase III transcripts induce type I interferon and NF- Kappa-B through the RIG-I pathway. Accessory protein for the calcitonin gene-related peptide (CGRP) receptor. It modulates CGRP responsiveness in a variety of tissues.
<b>Tissue specificity</b>	Ubiquitous. Most prevalent in testis.
<b>Sequence similarities</b>	Belongs to the eukaryotic RPC9 RNA polymerase subunit family.
<b>Cellular localization</b>	Nucleus. Cell membrane.

---

## Images

---



Western blot - Anti-CRCP antibody [EPR9670(B)]  
(ab139264)

**All lanes :** Anti-CRCP antibody [EPR9670(B)] (ab139264) at 1/5000 dilution (unpurified)

**Lane 1 :** Jurkat cell lysate

**Lane 2 :** Mouse kidney tissue lysate

**Lane 3 :** Rat brain tissue lysate

Lysates/proteins at 20 µg per lane.

**Secondary**

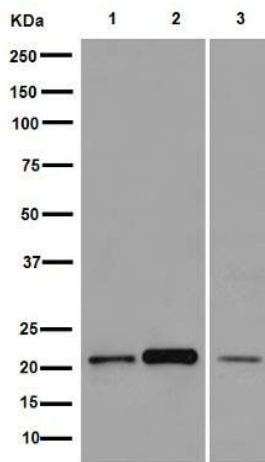
**All lanes :** Peroxidase-conjugated goat anti-rabbit IgG (H+L) at 1/1000 dilution

**Predicted band size:** 14 kDa

**Observed band size:** 20 kDa

Blocking buffer and concentration: 5% NFDm/TBST.

Diluting buffer and concentration: 5% NFDm/TBST.



Western blot - Anti-CRCP antibody [EPR9670(B)]  
(ab139264)

**All lanes :** Anti-CRCP antibody [EPR9670(B)] (ab139264) at 1/10000 dilution (purified)

**Lane 1 :** Jurkat cell lysate

**Lane 2 :** Mouse kidney tissue lysate

**Lane 3 :** Rat brain tissue lysate

Lysates/proteins at 20 µg per lane.

**Secondary**

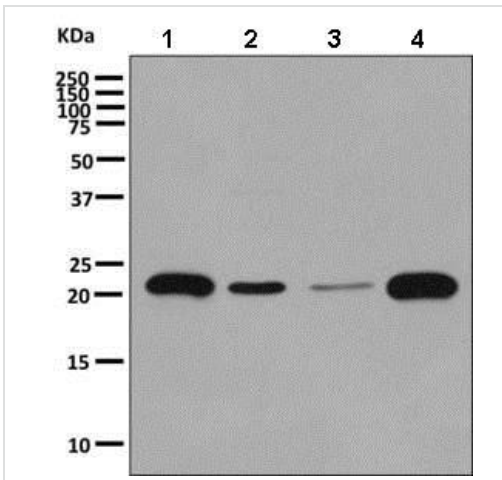
**All lanes :** Peroxidase-conjugated goat anti-rabbit IgG (H+L) at 1/1000 dilution

**Predicted band size:** 14 kDa

**Observed band size:** 20 kDa

Blocking buffer and concentration: 5% NFDm/TBST.

Diluting buffer and concentration: 5% NFDm/TBST.



Western blot - Anti-CRCP antibody [EPR9670(B)] (ab139264)

**All lanes** : Anti-CRCP antibody [EPR9670(B)] (ab139264) at 1/1000 dilution (unpurified)

**Lane 1** : Human ovary cancer lysate

**Lane 2** : HeLa lysate

**Lane 3** : Jurkat lysate

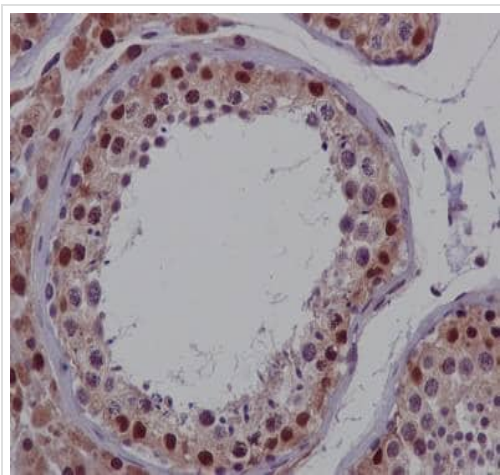
**Lane 4** : Human prostate cancer lysate

Lysates/proteins at 10 µg per lane.

### Secondary

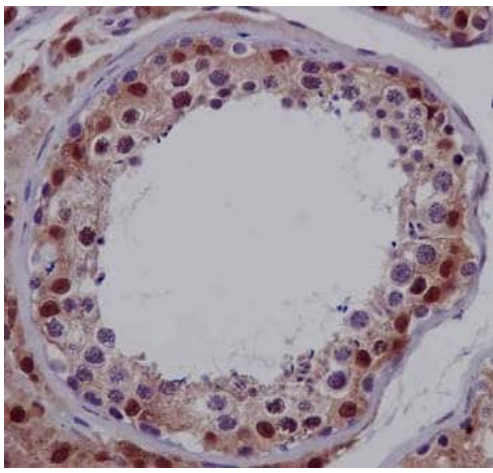
**All lanes** : HRP labelled goat anti-rabbit at 1/2000 dilution

**Predicted band size:** 14 kDa



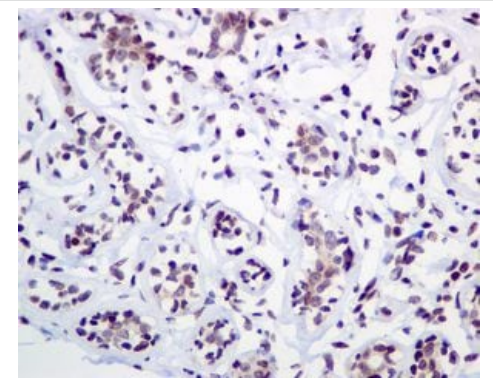
Immunohistochemistry (Formalin/PFA-fixed paraffin-embedded sections) - Anti-CRCP antibody [EPR9670(B)] (ab139264)

Immunohistochemistry (Formalin/PFA-fixed paraffin-embedded sections) analysis of human breast tissue labelling CRCP with unpurified ab139264 at 1/100. Heat mediated antigen retrieval was performed using Tris/EDTA buffer pH 9. A prediluted HRP-polymer conjugated anti-rabbit IgG was used as the secondary antibody. Counterstained with Hematoxylin.



Immunohistochemistry (Formalin/PFA-fixed paraffin-embedded sections) - Anti-CRCP antibody [EPR9670(B)] (ab139264)

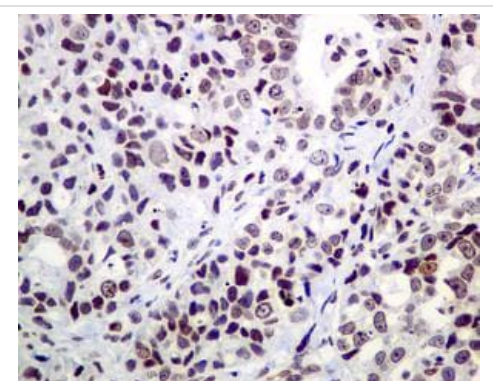
Immunohistochemistry (Formalin/PFA-fixed paraffin-embedded sections) analysis of human breast tissue labelling CRCP with purified ab139264 at 1/200. Heat mediated antigen retrieval was performed using Tris/EDTA buffer pH 9. A prediluted HRP-polymer conjugated anti-rabbit IgG was used as the secondary antibody. Counterstained with Hematoxylin.



Immunohistochemistry (Formalin/PFA-fixed paraffin-embedded sections) - Anti-CRCP antibody [EPR9670(B)] (ab139264)

Immunohistochemistry (Formalin/PFA-fixed paraffin-embedded sections) analysis of human breast tissue labelling CRCP with unpurified ab139264 at 1/50.

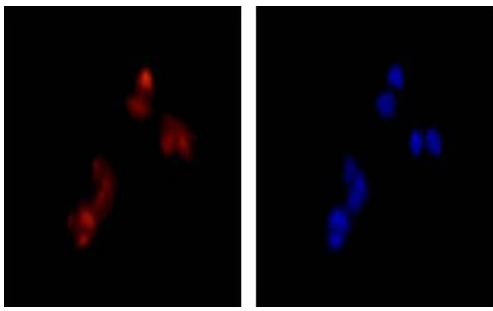
Perform heat mediated antigen retrieval with Tris/EDTA buffer pH 9.0 before commencing with IHC staining protocol.



Immunohistochemistry (Formalin/PFA-fixed paraffin-embedded sections) - Anti-CRCP antibody [EPR9670(B)] (ab139264)

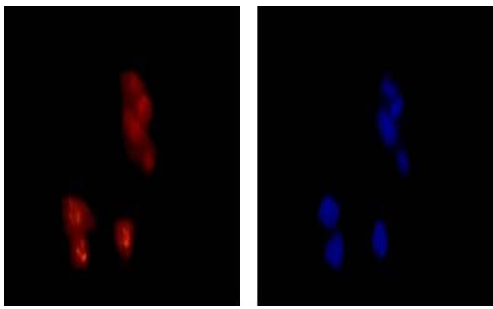
Immunohistochemistry (Formalin/PFA-fixed paraffin-embedded sections) analysis of human ovarian carcinoma tissue labelling CRCP with unpurified ab139264 at 1/50.

Perform heat mediated antigen retrieval with Tris/EDTA buffer pH 9.0 before commencing with IHC staining protocol.



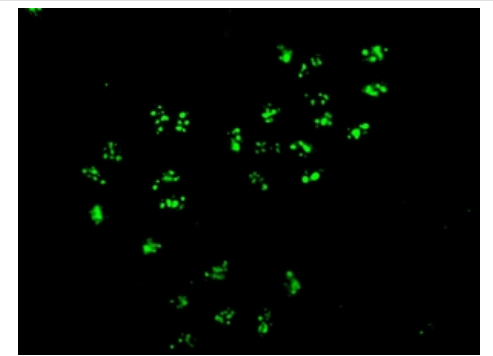
Immunocytochemistry/ Immunofluorescence - Anti-CRCP antibody [EPR9670(B)] (ab139264)

Immunocytochemistry/Immunofluorescence analysis of LnCap cells labelling CRCP (red) with unpurified ab139264 at 1/100. Cells were fixed with 4% paraformaldehyde. An Alexa Fluor<sup>®</sup> 555-conjugated goat anti-rabbit IgG (1/200) was used as the secondary antibody. Counterstained with DAPI (blue).



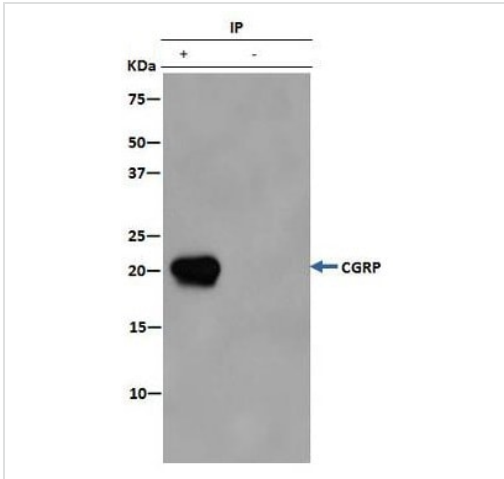
Immunocytochemistry/ Immunofluorescence - Anti-CRCP antibody [EPR9670(B)] (ab139264)

Immunocytochemistry/Immunofluorescence analysis of LnCap cells labelling CRCP (red) with purified ab139264 at 1/250. Cells were fixed with 4% paraformaldehyde. An Alexa Fluor<sup>®</sup> 555-conjugated goat anti-rabbit IgG (1/200) was used as the secondary antibody. Counterstained with DAPI (blue).



Immunocytochemistry/ Immunofluorescence - Anti-CRCP antibody [EPR9670(B)] (ab139264)

Immunocytochemistry/Immunofluorescence analysis of HeLa cells labelling CRCP with unpurified ab139264 at 1/100.

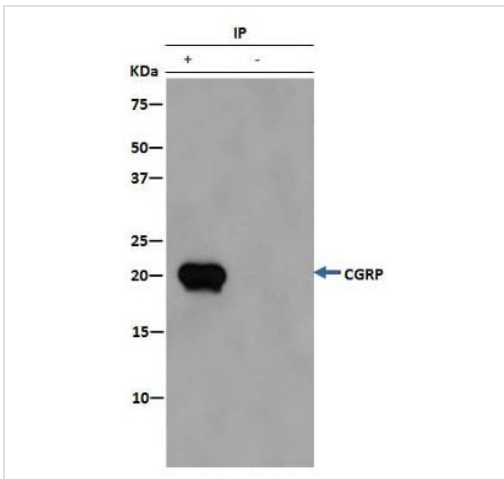


Immunoprecipitation - Anti-CRCP antibody  
[EPR9670(B)] (ab139264)

ab139264 (unpurified) at 1/50 immunoprecipitating CRCP in human prostate cancer tissue lysate (Lane 1). Lane 2 - PBS. For western blotting, a HRP-conjugated anti-rabbit IgG, specific to the non-reduced form of IgG was used as the secondary antibody (1/1500).

Blocking buffer and concentration: 5% NFDm/TBST.

Diluting buffer and concentration: 5% NFDm /TBST.




Immunoprecipitation - Anti-CRCP antibody  
[EPR9670(B)] (ab139264)

ab139264 (purified) at 1/100 immunoprecipitating CRCP in human prostate cancer tissue lysate (Lane 1). Lane 2 - PBS. For western blotting, a HRP-conjugated anti-rabbit IgG, specific to the non-reduced form of IgG was used as the secondary antibody (1/1500).

Blocking buffer and concentration: 5% NFDm/TBST.

Diluting buffer and concentration: 5% NFDm /TBST.

Why choose a recombinant antibody?



- Research with confidence**  
Consistent and reproducible results
- Long-term and scalable supply**  
Recombinant technology
- Success from the first experiment**  
Confirmed specificity
- Ethical standards compliant**  
Animal-free production

Anti-CRCP antibody [EPR9670(B)] (ab139264)

**Please note:** All products are "FOR RESEARCH USE ONLY. NOT FOR USE IN DIAGNOSTIC PROCEDURES"

### Our Abpromise to you: Quality guaranteed and expert technical support

---

- Replacement or refund for products not performing as stated on the datasheet
- Valid for 12 months from date of delivery
- Response to your inquiry within 24 hours
- We provide support in Chinese, English, French, German, Japanese and Spanish
- Extensive multi-media technical resources to help you
- We investigate all quality concerns to ensure our products perform to the highest standards

If the product does not perform as described on this datasheet, we will offer a refund or replacement. For full details of the Abpromise, please visit <https://www.abcam.com/abpromise> or contact our technical team.

### Terms and conditions

---

- Guarantee only valid for products bought direct from Abcam or one of our authorized distributors