


## Product datasheet

### Anti-Creatine kinase B type antibody ab151579

★★★★★ [1 Abreviews](#) [2 References](#) [5 Images](#)

#### Overview

<b>Product name</b>	Anti-Creatine kinase B type antibody
<b>Description</b>	Rabbit polyclonal to Creatine kinase B type
<b>Host species</b>	Rabbit
<b>Tested applications</b>	<b>Suitable for:</b> WB, IHC-P, ICC/IF
<b>Species reactivity</b>	<b>Reacts with:</b> Mouse, Human <b>Predicted to work with:</b> Rat, Chicken, Cow, Pig, Xenopus tropicalis 
<b>Immunogen</b>	Recombinant fragment, corresponding to a region within amino acids 16-209 of Human Creatine kinase B type
<b>Positive control</b>	NIH-3T3 and H1299 cell lysates; 293T, HeLaS3, HepG2 cell lines; HeLa cells.
<b>General notes</b>	<p>The Life Science industry has been in the grips of a reproducibility crisis for a number of years. Abcam is leading the way in addressing this with our range of recombinant monoclonal antibodies and knockout edited cell lines for gold-standard validation. Please check that this product meets your needs before purchasing.</p> <p>If you have any questions, special requirements or concerns, please send us an inquiry and/or contact our Support team ahead of purchase. Recommended alternatives for this product can be found below, along with publications, customer reviews and Q&amp;As</p>

#### Properties

<b>Form</b>	Liquid
<b>Storage instructions</b>	Shipped at 4°C. Upon delivery aliquot. Store at -20°C or -80°C. Avoid freeze / thaw cycle.
<b>Storage buffer</b>	pH: 7.00 Preservative: 0.01% Thimerosal (merthiolate) Constituents: 79.99% PBS, 20% Glycerol (glycerin, glycerine)
<b>Purity</b>	Protein A purified
<b>Clonality</b>	Polyclonal
<b>Isotype</b>	IgG

#### Applications

## The Abpromise guarantee

Our **Abpromise guarantee** covers the use of ab151579 in the following tested applications.

The application notes include recommended starting dilutions; optimal dilutions/concentrations should be determined by the end user.

Application	Abreviews	Notes
WB	★★★★★ (1)	1/500 - 1/3000. Predicted molecular weight: 43 kDa.
IHC-P		1/100 - 1/1000. Perform heat mediated antigen retrieval with citrate buffer pH 6 before commencing with IHC staining protocol.
ICC/IF		1/100 - 1/1000.

## Target

### Function

Reversibly catalyzes the transfer of phosphate between ATP and various phosphagens (e.g. creatine phosphate). Creatine kinase isoenzymes play a central role in energy transduction in tissues with large, fluctuating energy demands, such as skeletal muscle, heart, brain and spermatozoa.

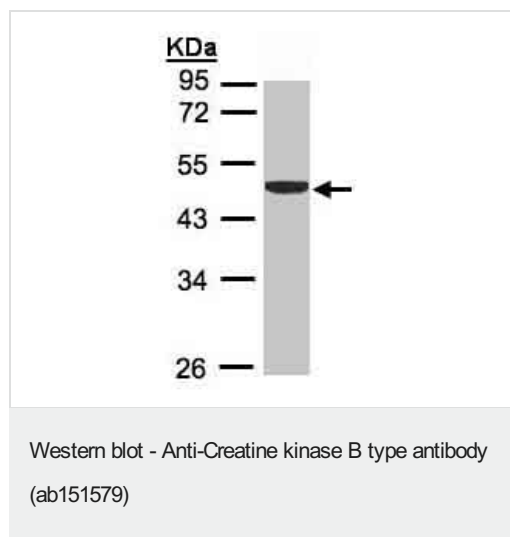
### Sequence similarities

Belongs to the ATP:guanido phosphotransferase family.  
Contains 1 phosphagen kinase C-terminal domain.  
Contains 1 phosphagen kinase N-terminal domain.

### Cellular localization

Cytoplasm.

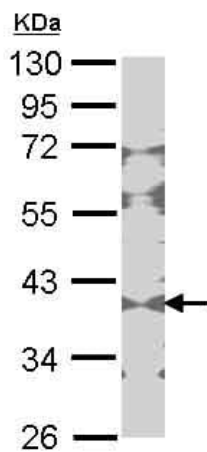
## Images



Anti-Creatine kinase B type antibody (ab151579) at 1/1000 dilution  
+ H1299 cell lysate at 30 µg

**Predicted band size:** 43 kDa

10% SDS PAGE

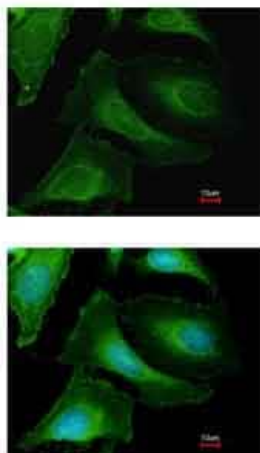


Western blot - Anti-Creatine kinase B type antibody (ab151579)

Anti-Creatine kinase B type antibody (ab151579) at 1/1000 dilution  
+ NIH-3T3 cell lysate at 30 µg

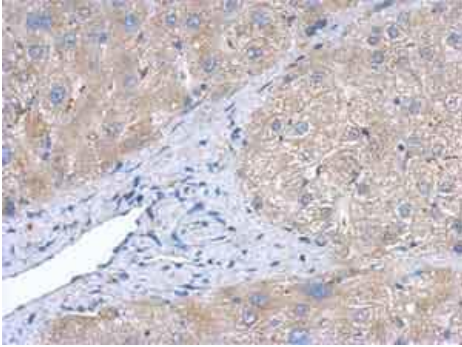
**Predicted band size:** 43 kDa

10% SDS PAGE



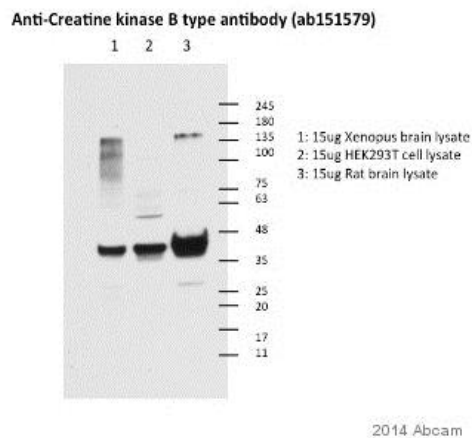
Immunocytochemistry/ Immunofluorescence - Anti-Creatine kinase B type antibody (ab151579)

Immunofluorescence analysis of methanol-fixed HeLa cells, labeling Creatine kinase B with ab151579 at 1/200 dilution.



Immunohistochemistry (Formalin/PFA-fixed paraffin-embedded sections) - Anti-Creatine kinase B type antibody (ab151579)

Immunohistochemical analysis of paraffin-embedded human hepatoma tissue, labeling Creatine kinase B with ab151579 at 1/500 dilution.



Western blot - Anti-Creatine kinase B type antibody (ab151579)

This image is courtesy of an anonymous Abreview

**All lanes** : Anti-Creatine kinase B type antibody (ab151579) at 1/1000 dilution

**Lane 1** : Xenopus laevis brain tissue lysate - whole

**Lane 2** : HEK293 cell lysate

**Lane 3** : Rat brain tissue lysate - whole

Lysates/proteins at 15 µg per lane.

### Secondary

**All lanes** : HRP-conjugated goat anti-rabbit IgG (H+L) polyclonal at 1/1000 dilution

Developed using the ECL technique.

Performed under reducing conditions.

**Predicted band size:** 43 kDa

**Observed band size:** 43 kDa

**Additional bands at:** 75-135 kDa (possible non-specific binding)

**Exposure time:** 30 seconds

**Please note:** All products are "FOR RESEARCH USE ONLY. NOT FOR USE IN DIAGNOSTIC PROCEDURES"

### **Our Abpromise to you: Quality guaranteed and expert technical support**

---

- Replacement or refund for products not performing as stated on the datasheet
- Valid for 12 months from date of delivery
- Response to your inquiry within 24 hours
  
- We provide support in Chinese, English, French, German, Japanese and Spanish
- Extensive multi-media technical resources to help you
- We investigate all quality concerns to ensure our products perform to the highest standards

If the product does not perform as described on this datasheet, we will offer a refund or replacement. For full details of the Abpromise, please visit <https://www.abcam.com/abpromise> or contact our technical team.

### **Terms and conditions**

---

- Guarantee only valid for products bought direct from Abcam or one of our authorized distributors