




## Product datasheet

# Anti-Creatine Kinase MM antibody ab231200

5 Images

### Overview

---

<b>Product name</b>	Anti-Creatine Kinase MM antibody
<b>Description</b>	Rabbit polyclonal to Creatine Kinase MM
<b>Host species</b>	Rabbit
<b>Tested applications</b>	<b>Suitable for:</b> WB
<b>Species reactivity</b>	<b>Reacts with:</b> Mouse, Dog <b>Predicted to work with:</b> Rat, Rabbit, Chicken, Cow, Human, Pig 
<b>Immunogen</b>	Recombinant fragment (His-tag) corresponding to Dog Creatine Kinase MM aa 1 to the C-terminus. Expressed in E.coli. N-terminal tag. Database link: <a href="#">P05123</a>  <a href="#">Run BLAST with</a>  <a href="#">Run BLAST with</a>
<b>Positive control</b>	WB: Mouse brain and heart lysate. Canine brain and heart lysate. Recombinant canine Creatine Kinase MM protein.
<b>General notes</b>	<p>The Life Science industry has been in the grips of a reproducibility crisis for a number of years. Abcam is leading the way in addressing this with our range of recombinant monoclonal antibodies and knockout edited cell lines for gold-standard validation. Please check that this product meets your needs before purchasing.</p> <p>If you have any questions, special requirements or concerns, please send us an inquiry and/or contact our Support team ahead of purchase. Recommended alternatives for this product can be found below, along with publications, customer reviews and Q&amp;As</p>

### Properties

---

<b>Form</b>	Liquid
<b>Storage instructions</b>	Shipped at 4°C. Store at +4°C short term (1-2 weeks). Upon delivery aliquot. Store at -20°C long term. Avoid freeze / thaw cycle.
<b>Storage buffer</b>	pH: 7.40 Preservative: 0.011% Proclin 300 Constituents: 55.77% Glycerol (glycerin, glycerine), 44.219% PBS
<b>Purity</b>	Immunogen affinity purified
<b>Purification notes</b>	Followed by Protein A affinity chromatography.
<b>Clonality</b>	Polyclonal

Isotype

IgG

## Applications

### The Abpromise guarantee

Our **Abpromise guarantee** covers the use of ab231200 in the following tested applications.

The application notes include recommended starting dilutions; optimal dilutions/concentrations should be determined by the end user.

Application	Abreviews	Notes
WB		Use a concentration of 0.2 - 2 µg/ml.

## Target

### Function

Reversibly catalyzes the transfer of phosphate between ATP and various phosphagens (e.g. creatine phosphate). Creatine kinase isoenzymes play a central role in energy transduction in tissues with large, fluctuating energy demands, such as skeletal muscle, heart, brain and spermatozoa.

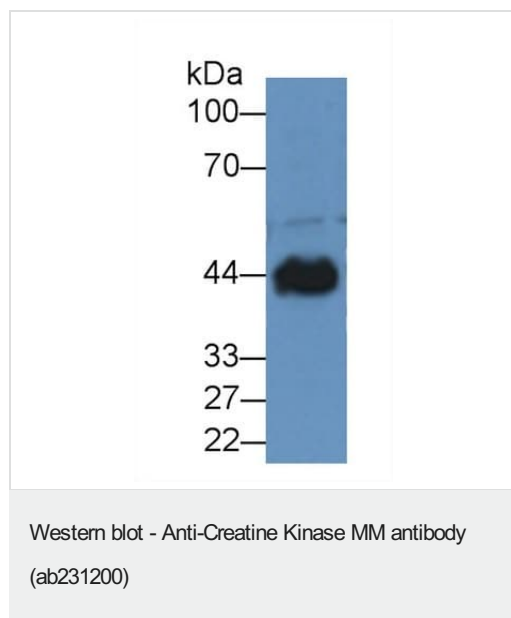
### Sequence similarities

Belongs to the ATP:guanido phosphotransferase family.  
Contains 1 phosphagen kinase C-terminal domain.  
Contains 1 phosphagen kinase N-terminal domain.

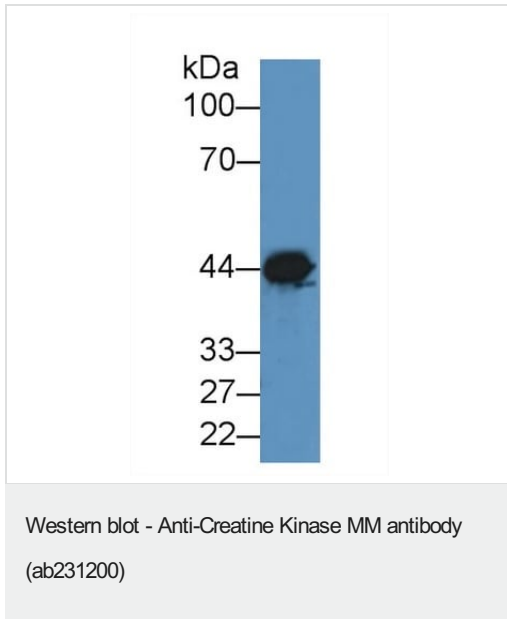
### Cellular localization

Cytoplasm.

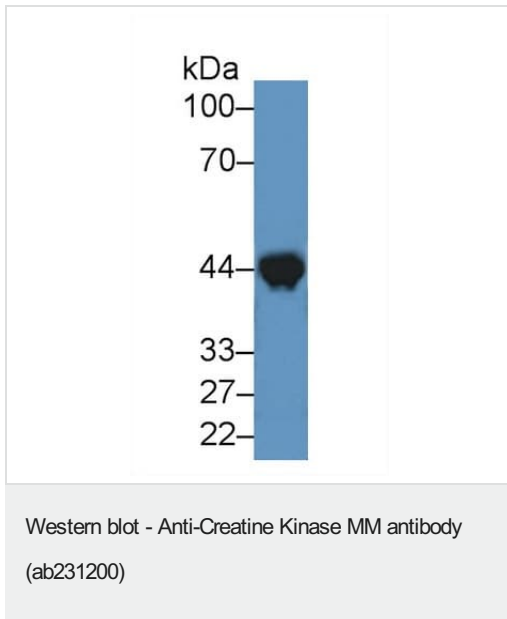
## Images



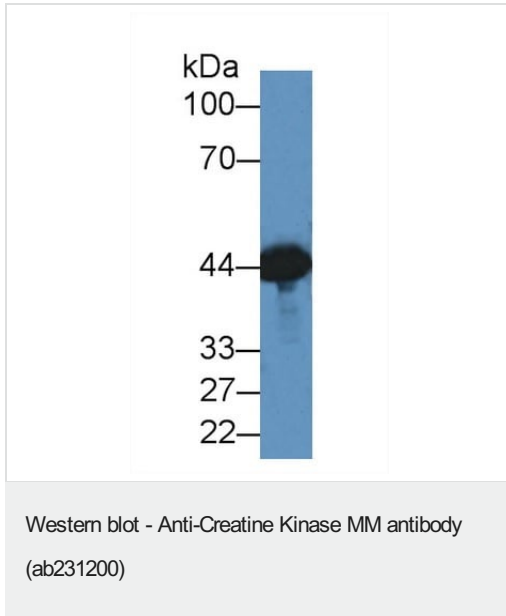
Anti-Creatine Kinase MM antibody (ab231200) at 2 µg/ml + Canine heart lysate



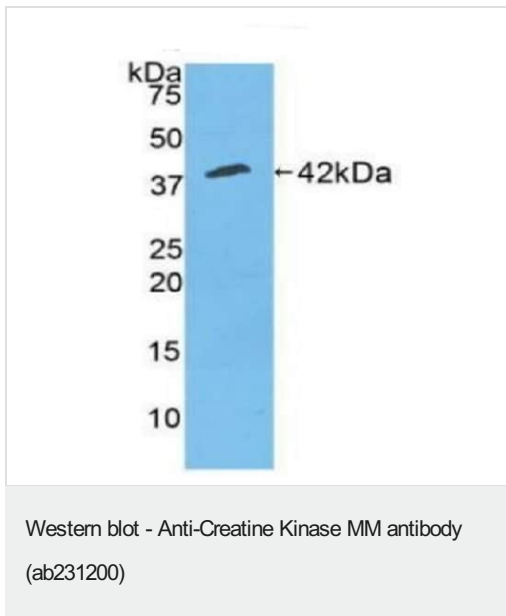
Anti-Creatine Kinase MM antibody (ab231200) at 2  $\mu$ g/ml + Canine brain lysate



Anti-Creatine Kinase MM antibody (ab231200) at 2  $\mu$ g/ml + Mouse heart lysate



Anti-Creatine Kinase MM antibody (ab231200) at 2  $\mu$ g/ml + Mouse brain lysate



Anti-Creatine Kinase MM antibody (ab231200) at 2  $\mu$ g/ml + Recombinant canine Creatine Kinase MM protein

**Please note:** All products are "FOR RESEARCH USE ONLY. NOT FOR USE IN DIAGNOSTIC PROCEDURES"

**Our Abpromise to you: Quality guaranteed and expert technical support**

- Replacement or refund for products not performing as stated on the datasheet
- Valid for 12 months from date of delivery
- Response to your inquiry within 24 hours
  
- We provide support in Chinese, English, French, German, Japanese and Spanish
- Extensive multi-media technical resources to help you
- We investigate all quality concerns to ensure our products perform to the highest standards

If the product does not perform as described on this datasheet, we will offer a refund or replacement. For full details of the Abpromise, please visit <https://www.abcam.com/abpromise> or contact our technical team.

### **Terms and conditions**

---

- Guarantee only valid for products bought direct from Abcam or one of our authorized distributors