




## Product datasheet

# Anti-Creatine Kinase MM antibody - N-terminal ab174635

[1 Image](#)

### Overview

<b>Product name</b>	Anti-Creatine Kinase MM antibody - N-terminal
<b>Description</b>	Goat polyclonal to Creatine Kinase MM - N-terminal
<b>Host species</b>	Goat
<b>Tested applications</b>	<b>Suitable for:</b> IHC-P, WB
<b>Species reactivity</b>	<b>Reacts with:</b> Mouse, Human <b>Predicted to work with:</b> Rat, Rabbit, Dog 
<b>Immunogen</b>	Synthetic peptide corresponding to Human Creatine Kinase MM aa 5-18 (N terminal) (Cysteine residue). Sequence: NTHNKFKLNYKPEE-C  Database link: <a href="#">P06732</a> <div>  <a href="#">Run BLAST with</a>  <a href="#">Run BLAST with</a> </div>
<b>Positive control</b>	WB: Human and mouse skeletal muscle lysate, Human and mouse Heart lysate IHC-P: Human Heart tissue.
<b>General notes</b>	<p>The Life Science industry has been in the grips of a reproducibility crisis for a number of years. Abcam is leading the way in addressing this with our range of recombinant monoclonal antibodies and knockout edited cell lines for gold-standard validation. Please check that this product meets your needs before purchasing.</p> <p>If you have any questions, special requirements or concerns, please send us an inquiry and/or contact our Support team ahead of purchase. Recommended alternatives for this product can be found below, along with publications, customer reviews and Q&amp;As</p>

### Properties

<b>Form</b>	Liquid
<b>Storage instructions</b>	Shipped at 4°C. Store at +4°C short term (1-2 weeks). Upon delivery aliquot. Store at -20°C long term. Avoid freeze / thaw cycle.
<b>Storage buffer</b>	pH: 7.30 Preservative: 0.02% Sodium azide

	Constituents: 99% Tris buffered saline, 0.5% BSA
<b>Purity</b>	Immunogen affinity purified
<b>Clonality</b>	Polyclonal
<b>Isotype</b>	IgG

## Applications

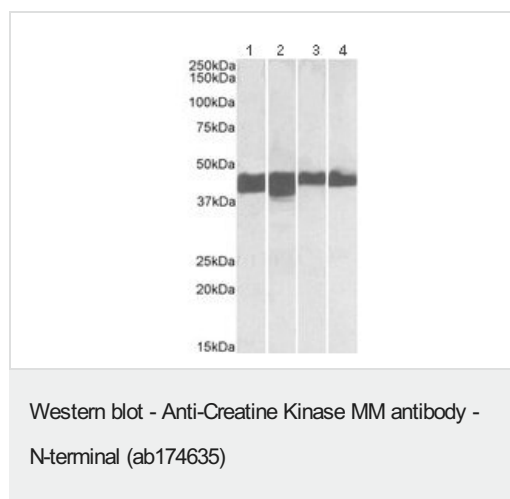
**The Abpromise guarantee** Our **Abpromise guarantee** covers the use of ab174635 in the following tested applications. The application notes include recommended starting dilutions; optimal dilutions/concentrations should be determined by the end user.

Application	Abreviews	Notes
<b>IHC-P</b>		Use a concentration of 5 µg/ml.
<b>WB</b>		Use a concentration of 0.01 - 0.03 µg/ml. Detects a band of approximately 45 kDa (predicted molecular weight: 43 kDa). 1 hour primary incubation is recommended for this product.

## Target

<b>Function</b>	Reversibly catalyzes the transfer of phosphate between ATP and various phosphogens (e.g. creatine phosphate). Creatine kinase isoenzymes play a central role in energy transduction in tissues with large, fluctuating energy demands, such as skeletal muscle, heart, brain and spermatozoa.
<b>Sequence similarities</b>	Belongs to the ATP:guanido phosphotransferase family. Contains 1 phosphagen kinase C-terminal domain. Contains 1 phosphagen kinase N-terminal domain.
<b>Cellular localization</b>	Cytoplasm.

## Images



**All lanes** : Anti-Creatine Kinase MM antibody - N-terminal (ab174635) at 0.00999999977648258 µg

**Lane 1** : Human Skeletal Muscle tissue lysate

**Lane 2** : Mouse Skeletal Muscle tissue lysate

**Lane 3** : Human heart tissue lysate

**Lane 4** : Mouse heart tissue lysate

Lysates/proteins at 35 µg per lane.

**Predicted band size:** 43 kDa

**Please note:** All products are "FOR RESEARCH USE ONLY. NOT FOR USE IN DIAGNOSTIC PROCEDURES"

### **Our Abpromise to you: Quality guaranteed and expert technical support**

---

- Replacement or refund for products not performing as stated on the datasheet
- Valid for 12 months from date of delivery
- Response to your inquiry within 24 hours
  
- We provide support in Chinese, English, French, German, Japanese and Spanish
- Extensive multi-media technical resources to help you
- We investigate all quality concerns to ensure our products perform to the highest standards

If the product does not perform as described on this datasheet, we will offer a refund or replacement. For full details of the Abpromise, please visit <https://www.abcam.com/abpromise> or contact our technical team.

### **Terms and conditions**

---

- Guarantee only valid for products bought direct from Abcam or one of our authorized distributors