




Product datasheet

Anti-Creatine Kinase MM antibody - N-terminal ab195664

[2 Images](#)

Overview

Product name	Anti-Creatine Kinase MM antibody - N-terminal
Description	Goat polyclonal to Creatine Kinase MM - N-terminal
Host species	Goat
Tested applications	Suitable for: IHC-P, WB
Species reactivity	Reacts with: Mouse, Human Predicted to work with: Rat, Rabbit, Horse, Guinea pig, Hamster, Dog 
Immunogen	Synthetic peptide corresponding to Human Creatine Kinase MM aa 1-100 (N terminal) (Cysteine residue). Database link: P06732 <div>  Run BLAST with  Run BLAST with </div>
Positive control	Human heart tissue. Human and mouse skeletal muscle lysate. Human and mouse heart lysate.
General notes	<p>The Life Science industry has been in the grips of a reproducibility crisis for a number of years. Abcam is leading the way in addressing this with our range of recombinant monoclonal antibodies and knockout edited cell lines for gold-standard validation. Please check that this product meets your needs before purchasing.</p> <p>If you have any questions, special requirements or concerns, please send us an inquiry and/or contact our Support team ahead of purchase. Recommended alternatives for this product can be found below, along with publications, customer reviews and Q&As</p>

Properties

Form	Liquid
Storage instructions	Shipped at 4°C. Store at +4°C short term (1-2 weeks). Upon delivery aliquot. Store at -20°C long term. Avoid freeze / thaw cycle.
Storage buffer	pH: 7.30 Preservative: 0.02% Sodium azide Constituents: 0.5% BSA, 99% Tris buffered saline
Purity	Immunogen affinity purified
Clonality	Polyclonal

Isotype

IgG

Applications

The Abpromise guarantee

Our **Abpromise guarantee** covers the use of ab195664 in the following tested applications.

The application notes include recommended starting dilutions; optimal dilutions/concentrations should be determined by the end user.

Application	Abreviews	Notes
IHC-P		Use a concentration of 5 µg/ml.
WB		Use a concentration of 0.01 - 0.03 µg/ml. Predicted molecular weight: 43 kDa.

Target

Function

Reversibly catalyzes the transfer of phosphate between ATP and various phosphogens (e.g. creatine phosphate). Creatine kinase isoenzymes play a central role in energy transduction in tissues with large, fluctuating energy demands, such as skeletal muscle, heart, brain and spermatozoa.

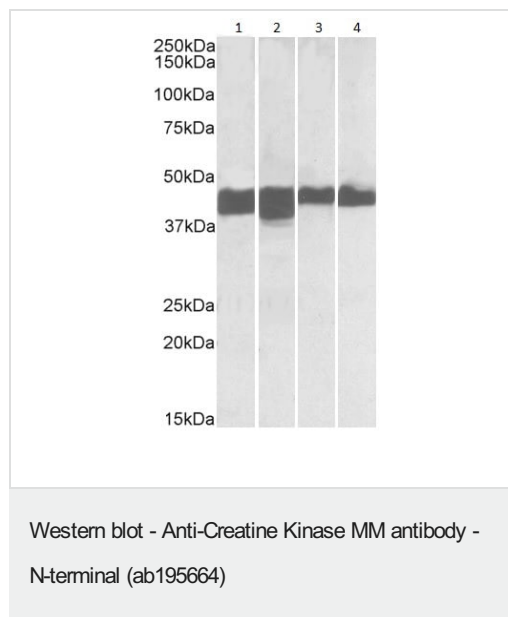
Sequence similarities

Belongs to the ATP:guanido phosphotransferase family.
Contains 1 phosphagen kinase C-terminal domain.
Contains 1 phosphagen kinase N-terminal domain.

Cellular localization

Cytoplasm.

Images



All lanes : Anti-Creatine Kinase MM antibody - N-terminal (ab195664) at 0.01 µg/ml

Lane 1 : Human skeletal muscle lysate

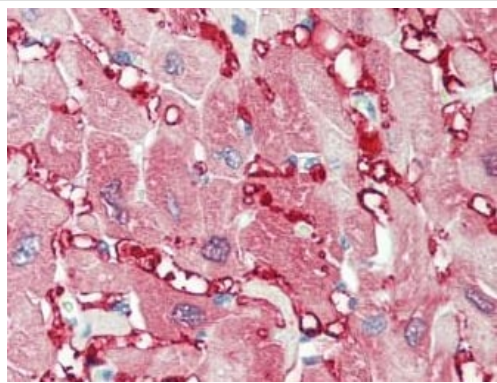
Lane 2 : Mouse skeletal muscle lysate

Lane 3 : Human heart lysate

Lane 4 : Mouse heart lysate

Lysates/proteins at 35 µg per lane.

Predicted band size: 43 kDa



Immunohistochemistry (Formalin/PFA-fixed paraffin-embedded sections) - Anti-Creatine Kinase MM antibody - N-terminal (ab195664)

Immunohistochemical analysis of formalin/PFA-fixed paraffin-embedded human heart sections labeling Creatine Kinase MM with ab195664 at 5 µg/mL.

Please note: All products are "FOR RESEARCH USE ONLY. NOT FOR USE IN DIAGNOSTIC PROCEDURES"

Our Abpromise to you: Quality guaranteed and expert technical support

- Replacement or refund for products not performing as stated on the datasheet
- Valid for 12 months from date of delivery
- Response to your inquiry within 24 hours
- We provide support in Chinese, English, French, German, Japanese and Spanish
- Extensive multi-media technical resources to help you
- We investigate all quality concerns to ensure our products perform to the highest standards

If the product does not perform as described on this datasheet, we will offer a refund or replacement. For full details of the Abpromise, please visit <https://www.abcam.com/abpromise> or contact our technical team.

Terms and conditions

- Guarantee only valid for products bought direct from Abcam or one of our authorized distributors