

Product datasheet

Anti-CREB3 antibody [EPR14215(B)] ab180119

Recombinant RabMAb

[3 References](#) [5 Images](#)

Overview

| | |
|----------------------------|--|
| Product name | Anti-CREB3 antibody [EPR14215(B)] |
| Description | Rabbit monoclonal [EPR14215(B)] to CREB3 |
| Host species | Rabbit |
| Tested applications | Suitable for: Flow Cyt (Intra), ICC/IF, WB |
| Species reactivity | Reacts with: Human |
| Immunogen | Synthetic peptide within Human CREB3 aa 50-150. The exact sequence is proprietary. Database link: O43889 |
| Positive control | HeLa and 293 cells; HeLa, HepG2 and 293 cell lysates. |
| General notes | This product is a recombinant monoclonal antibody, which offers several advantages including: <ul style="list-style-type: none"> - High batch-to-batch consistency and reproducibility - Improved sensitivity and specificity - Long-term security of supply - Animal-free production For more information see here . Our RabMAb [®] technology is a patented hybridoma-based technology for making rabbit monoclonal antibodies. For details on our patents, please refer to RabMAb[®] patents . |

Properties

| | |
|-----------------------------|---|
| Form | Liquid |
| Storage instructions | Shipped at 4°C. Store at +4°C short term (1-2 weeks). Upon delivery aliquot. Store at -20°C long term. Avoid freeze / thaw cycle. |
| Storage buffer | Preservative: 0.01% Sodium azide Constituents: PBS, 40% Glycerol (glycerin, glycerine), 0.05% BSA |
| Purity | Protein A purified |
| Clonality | Monoclonal |
| Clone number | EPR14215(B) |
| Isotype | IgG |

Applications

The Abpromise guarantee

Our **Abpromise guarantee** covers the use of ab180119 in the following tested applications.

The application notes include recommended starting dilutions; optimal dilutions/concentrations should be determined by the end user.

| Application | Abreviews | Notes |
|------------------|-----------|--|
| Flow Cyt (Intra) | | 1/100. ab172730 - Rabbit monoclonal IgG, is suitable for use as an isotype control with this antibody. |
| ICC/IF | | 1/100. |
| WB | | 1/2000 - 1/10000. Detects a band of approximately 40 kDa (predicted molecular weight: 44 kDa). |

Target

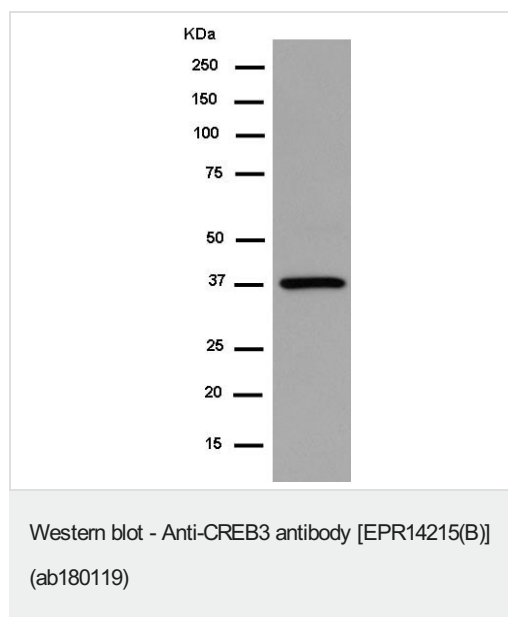
Relevance

This gene encodes a transcription factor that is a member of the leucine zipper family of DNA binding proteins. This protein binds to the cAMP-responsive element, an octameric palindrome. The protein interacts with host cell factor C1, which also associates with the herpes simplex virus (HSV) protein VP16 that induces transcription of HSV immediate-early genes. This protein and VP16 both bind to the same site on host cell factor C1. It is thought that the interaction between this protein and host cell factor C1 plays a role in the establishment of latency during HSV infection. An additional transcript variant has been identified, but its biological validity has not been determined.

Cellular localization

Isoform 2: Endoplasmic reticulum membrane; Single-pass type II membrane protein. Membrane.
Isoform 3: Nucleus. Cytoplasm.

Images



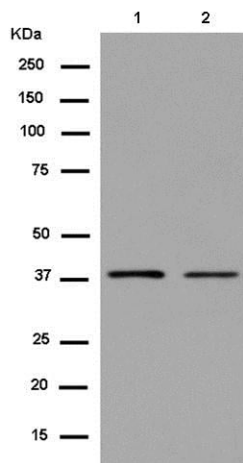
Anti-CREB3 antibody [EPR14215(B)] (ab180119) at 1/2000 dilution + HeLa cell lysate at 20 µg

Secondary

Goat Anti-Rabbit IgG, (H+L), Peroxidase conjugated at 1/1000 dilution

Predicted band size: 44 kDa

Observed band size: 40 kDa



Western blot - Anti-CREB3 antibody [EPR14215(B)] (ab180119)

All lanes : Anti-CREB3 antibody [EPR14215(B)] (ab180119) at 1/10000 dilution

Lane 1 : HepG2 cell lysate

Lane 2 : 293 cell lysate

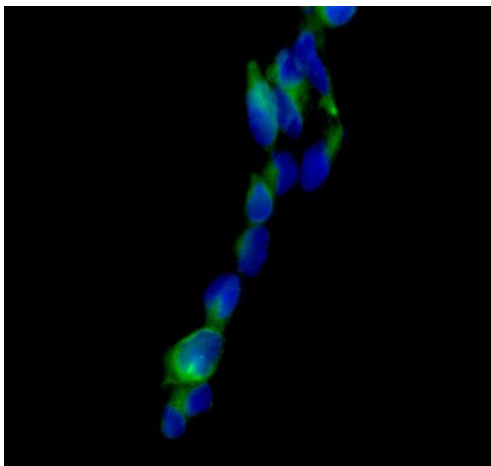
Lysates/proteins at 20 µg per lane.

Secondary

All lanes : Goat Anti-Rabbit IgG, (H+L), Peroxidase conjugated at 1/1000 dilution

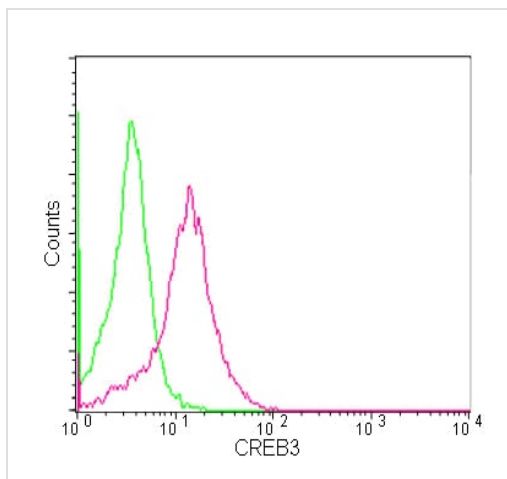
Predicted band size: 44 kDa

Observed band size: 40 kDa



Immunocytochemistry/ Immunofluorescence - Anti-CREB3 antibody [EPR14215(B)] (ab180119)





Immunofluorescent analysis of 4% paraformaldehyde-fixed 293 cells labeling CREB3 with ab180119 at 1/100 dilution. Counterstained with DAPI (blue).



Intracellular flow cytometric analysis of 2% paraformaldehyde-fixed HeLa cells labeling CREB3 with ab180119 at 1/100 dilution (red) compared to a rabbit IgG control (green), followed by secondary Goat anti rabbit IgG (FITC) at 1/75 dilution.

Flow Cytometry (Intracellular) - Anti-CREB3 antibody [EPR14215(B)] (ab180119)

Why choose a recombinant antibody?

| | |
|--|--|
|  <p>Research with confidence Consistent and reproducible results</p> |  <p>Long-term and scalable supply Recombinant technology</p> |
|  <p>Success from the first experiment Confirmed specificity</p> |  <p>Ethical standards compliant Animal-free production</p> |

Anti-CREB3 antibody [EPR14215(B)] (ab180119)

Please note: All products are "FOR RESEARCH USE ONLY. NOT FOR USE IN DIAGNOSTIC PROCEDURES"

Our Abpromise to you: Quality guaranteed and expert technical support

- Replacement or refund for products not performing as stated on the datasheet
- Valid for 12 months from date of delivery
- Response to your inquiry within 24 hours
- We provide support in Chinese, English, French, German, Japanese and Spanish
- Extensive multi-media technical resources to help you
- We investigate all quality concerns to ensure our products perform to the highest standards

If the product does not perform as described on this datasheet, we will offer a refund or replacement. For full details of the Abpromise, please visit <https://www.abcam.com/abpromise> or contact our technical team.

Terms and conditions

- Guarantee only valid for products bought direct from Abcam or one of our authorized distributors