

Product datasheet

Anti-CREBBP + KAT3B / p300 antibody [EPR23495-276] ab275379

Recombinant RabMAb

★ ★ ★ ★ ★ [1 Abreviews](#) [1 References](#) [10 Images](#)

Overview

Product name	Anti-CREBBP + KAT3B / p300 antibody [EPR23495-276]
Description	Rabbit monoclonal [EPR23495-276] to CREBBP + KAT3B / p300
Host species	Rabbit
Tested applications	Suitable for: WB, Flow Cyt (Intra), ICC/IF, IHC-P Unsuitable for: ChIP or IP
Species reactivity	Reacts with: Mouse, Rat, Human
Immunogen	Recombinant fragment. This information is proprietary to Abcam and/or its suppliers.
Positive control	WB: HeLa, K-562, RAW264.7 and PC-12 whole cell lysates; His-tagged human KAT3B/p300 recombinant protein; His-tagged human CREBBP recombinant protein. IHC-P: Human kidney, colon, clear cell renal carcinoma and hepatocellular carcinoma tissue. ICC/IF: HeLa cells. Flow Cyt (intra): HeLa cells.
General notes	<p>This product is a recombinant monoclonal antibody, which offers several advantages including:</p> <ul style="list-style-type: none"> - High batch-to-batch consistency and reproducibility - Improved sensitivity and specificity - Long-term security of supply - Animal-free production <p>For more information see here.</p> <p>Our RabMAb[®] technology is a patented hybridoma-based technology for making rabbit monoclonal antibodies. For details on our patents, please refer to RabMAb[®] patents.</p>

Properties

Form	Liquid
Storage instructions	Shipped at 4°C. Store at +4°C short term (1-2 weeks). Upon delivery aliquot. Store at -20°C long term. Avoid freeze / thaw cycle.
Storage buffer	Preservative: 0.01% Sodium azide Constituents: 59.94% PBS, 40% Glycerol, 0.05% BSA
Purity	Protein A purified

Clonality	Monoclonal
Clone number	EPR23495-276
Isotype	IgG

Applications

The Abpromise guarantee Our **Abpromise guarantee** covers the use of ab275379 in the following tested applications. The application notes include recommended starting dilutions; optimal dilutions/concentrations should be determined by the end user.

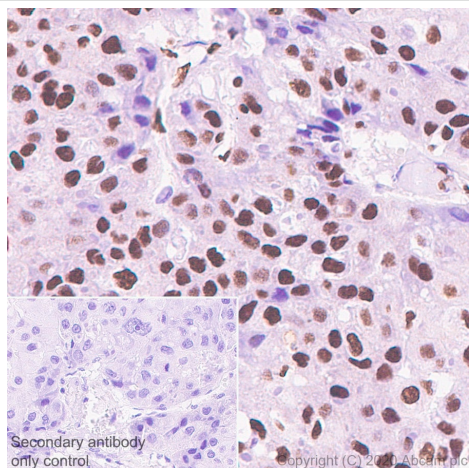
Application	Abreviews	Notes
WB	★☆☆☆☆ (1)	1/1000. Detects a band of approximately 300 kDa.
Flow Cyt (Intra)		1/500.
ICC/IF		1/100.
IHC-P		1/5000. Perform heat mediated antigen retrieval with citrate buffer pH 6 before commencing with IHC staining protocol.

Application notes Is unsuitable for ChIP or IP.

Target

Cellular localization CREBBP: Cytoplasm. Nucleus. Recruited to nuclear bodies by SS18L1/CREST. In the presence of ALX1 relocalizes from the cytoplasm to the nucleus. KAT3B / p300: Cytoplasm. Nucleus. In the presence of ALX1 relocalizes from the cytoplasm to the nucleus. Colocalizes with ROCK2 in the nucleus.

Images

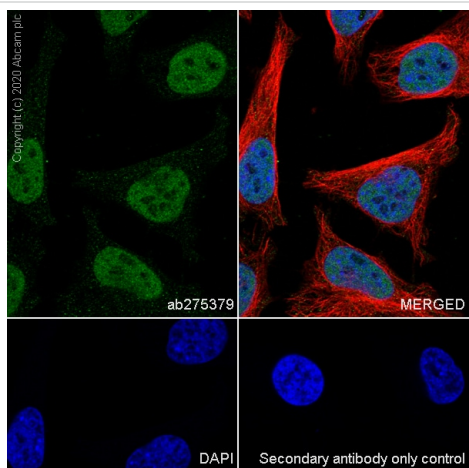


Immunohistochemistry (Formalin/PFA-fixed paraffin-embedded sections) - Anti-CREBBP + KAT3B / p300 antibody [EPR23495-276] (ab275379)

Immunohistochemical analysis of paraffin-embedded Human hepatocellular carcinoma tissue labeling KAT3B/p300+CREBBP with ab275379 at 1/5000 (0.093 ug/ml) dilution followed by a ready to use Rabbit specific IHC polymer detection kit HRP/DAB (**ab209101**). Nuclear staining on human hepatocellular carcinoma (PMID: 32144235) is observed. The section was incubated with ab275379 for 10 mins at room temperature. The immunostaining was performed on a Leica Biosystems BOND® RX instrument. Counterstained with Hematoxylin.

Secondary antibody only control: Secondary antibody is a ready to use Rabbit specific IHC polymer detection kit HRP/DAB (**ab209101**).

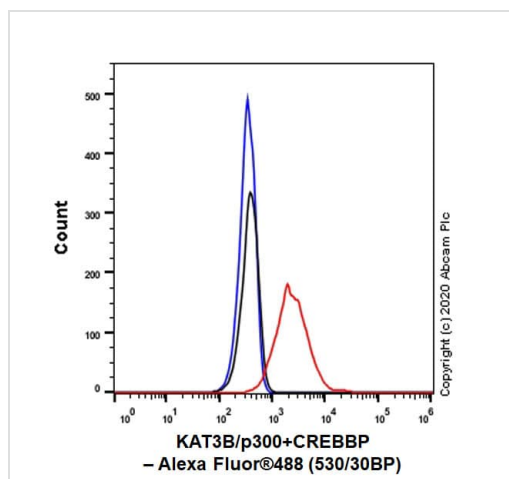
Heat mediated antigen retrieval with Citrate buffer (pH 6.0, epitope retrieval solution 1) for 20 mins.



Immunocytochemistry/ Immunofluorescence - Anti-CREBBP + KAT3B / p300 antibody [EPR23495-276] (ab275379)

Immunofluorescent analysis of 4% Paraformaldehyde-fixed, 0.1% Triton X-100 permeabilized HeLa cells labelling KAT3B/p300+CREBBP with ab275379 at 1/100 (4.67 ug/ml) dilution, followed by **ab150077** Goat Anti-Rabbit IgG H&L (Alexa Fluor® 488) antibody at 1/1000 dilution (Green). Confocal image showing nuclear and weakly cytoplasmic staining in HeLa cell line. **ab195889** Anti-alpha Tubulin mouse monoclonal antibody - Microtubule Marker (Alexa Fluor® 594) was used to counterstain tubulin at 1/200 dilution (Red). The Nuclear counterstain was DAPI (Blue).

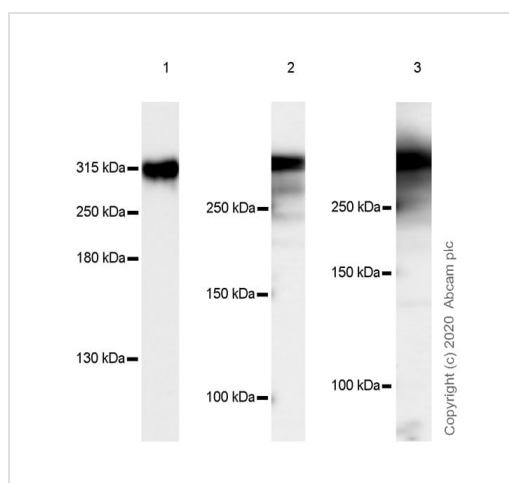
Secondary antibody only control: Secondary antibody is **ab150077** Goat Anti-Rabbit IgG H&L (Alexa Fluor® 488) at 1/1000 dilution.



Flow Cytometry (Intracellular) - Anti-CREBBP + KAT3B / p300 antibody [EPR23495-276] (ab275379)

Intracellular flow cytometric analysis of 4% paraformaldehyde fixed, 90% methanol permeabilized HeLa (Human cervix adenocarcinoma epithelial cell) cells labelling KAT3B/p300+CREBBP with ab275379 at 1/500 dilution (0.1ug) (Red) compared with a Rabbit monoclonal IgG (**ab172730**) isotype control (Black) and an unlabelled control (cells without incubation with primary antibody and secondary antibody) (Blue).

A Goat anti rabbit IgG (Alexa Fluor® 488, **ab150077**) at 1/2000 dilution was used as the secondary antibody.



Western blot - Anti-CREBBP + KAT3B / p300 antibody [EPR23495-276] (ab275379)

All lanes : Anti-CREBBP + KAT3B / p300 antibody [EPR23495-276] (ab275379) at 1/1000 dilution

Lane 1 : K-562 (human chronic myelogenous leukemia lymphoblast) whole cell lysate

Lane 2 : RAW 264.7 (mouse abelson murine leukemia virus-induced tumor macrophage) whole cell lysate

Lane 3 : PC-12 (rat adrenal gland pheochromocytoma) whole cell lysate

Lysates/proteins at 20 µg per lane.

Secondary

All lanes : Goat Anti-Rabbit IgG H&L (HRP) (**ab97051**) at 1/100000 dilution

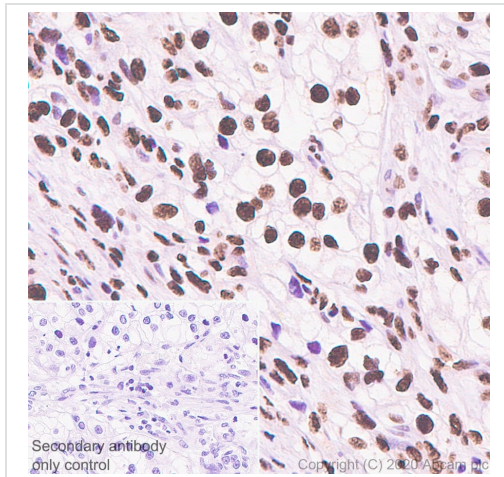
Observed band size: 300 kDa

Blocking and diluting buffer and concentration: 5% NFDM/TBST.

The molecular weight observed is consistent with what has been described in the literature (PMID: 8995708).

Lysates were made freshly and used in WB immediately to minimize protein degradation.

Exposure times: Lane 1: 48 seconds; Lane 2: 70 seconds; Lane 3: 59 seconds.

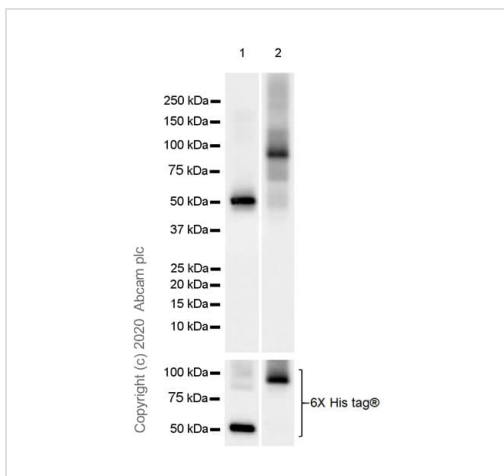


Immunohistochemistry (Formalin/PFA-fixed paraffin-embedded sections) - Anti-CREBBP + KAT3B / p300 antibody [EPR23495-276] (ab275379)

Immunohistochemical analysis of paraffin-embedded Human clear cell renal cell carcinoma tissue labeling KAT3B/p300+CREBBP with ab275379 at 1/5000 (0.093 ug/ml) dilution followed by a ready to use Rabbit specific IHC polymer detection kit HRP/DAB ([ab209101](#)). Nuclear staining on human clear cell renal cell carcinoma (PMID: 28551630). The section was incubated with ab275379 for 10 mins at room temperature. The immunostaining was performed on a Leica Biosystems BOND® RX instrument. Counterstained with Hematoxylin.

Secondary antibody only control: Secondary antibody is a ready to use Rabbit specific IHC polymer detection kit HRP/DAB ([ab209101](#)).

Heat mediated antigen retrieval with Citrate buffer (pH 6.0, epitope retrieval solution 1) for 20 mins.



Western blot - Anti-CREBBP + KAT3B / p300 antibody [EPR23495-276] (ab275379)

All lanes : Anti-CREBBP + KAT3B / p300 antibody [EPR23495-276] (ab275379) at 1/1000 dilution

Lane 1 : His-tagged human KAT3B/p300 recombinant protein, 20 ng

Lane 2 : His-tagged human CREBBP recombinant protein, E. coli extract, 20 ng

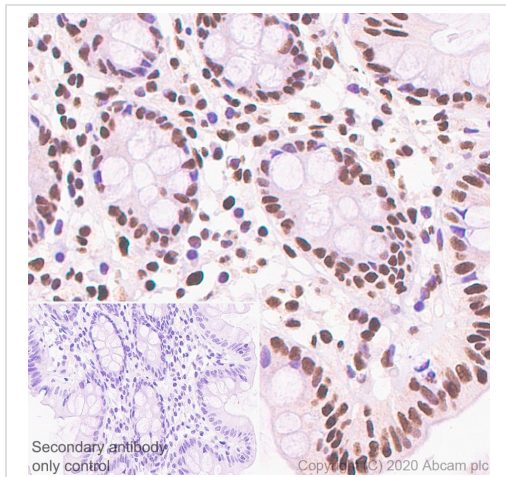
Secondary

All lanes : Goat Anti-Rabbit IgG H&L (HRP) ([ab97051](#)) at 1/100000 dilution

Blocking and diluting buffer and concentration: 5% NFDN/TBST.

This product can recognize both KAT3B/p300 and CREBBP.

Exposure time: 3 seconds.

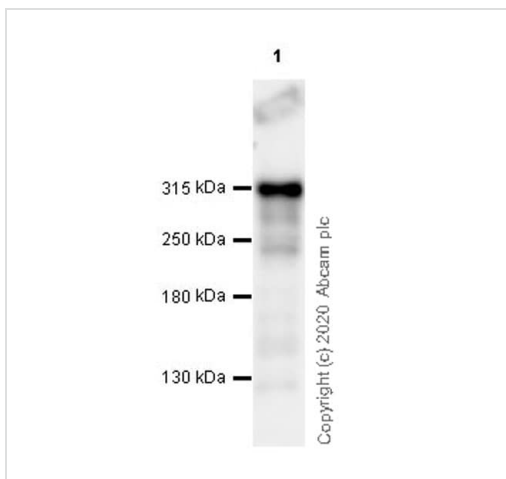


Immunohistochemistry (Formalin/PFA-fixed paraffin-embedded sections) - Anti-CREBBP + KAT3B / p300 antibody [EPR23495-276] (ab275379)

Immunohistochemical analysis of paraffin-embedded Human colon tissue labeling KAT3B/p300+CREBBP with ab275379 at 1/5000 (0.093 ug/ml) dilution followed by a ready to use Rabbit specific IHC polymer detection kit HRP/DAB ([ab209101](#)). Nuclear staining on human colon (PMID: 28586030). The section was incubated with ab275379 for 10 mins at room temperature. The immunostaining was performed on a Leica Biosystems BOND® RX instrument. Counterstained with Hematoxylin.

Secondary antibody only control: Secondary antibody is a ready to use Rabbit specific IHC polymer detection kit HRP/DAB ([ab209101](#)).

Heat mediated antigen retrieval with Citrate buffer (pH 6.0, epitope retrieval solution 1) for 20 mins.



Western blot - Anti-CREBBP + KAT3B / p300 antibody [EPR23495-276] (ab275379)

Anti-CREBBP + KAT3B / p300 antibody [EPR23495-276] (ab275379) at 1/1000 dilution + HeLa (human cervix adenocarcinoma epithelial cell) whole cell lysate at 20 µg

Secondary

VeriBlot for IP secondary antibody(HRP)([ab131366](#)) at 1/5000 dilution

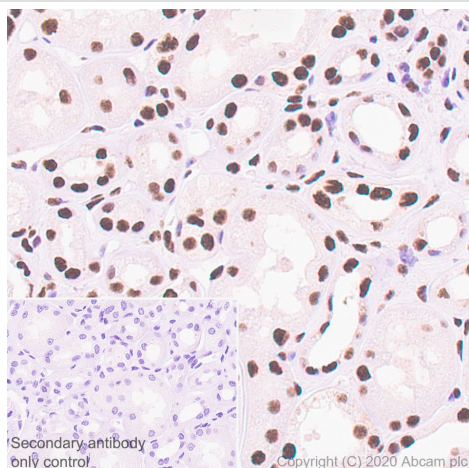
Observed band size: 300 kDa

Blocking and diluting buffer and concentration: 5% NFDM/TBST.

The molecular weight observed is consistent with what has been described in the literature (PMID: 8995708).

Lysate was made freshly and used in WB immediately to minimize protein degradation.

Exposure time: 32 seconds.



Immunohistochemistry (Formalin/PFA-fixed paraffin-embedded sections) - Anti-CREBBP + KAT3B / p300 antibody [EPR23495-276] (ab275379)

Immunohistochemical analysis of paraffin-embedded Human kidney tissue labeling KAT3B/p300+CREBBP with ab275379 at 1/5000 (0.093 ug/ml) dilution followed by a ready to use Rabbit specific IHC polymer detection kit HRP/DAB (**ab209101**). Nuclear staining on human kidney (PMID: 28551630). The section was incubated with ab275379 for 10 mins at room temperature. The immunostaining was performed on a Leica Biosystems BOND® RX instrument. Counterstained with Hematoxylin.

Secondary antibody only control: Secondary antibody is a ready to use Rabbit specific IHC polymer detection kit HRP/DAB (**ab209101**).

Heat mediated antigen retrieval with Citrate buffer (pH 6.0, epitope retrieval solution 1) for 20 mins.

Why choose a recombinant antibody?



Research with confidence
Consistent and reproducible results



Long-term and scalable supply
Recombinant technology



Success from the first experiment
Confirmed specificity



Ethical standards compliant
Animal-free production

Anti-CREBBP + KAT3B / p300 antibody
[EPR23495-276] (ab275379)

Please note: All products are "FOR RESEARCH USE ONLY. NOT FOR USE IN DIAGNOSTIC PROCEDURES"

Our Abpromise to you: Quality guaranteed and expert technical support

- Replacement or refund for products not performing as stated on the datasheet
- Valid for 12 months from date of delivery
- Response to your inquiry within 24 hours
- We provide support in Chinese, English, French, German, Japanese and Spanish
- Extensive multi-media technical resources to help you
- We investigate all quality concerns to ensure our products perform to the highest standards

If the product does not perform as described on this datasheet, we will offer a refund or replacement. For full details of the Abpromise, please visit <https://www.abcam.com/abpromise> or contact our technical team.

Terms and conditions

- Guarantee only valid for products bought direct from Abcam or one of our authorized distributors