

Product datasheet

Anti-CRF antibody [EPR19154] ab184238

Recombinant RabMAb

[1 Abreviews](#) [4 References](#) [3 Images](#)

Overview

Product name	Anti-CRF antibody [EPR19154]
Description	Rabbit monoclonal [EPR19154] to CRF
Host species	Rabbit
Tested applications	Suitable for: WB Unsuitable for: IHC-P
Species reactivity	Reacts with: Mouse, Rat, Human
Immunogen	Synthetic peptide. This information is proprietary to Abcam and/or its suppliers.
Positive control	WB: Human CRF fragment recombinant protein; Human brain, mouse brain, mouse hypothalamus, rat brain and rat hypothalamus lysates.
General notes	This product is a recombinant monoclonal antibody, which offers several advantages including: <ul style="list-style-type: none"> - High batch-to-batch consistency and reproducibility - Improved sensitivity and specificity - Long-term security of supply - Animal-free production For more information see here . Our RabMAb [®] technology is a patented hybridoma-based technology for making rabbit monoclonal antibodies. For details on our patents, please refer to RabMAb[®] patents .

Properties

Form	Liquid
Storage instructions	Shipped at 4°C. Store at +4°C short term (1-2 weeks). Upon delivery aliquot. Store at -20°C long term. Avoid freeze / thaw cycle.
Storage buffer	pH: 7.2 Preservative: 0.01% Sodium azide Constituents: 59% PBS, 0.05% BSA, 40% Glycerol
Purity	Protein A purified
Clonality	Monoclonal
Clone number	EPR19154

Isotype

IgG

Applications

The Abpromise guarantee

Our **Abpromise guarantee** covers the use of ab184238 in the following tested applications.

The application notes include recommended starting dilutions; optimal dilutions/concentrations should be determined by the end user.

Application	Abreviews	Notes
WB		1/1000. Detects a band of approximately 25 kDa (predicted molecular weight: 21 kDa).

Application notes

Is unsuitable for IHC-P.

Target

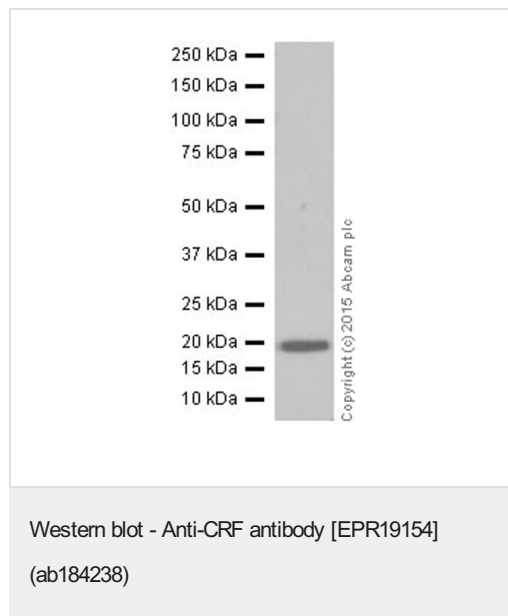
Relevance

CRF precursor is a 41-amino acid peptide derived from a 196-amino acid preprohormone. CRF is a neuroendocrine hormone secreted by the paraventricular nucleus (PVN) of the hypothalamus and is a key player in the hypothalamic pituitary adrenal axis. It is also synthesized in peripheral tissues, such as T lymphocytes and is highly expressed in the placenta. Neuronal CRF is important in a variety of diverse roles including, memory, depression, stress, kidney function, parturition, metabolism and feeding (to mention a few).

Cellular localization

Cytoplasmic and Secreted

Images



Anti-CRF antibody [EPR19154] (ab184238) at 1/1000 dilution +
Human CRF fragment recombinant protein at 0.01 µg

Secondary

Goat Anti-Rabbit IgG H&L (HRP) (**ab97051**) at 1/100000 dilution

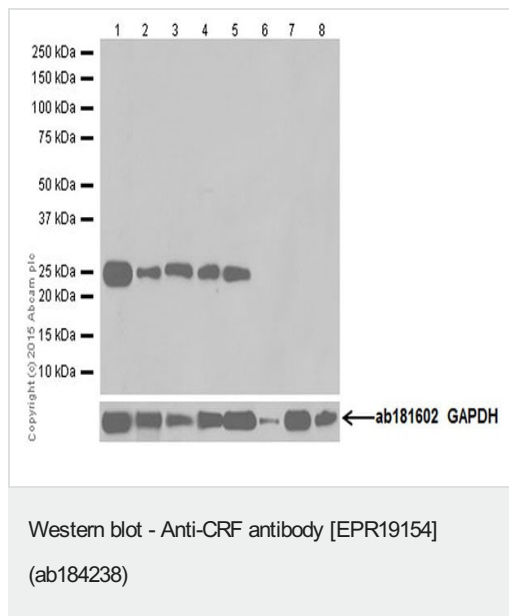
Predicted band size: 21 kDa

Observed band size: 21 kDa

Exposure time: 1 second

Blocking/Dilution buffer: 5% NFDM/TBST.

Human CRF fragment recombinant protein contains aa20-185 with a His-Tag®. This recombinant human fragment protein was made in-house.



All lanes : Anti-CRF antibody [EPR19154] (ab184238) at 1/5000 dilution

Lane 1 : Human brain tissue lysate

Lane 2 : Mouse brain tissue lysate

Lane 3 : Mouse hypothalamus tissue lysate

Lane 4 : Rat brain tissue lysate

Lane 5 : Rat hypothalamus tissue lysate

Lane 6 : Mouse pancreas tissue lysate

Lane 7 : Mouse skin tissue lysate

Lane 8 : Rat skin tissue lysate

Lysates/proteins at 20 µg per lane.

Secondary

All lanes : Goat Anti-Rabbit IgG Peroxidase Conjugate, specific to the non-reduced form of IgG at 1/10000 dilution

Predicted band size: 21 kDa

Observed band size: 25 kDa

Exposure time: 3 minutes

Blocking/Dilution buffer: 5% NFDM/TBST.

Why choose a recombinant antibody?

Research with confidence
Consistent and reproducible results

Long-term and scalable supply
Recombinant technology

Success from the first experiment
Confirmed specificity

Ethical standards compliant
Animal-free production

Anti-CRF antibody [EPR19154] (ab184238)

Please note: All products are "FOR RESEARCH USE ONLY. NOT FOR USE IN DIAGNOSTIC PROCEDURES"

Our Abpromise to you: Quality guaranteed and expert technical support

- Replacement or refund for products not performing as stated on the datasheet
- Valid for 12 months from date of delivery
- Response to your inquiry within 24 hours

- We provide support in Chinese, English, French, German, Japanese and Spanish
- Extensive multi-media technical resources to help you
- We investigate all quality concerns to ensure our products perform to the highest standards

If the product does not perform as described on this datasheet, we will offer a refund or replacement. For full details of the Abpromise, please visit <https://www.abcam.com/abpromise> or contact our technical team.

Terms and conditions

- Guarantee only valid for products bought direct from Abcam or one of our authorized distributors