

Anti-CRLF2 antibody [EPR22478-133] - BSA and Azide free ab256305

Recombinant RabMAb

4 Images

Overview

Product name	Anti-CRLF2 antibody [EPR22478-133] - BSA and Azide free
Description	Rabbit monoclonal [EPR22478-133] to CRLF2 - BSA and Azide free
Host species	Rabbit
Tested applications	Suitable for: Flow Cyt Unsuitable for: ICC/IF, IHC-P, IP or WB
Species reactivity	Reacts with: Human
Immunogen	Synthetic peptide. This information is proprietary to Abcam and/or its suppliers.
Positive control	Flow Cyt: Human PBMCs.
General notes	<p>ab256305 is the carrier-free version of ab224196.</p> <p>Our carrier-free antibodies are typically supplied in a PBS-only formulation, purified and free of BSA, sodium azide and glycerol. The carrier-free buffer and high concentration allow for increased conjugation efficiency.</p> <p>This conjugation-ready format is designed for use with fluorochromes, metal isotopes, oligonucleotides, and enzymes, which makes them ideal for antibody labelling, functional and cell-based assays, flow-based assays (e.g. mass cytometry) and Multiplex Imaging applications.</p> <p>Use our conjugation kits for antibody conjugates that are ready-to-use in as little as 20 minutes with <1 minute hands-on-time and 100% antibody recovery: available for fluorescent dyes, HRP, biotin and gold.</p> <p>This product is compatible with the Maxpar[®] Antibody Labeling Kit from Fluidigm, without the need for antibody preparation. Maxpar[®] is a trademark of Fluidigm Canada Inc.</p> <p>This product is a recombinant monoclonal antibody, which offers several advantages including:</p> <ul style="list-style-type: none"> - High batch-to-batch consistency and reproducibility - Improved sensitivity and specificity - Long-term security of supply - Animal-free production <p>For more information see here.</p> <p>Our RabMAb[®] technology is a patented hybridoma-based technology for making rabbit monoclonal antibodies. For details on our patents, please refer to RabMAb[®] patents.</p>

Properties

Form	Liquid
Storage instructions	Shipped at 4°C. Store at +4°C. Do Not Freeze.
Storage buffer	pH: 7.2 Constituent: PBS
Carrier free	Yes
Purity	Protein A purified
Clonality	Monoclonal
Clone number	EPR22478-133
Isotype	IgG

Applications

The Abpromise guarantee Our **Abpromise guarantee** covers the use of ab256305 in the following tested applications. The application notes include recommended starting dilutions; optimal dilutions/concentrations should be determined by the end user.

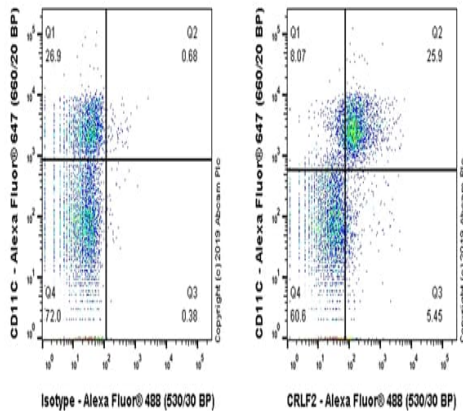
Application	Abreviews	Notes
Flow Cyt		Use at an assay dependent concentration.

Application notes Is unsuitable for ICC/IF, IHC-P, IP or WB.

Target

Function	Receptor for thymic stromal lymphopoietin (TSLP). Forms a functional complex with TSLP and IL7R which is capable of stimulating cell proliferation through activation of STAT3 and STAT5. Also activates JAK2 (By similarity). Implicated in the development of the hematopoietic system.
Tissue specificity	Expressed in heart, skeletal muscle, kidney and adult and fetal liver. Primarily expressed in dendrites and monocytes. Weakly expressed in T-cells.
Sequence similarities	Belongs to the type I cytokine receptor family. Type 5 subfamily. Contains 1 fibronectin type-III domain.
Domain	The WSXWS motif appears to be necessary for proper protein folding and thereby efficient intracellular transport and cell-surface receptor binding. The box 1 motif is important for association with JAKs.
Cellular localization	Secreted and Cell membrane.

Images



Flow Cytometry - Anti-CRLF2 antibody [EPR22478-133] - BSA and Azide free (ab256305)

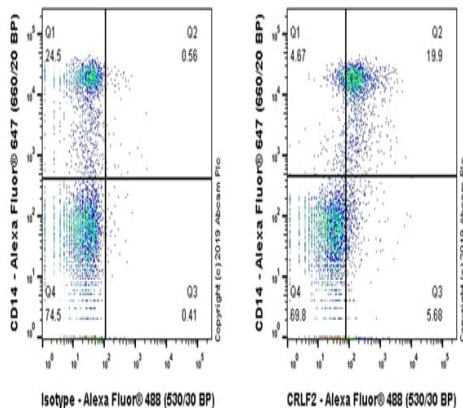
Flow cytometric analysis of human peripheral blood mononuclear cells labeling CRLF2 with **ab224196** at 1/60 dilution (Right compared with a Rabbit IgG, monoclonal [EPR25A] - Isotype Control (**ab172730**) (Left).

Goat Anti-Rabbit IgG Fc (Alexa Fluor® 488) preadsorbed (**ab150097**), at 1/5000 dilution was used as the secondary antibody.

Cells were stained with rabbit IgG (Left) or **ab224196** (Right). Then stained with anti-CD11c conjugated to Alexa Fluor® 647.

Gated on viable cells.

This data was developed using the same antibody clone in a different buffer formulation containing PBS, BSA, glycerol, and sodium azide (**ab224196**).



Flow Cytometry - Anti-CRLF2 antibody [EPR22478-133] - BSA and Azide free (ab256305)

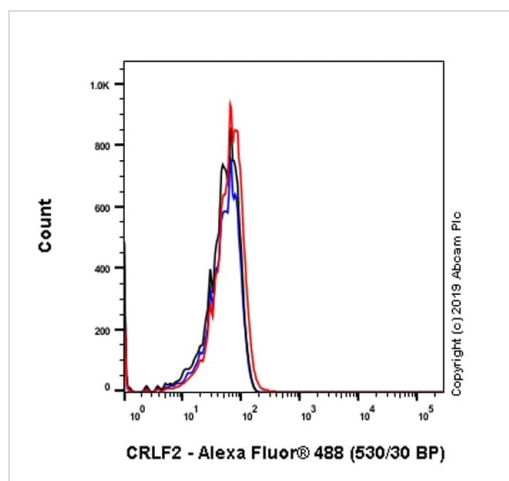
Flow cytometric analysis of human peripheral blood mononuclear cells labeling CRLF2 with **ab224196** at 1/60 dilution (Right compared with a Rabbit IgG, monoclonal [EPR25A] - Isotype Control (**ab172730**) (Left).

Goat Anti-Rabbit IgG Fc (Alexa Fluor® 488) preadsorbed (**ab150097**), at 1/5000 dilution was used as the secondary antibody.

Cells were stained with rabbit IgG (Left) or **ab224196** (Right). Then stained with anti-CD14 conjugated to Alexa Fluor® 647.

Gated on viable cells.

This data was developed using the same antibody clone in a different buffer formulation containing PBS, BSA, glycerol, and sodium azide (**ab224196**).



Flow Cytometry - Anti-CRLF2 antibody [EPR22478-133] - BSA and Azide free (ab256305)





Flow cytometric analysis of LNCaP (human prostate cancer cell line) cells labeling CRLF2 with **ab224196** at 1/60 dilution (red) compared with a Rabbit IgG, monoclonal [EPR25A] - Isotype Control (**ab172730**) (black) and an unlabeled control (cells without incubation with primary antibody and secondary antibody) (blue).

Goat Anti-Rabbit IgG Fc (Alexa Fluor® 488) preadsorbed (**ab150097**), at 1/5000 dilution was used as the secondary antibody.

Negative control: LNCaP (PMID: 20236697). Gated on viable cells.

This data was developed using the same antibody clone in a different buffer formulation containing PBS, BSA, glycerol, and sodium azide (**ab224196**).

Why choose a recombinant antibody?

 <p>Research with confidence Consistent and reproducible results</p>	 <p>Long-term and scalable supply Recombinant technology</p>
 <p>Success from the first experiment Confirmed specificity</p>	 <p>Ethical standards compliant Animal-free production</p>

Anti-CRLF2 antibody [EPR22478-133] - BSA and Azide free (ab256305)

Please note: All products are "FOR RESEARCH USE ONLY. NOT FOR USE IN DIAGNOSTIC PROCEDURES"

Our Abpromise to you: Quality guaranteed and expert technical support

- Replacement or refund for products not performing as stated on the datasheet

- Valid for 12 months from date of delivery
- Response to your inquiry within 24 hours
- We provide support in Chinese, English, French, German, Japanese and Spanish
- Extensive multi-media technical resources to help you
- We investigate all quality concerns to ensure our products perform to the highest standards

If the product does not perform as described on this datasheet, we will offer a refund or replacement. For full details of the Abpromise, please visit <https://www.abcam.com/abpromise> or contact our technical team.

Terms and conditions

- Guarantee only valid for products bought direct from Abcam or one of our authorized distributors