

Product datasheet

Anti-CRMP1 + CRMP2 antibody [EPR7792] ab129082

Recombinant RabMAb

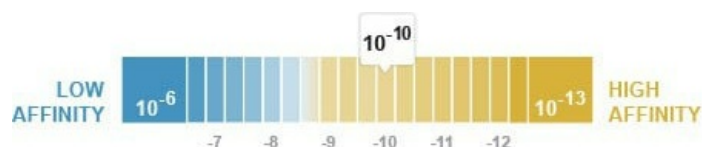
[1 Abreviews](#) [18 References](#) [13 Images](#)

Overview

Product name	Anti-CRMP1 + CRMP2 antibody [EPR7792]
Description	Rabbit monoclonal [EPR7792] to CRMP1 + CRMP2
Host species	Rabbit
Specificity	The mouse and rat recommendation is based on the WB results. We do not guarantee IHC-P for mouse and rat.
Tested applications	Suitable for: Flow Cyt (Intra), WB, IP, IHC-P, ICC/IF
Species reactivity	Reacts with: Mouse, Rat, Human
Immunogen	Synthetic peptide. This information is proprietary to Abcam and/or its suppliers.
Positive control	ICC/IF: NIH/3T3 cells. Flow Cyt (intra): SH-SY5Y and NIH/3T3 cells. WB: PC-12, Jurkat, U-87 MG, HeLa and NIH/3T3 cell lysate. IHC-P: Human astrocytoma, Human colon carcinoma, and Human glioma tissues.
General notes	<p>This product is a recombinant monoclonal antibody, which offers several advantages including:</p> <ul style="list-style-type: none"> - High batch-to-batch consistency and reproducibility - Improved sensitivity and specificity - Long-term security of supply - Animal-free production <p>For more information see here.</p> <p>Our RabMAb[®] technology is a patented hybridoma-based technology for making rabbit monoclonal antibodies. For details on our patents, please refer to RabMAb[®] patents.</p>

Properties

Form	Liquid
Storage instructions	Shipped at 4°C. Store at -20°C. Stable for 12 months at -20°C.
Dissociation constant (K_D)	K _D = 2.38 x 10 ⁻¹⁰ M



[Learn more about K_D](#)

Storage buffer	pH: 7.20 Preservative: 0.01% Sodium azide Constituents: PBS, 40% Glycerol, 0.05% BSA
Purity	Protein A purified
Clonality	Monoclonal
Clone number	EPR7792
Isotype	IgG

Applications

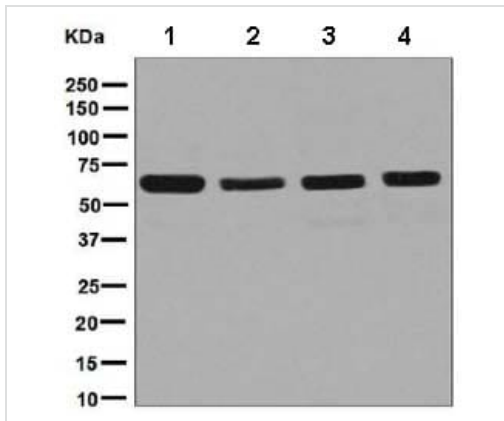
The Abpromise guarantee Our **Abpromise guarantee** covers the use of ab129082 in the following tested applications. The application notes include recommended starting dilutions; optimal dilutions/concentrations should be determined by the end user.

Application	Abreviews	Notes
Flow Cyt (Intra)		1/10 - 1/1000. ab172730 - Rabbit monoclonal IgG, is suitable for use as an isotype control with this antibody.
WB		1/10000 - 1/50000. Detects a band of approximately 64 kDa (predicted molecular weight: 62 kDa).
IP		1/10 - 1/100.
IHC-P		1/1000. Perform heat mediated antigen retrieval with citrate buffer pH 6 before commencing with IHC staining protocol. For unpurified use at 1/100 - 1/250. See IHC antigen retrieval protocols . The mouse and rat recommendation is based on the WB results. We do not guarantee IHC-P for mouse and rat.
ICC/IF		1/50 - 1/100.

Target

Cellular localization CRMP1: Cytoplasm. Cytoplasm > cytoskeleton > centrosome. Cytoplasm > cytoskeleton > spindle. Associated with centrosomes and the mitotic spindle during metaphase. CRMP2: Cytoplasm.

Images



Western blot - Anti-CRMP1 + CRMP2 antibody [EPR7792] (ab129082)

All lanes : Anti-CRMP1 + CRMP2 antibody [EPR7792] (ab129082) at 1/10000 dilution

Lane 1 : PC12 cell lysate

Lane 2 : Jurkat cell lysate

Lane 3 : U87 MG cell lysate

Lane 4 : NIH 3T3 cell lysate

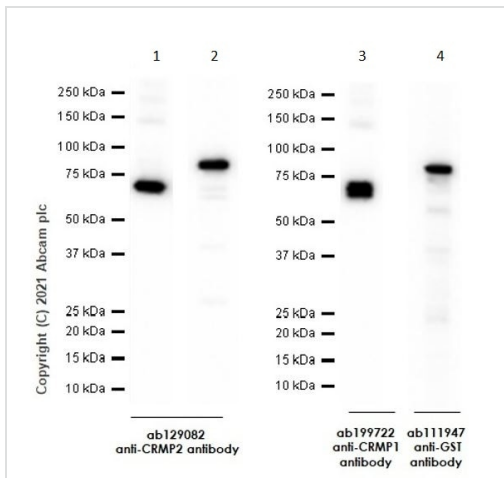
Lysates/proteins at 10 µg per lane.

Secondary

All lanes : HRP labelled goat anti-rabbit at 1/2000 dilution

Predicted band size: 62 kDa

Observed band size: 64 kDa



Western blot - Anti-CRMP1 + CRMP2 antibody [EPR7792] (ab129082)

Lanes 1-2 : Anti-CRMP1 + CRMP2 antibody [EPR7792] (ab129082) at 1/1000 dilution

Lane 3 : Anti-CRMP1 antibody [EP14521] ([ab199722](#)) at 1/1000 dilution

Lane 4 : Anti-GST antibody [EPR4236] ([ab111947](#)) at 1/1000 dilution

Lanes 1 & 3 : Recombinant Human CRMP1 protein ([ab202599](#))

Lanes 2 & 4 : Recombinant Human CRMP2 protein ([ab114269](#))

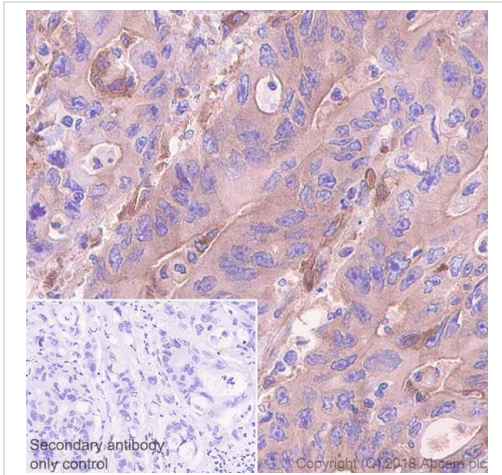
Secondary

All lanes : Goat Anti-Rabbit IgG H&L (HRP) ([ab97051](#)) at 1/20000 dilution

Predicted band size: 62 kDa

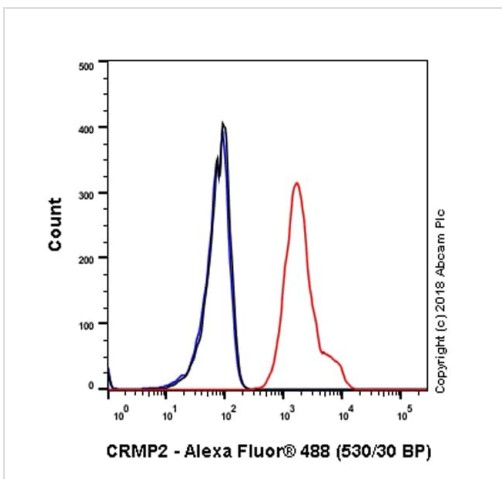
Exposure time: 3 seconds

Blocking and dilution buffer: 5% NFDM /TBST



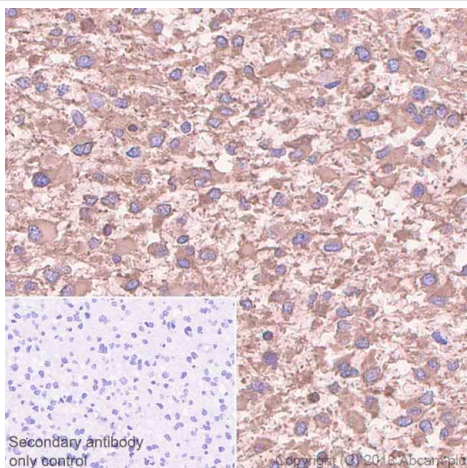
Immunohistochemistry (Formalin/PFA-fixed paraffin-embedded sections) analysis of Human colon carcinoma tissue sections labeling CRMP2 with Purified ab129082 at 1:1000 dilution (0.12 µg/ml). Heat mediated antigen retrieval was performed using **ab93684** (Tris/EDTA buffer, pH 9.0). ImmunoHistoProbe one step HRP Polymer (ready to use) was used as the secondary antibody. Negative control: PBS instead of the primary antibody. Hematoxylin was used as a counterstain.

Immunohistochemistry (Formalin/PFA-fixed paraffin-embedded sections) - Anti-CRMP1 + CRMP2 antibody [EPR7792] (ab129082)



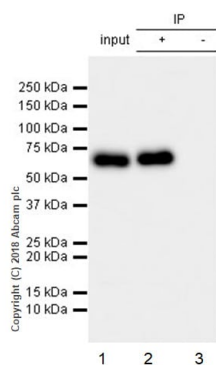
Intracellular Flow Cytometry analysis of NIH/3T3 (Mouse embryonic fibroblast) cells labeling CRMP2 with Purified ab129082 at 1/20 dilution (10 µg/ml) (red). Cells were fixed with 4% Paraformaldehyde. A Goat anti rabbit IgG (Alexa Fluor® 488, **ab150077**) secondary antibody was used at 1/2000. Isotype control - Rabbit monoclonal IgG (Black). Unlabeled control - Cell without incubation with primary antibody and secondary antibody (Blue).

Flow Cytometry (Intracellular) - Anti-CRMP1 + CRMP2 antibody [EPR7792] (ab129082)



Immunohistochemistry (Formalin/PFA-fixed paraffin-embedded sections) - Anti-CRMP1 + CRMP2 antibody [EPR7792] (ab129082)

Immunohistochemistry (Formalin/PFA-fixed paraffin-embedded sections) analysis of Human glioma tissue sections labeling CRMP2 with Purified ab129082 at 1:1000 dilution (0.12 µg/ml). Heat mediated antigen retrieval was performed using [ab93684](#) (Tris/EDTA buffer, pH 9.0). ImmunoHistoProbe one step HRP Polymer (ready to use) was used as the secondary antibody. Negative control: PBS instead of the primary antibody. Hematoxylin was used as a counterstain.



Immunoprecipitation - Anti-CRMP1 + CRMP2 antibody [EPR7792] (ab129082)

ab129082 (purified) at 1:20 dilution (0.5µg) immunoprecipitating CRMP2 in U-87 MG whole cell lysate.

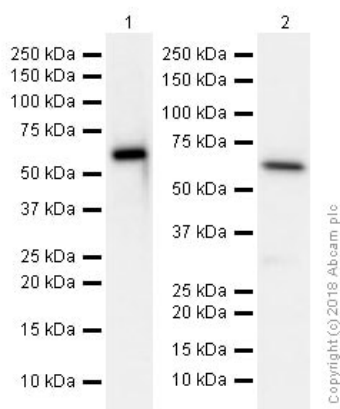
Lane 1 (input): U-87 MG (Human glioblastoma-astrocytoma epithelial cell) whole cell lysate 10µg

Lane 2 (+): ab129082 & U-87 MG whole cell lysate

Lane 3 (-): Rabbit monoclonal IgG ([ab172730](#)) instead of ab129082 in U-87 MG whole cell lysate

For western blotting, VeriBlot for IP Detection Reagent (HRP) ([ab131366](#)) was used for detection at 1:1000 dilution.

Blocking and diluting buffer: 5% NFDm/TBST.



Western blot - Anti-CRMP1 + CRMP2 antibody [EPR7792] (ab129082)

All lanes : Anti-CRMP1 + CRMP2 antibody [EPR7792] (ab129082) at 1/50000 dilution

Lane 1 : U-87 MG (Human glioblastoma-astrocytoma epithelial cell) whole cell lysates

Lane 2 : HeLa (Human cervix adenocarcinoma epithelial cell) whole cell lysates

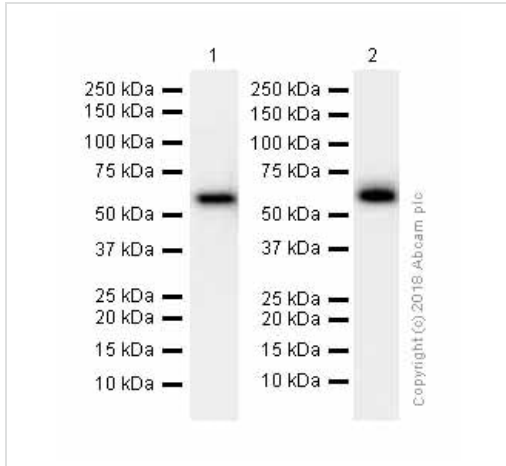
Secondary

All lanes : Goat Anti-Rabbit IgG H&L (HRP) ([ab97051](#)) at 1/20000 dilution

Predicted band size: 62 kDa

Observed band size: 64 kDa

U-87 MG (Human glioblastoma-astrocytoma epithelial cell) whole cell lysates



Western blot - Anti-CRMP1 + CRMP2 antibody [EPR7792] (ab129082)

All lanes : Anti-CRMP1 + CRMP2 antibody [EPR7792]

(ab129082) at 1/100000 dilution

Lane 1 : NIH/3T3 (Mouse embryonic fibroblast) whole cell lysates

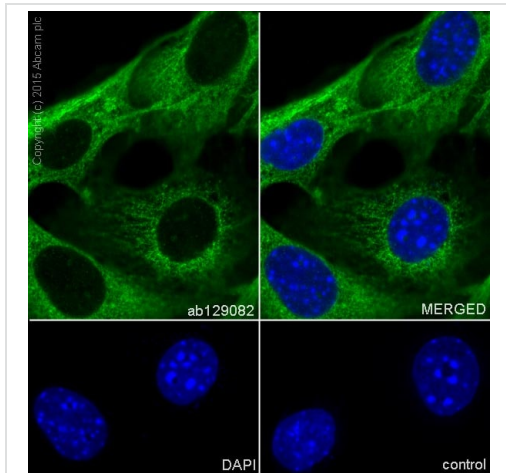
Lane 2 : PC-12 (Rat adrenal gland pheochromocytoma) whole cell lysates

Secondary

All lanes : Goat Anti-Rabbit IgG H&L (HRP) (**ab97051**) at 1/20000 dilution

Predicted band size: 62 kDa

Observed band size: 64 kDa

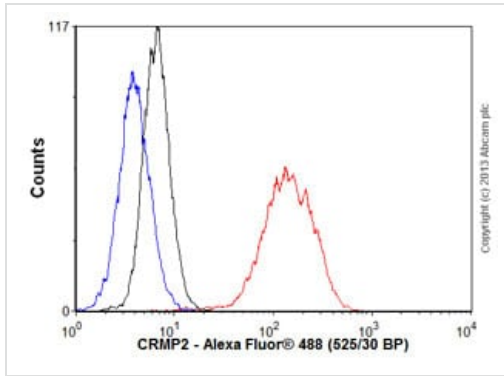


Immunocytochemistry/ Immunofluorescence - Anti-CRMP1 + CRMP2 antibody [EPR7792] (ab129082)

ab129082 staining CRMP2 in NIH/3T3 (mouse embryonic fibroblast) cells by ICC/IF

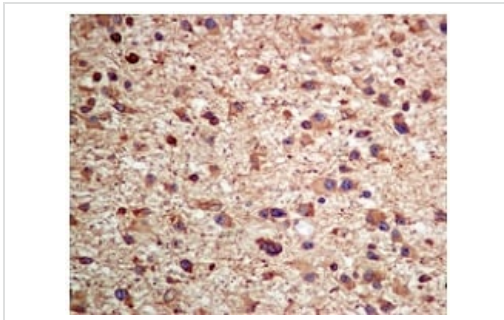
(Immunocytochemistry/immunofluorescence). Cells were fixed with 100% methanol. Samples were incubated with primary antibody at a dilution of 1/500. A goat anti rabbit IgG (Alexa Fluor® 488) (**ab150077**) was used as the secondary antibody at a dilution of 1/1000. DAPI was used as a nuclear counterstain.

Negative control 1: PBS only.



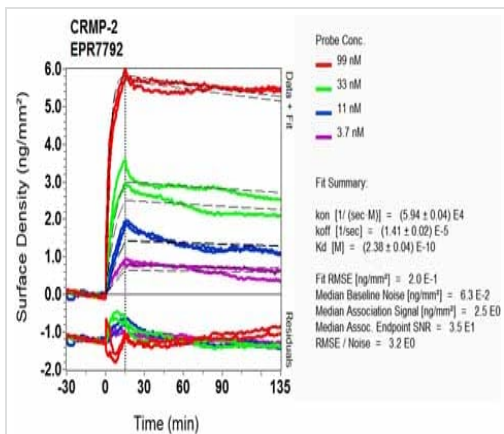
Flow Cytometry (Intracellular) - Anti-CRMP1 + CRMP2 antibody [EPR7792] (ab129082)

Overlay histogram showing SH-SY5Y cells stained with ab129082 (red line). The cells were fixed with 80% methanol (5 min) and then permeabilized with 0.1% PBS-Tween for 20 min. The cells were then incubated in 1x PBS / 10% normal goat serum / 0.3M glycine to block non-specific protein-protein interactions followed by the antibody (ab129082, 1/1000 dilution) for 30 min at 22°C. The secondary antibody used was Alexa Fluor® 488 goat anti-rabbit IgG (H&L) ([ab150077](#)) at 1/2000 dilution for 30 min at 22°C. Isotype control antibody (black line) was rabbit IgG (monoclonal) (0.1µg/1x10⁶ cells) used under the same conditions. Unlabelled sample (blue line) was also used as a control. Acquisition of >5,000 events were collected using a 20mW Argon ion laser (488nm) and 525/30 bandpass filter.



Immunohistochemistry (Formalin/PFA-fixed paraffin-embedded sections) - Anti-CRMP1 + CRMP2 antibody [EPR7792] (ab129082)

ab129082, at a dilution of 1/100, staining CRMP2 in paraffin embedded Human astrocytoma tissue by Immunohistochemistry. Perform heat mediated antigen retrieval with citrate buffer pH 6 before commencing with IHC staining protocol.







OIR-D Scanning - Anti-CRMP1 + CRMP2 antibody [EPR7792] (ab129082)

Equilibrium dissociation constant (K_D)

Learn more about K_D

[Click here to learn more about \$K_D\$](#)

Why choose a recombinant antibody?

 Research with confidence Consistent and reproducible results	 Long-term and scalable supply Recombinant technology
 Success from the first experiment Confirmed specificity	 Ethical standards compliant Animal-free production

Anti-CRMP1 + CRMP2 antibody [EPR7792]
(ab129082)

Please note: All products are "FOR RESEARCH USE ONLY. NOT FOR USE IN DIAGNOSTIC PROCEDURES"

Our Abpromise to you: Quality guaranteed and expert technical support

- Replacement or refund for products not performing as stated on the datasheet
- Valid for 12 months from date of delivery
- Response to your inquiry within 24 hours
- We provide support in Chinese, English, French, German, Japanese and Spanish
- Extensive multi-media technical resources to help you
- We investigate all quality concerns to ensure our products perform to the highest standards

If the product does not perform as described on this datasheet, we will offer a refund or replacement. For full details of the Abpromise, please visit <https://www.abcam.com/abpromise> or contact our technical team.

Terms and conditions

- Guarantee only valid for products bought direct from Abcam or one of our authorized distributors