


## Product datasheet

# Anti-CRMP5 antibody ab79008

★☆☆☆☆ [1 Abreviews](#) [3 Images](#)

### Overview

---

<b>Product name</b>	Anti-CRMP5 antibody
<b>Description</b>	Rabbit polyclonal to CRMP5
<b>Host species</b>	Rabbit
<b>Tested applications</b>	<b>Suitable for:</b> WB, ICC/IF, IP
<b>Species reactivity</b>	<b>Reacts with:</b> Human <b>Predicted to work with:</b> Mouse, Rat 
<b>Immunogen</b>	Synthetic peptide corresponding to Human CRMP5 aa 450-550 conjugated to keyhole limpet haemocyanin. (Peptide available as <a href="#">ab89373</a> )
<b>Positive control</b>	This antibody gave a positive signal in human brain and human spinal cord tissue lysates and in the following whole cell lysates: SHSY-5Y; SK N BE; SHSY-5Y.
<b>General notes</b>	<p>The Life Science industry has been in the grips of a reproducibility crisis for a number of years. Abcam is leading the way in addressing this with our range of recombinant monoclonal antibodies and knockout edited cell lines for gold-standard validation. Please check that this product meets your needs before purchasing.</p> <p>If you have any questions, special requirements or concerns, please send us an inquiry and/or contact our Support team ahead of purchase. Recommended alternatives for this product can be found below, along with publications, customer reviews and Q&amp;As</p>

### Properties

---

<b>Form</b>	Liquid
<b>Storage instructions</b>	Shipped at 4°C. Store at +4°C short term (1-2 weeks). Upon delivery aliquot. Store at -20°C or -80°C. Avoid freeze / thaw cycle.
<b>Storage buffer</b>	pH: 7.40 Preservative: 0.02% Sodium azide Constituent: PBS

Batches of this product that have a concentration < 1mg/ml may have BSA added as a stabilising agent. If you would like information about the formulation of a specific lot, please contact our scientific support team who will be happy to help.

<b>Purity</b>	Immunogen affinity purified
<b>Clonality</b>	Polyclonal
<b>Isotype</b>	IgG

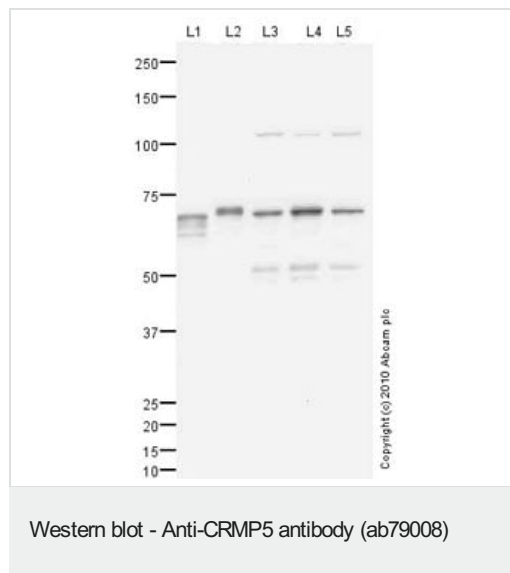
## Applications

**The Abpromise guarantee** Our **Abpromise guarantee** covers the use of ab79008 in the following tested applications. The application notes include recommended starting dilutions; optimal dilutions/concentrations should be determined by the end user.

Application	Abreviews	Notes
<b>WB</b>		Use at an assay dependent concentration. Detects a band of approximately 70 kDa (predicted molecular weight: 61 kDa).
<b>ICC/IF</b>		Use a concentration of 5 µg/ml.
<b>IP</b>		Use a concentration of 5 µg/ml.

## Target

## Images



**All lanes** : Anti-CRMP5 antibody (ab79008) at 1 µg/ml

**Lane 1** : Human brain tissue lysate - total protein (**ab29466**)

**Lane 2** : Human spinal cord tissue lysate - total protein (**ab29188**)

**Lanes 3 & 5** : SHSY-5Y (Human neuroblastoma cell line) Whole Cell Lysate

**Lane 4** : SK N BE (Human neuroblastoma) Whole Cell Lysate

Lysates/proteins at 10 µg per lane.

### Secondary

**All lanes** : Goat polyclonal to Rabbit IgG - H&L - Pre-Adsorbed (HRP) at 1/3000 dilution

Developed using the ECL technique.

Performed under reducing conditions.

**Predicted band size:** 61 kDa

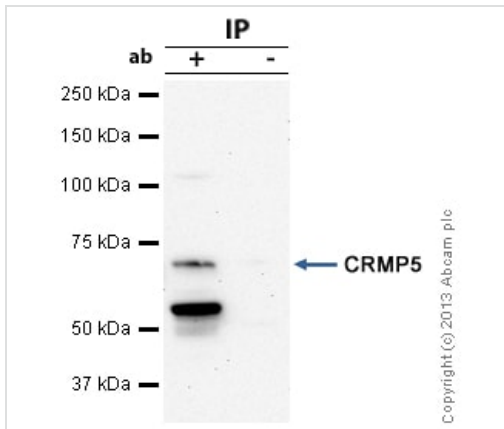
**Observed band size:** 70 kDa

**Additional bands at:** 110 kDa, 55 kDa. We are unsure as to the

identity of these extra bands.

**Exposure time:** 2 minutes

CRMP5 contains a number of potential phosphorylation sites (SwissProt data) which may explain it running at a higher molecular weight than predicted.



Immunoprecipitation - Anti-CRMP5 antibody (ab79008)

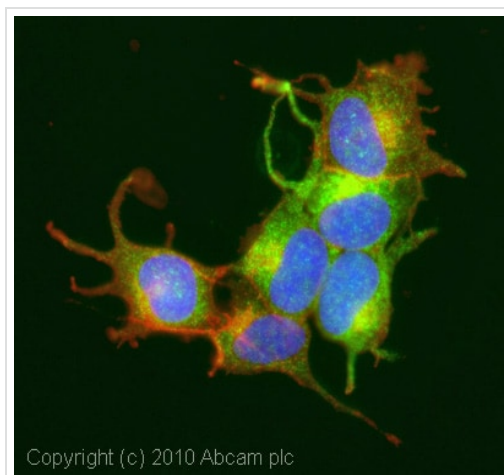
CRMP5 was immunoprecipitated using 0.5mg SHSY5Y whole cell extract, 5µg of Rabbit polyclonal to CRMP5 and 50µl of protein G magnetic beads (+). No antibody was added to the control (-).

The antibody was incubated under agitation with Protein G beads for 10min, SHSY5Y whole cell extract lysate diluted in RIPA buffer was added to each sample and incubated for a further 10min under agitation.

Proteins were eluted by addition of 40µl SDS loading buffer and incubated for 10min at 70°C; 10µl of each sample was separated on a SDS PAGE gel, transferred to a nitrocellulose membrane, blocked with 5% BSA and probed with ab79008.

Secondary: Mouse monoclonal [SB62a] Secondary Antibody to Rabbit IgG light chain (HRP) ([ab99697](#)).

Band: 70kDa; CRMP5, non specific band - 55kDa: We are unsure as to the identity of this extra band.



Immunocytochemistry/ Immunofluorescence - Anti-CRMP5 antibody (ab79008)

ICC/IF image of ab79008 stained SHSY5Y cells. The cells were 4% formaldehyde fixed (10 min) and then incubated in 1%BSA / 10% normal goat serum / 0.3M glycine in 0.1% PBS-Tween for 1h to permeabilise the cells and block non-specific protein-protein interactions. The cells were then incubated with the antibody (ab79008, 5µg/ml) overnight at +4°C. The secondary antibody (green) was Alexa Fluor® 488 goat anti-rabbit IgG (H+L) used at a 1/1000 dilution for 1h. Alexa Fluor® 594 WGA was used to label plasma membranes (red) at a 1/200 dilution for 1h. DAPI was used to stain the cell nuclei (blue) at a concentration of 1.43µM. This antibody also gave a positive result in 100% methanol fixed (5 min) SHSY5Y cells at 5µg/ml.

**Please note:** All products are "FOR RESEARCH USE ONLY. NOT FOR USE IN DIAGNOSTIC PROCEDURES"

## **Our Abpromise to you: Quality guaranteed and expert technical support**

---

- Replacement or refund for products not performing as stated on the datasheet
- Valid for 12 months from date of delivery
- Response to your inquiry within 24 hours
  
- We provide support in Chinese, English, French, German, Japanese and Spanish
- Extensive multi-media technical resources to help you
- We investigate all quality concerns to ensure our products perform to the highest standards

If the product does not perform as described on this datasheet, we will offer a refund or replacement. For full details of the Abpromise, please visit <https://www.abcam.com/abpromise> or contact our technical team.

## **Terms and conditions**

---

- Guarantee only valid for products bought direct from Abcam or one of our authorized distributors