


## Product datasheet

# Anti-CRTH2 antibody ab150632

★★★★☆ [2 Abreviews](#) [3 Images](#)

### Overview

---

<b>Product name</b>	Anti-CRTH2 antibody
<b>Description</b>	Rabbit polyclonal to CRTH2
<b>Host species</b>	Rabbit
<b>Specificity</b>	BLAST analysis of the peptide immunogen showed no homology with other human proteins.
<b>Tested applications</b>	<b>Suitable for:</b> IHC-P, ICC
<b>Species reactivity</b>	<b>Reacts with:</b> Human <b>Predicted to work with:</b> Horse, Cow, Dog, Monkey, Gorilla, Elephant 
<b>Immunogen</b>	Synthetic peptide corresponding to Human CRTH2.
<b>Positive control</b>	IHC-P: Human nasal mucosa tissue (eosinophils). ICC: CRTH2 transfected HEK293 cells.
<b>General notes</b>	<p>The Life Science industry has been in the grips of a reproducibility crisis for a number of years. Abcam is leading the way in addressing this with our range of recombinant monoclonal antibodies and knockout edited cell lines for gold-standard validation. Please check that this product meets your needs before purchasing.</p> <p>If you have any questions, special requirements or concerns, please send us an inquiry and/or contact our Support team ahead of purchase. Recommended alternatives for this product can be found below, along with publications, customer reviews and Q&amp;As</p>

### Properties

---

<b>Form</b>	Liquid
<b>Storage instructions</b>	Shipped at 4°C.
<b>Storage buffer</b>	pH: 7.4 Preservative: 0.1% Sodium azide Constituent: 99% PBS
<b>Purity</b>	Immunogen affinity purified
<b>Clonality</b>	Polyclonal
<b>Isotype</b>	IgG

### Applications

---

## The Abpromise guarantee

Our **Abpromise guarantee** covers the use of ab150632 in the following tested applications.

The application notes include recommended starting dilutions; optimal dilutions/concentrations should be determined by the end user.

Application	Abreviews	Notes
IHC-P	★★★★★ (1)	Use a concentration of 16 - 32 µg/ml. Perform heat mediated antigen retrieval before commencing with IHC staining protocol.
ICC	★★★★★ (1)	Use at an assay dependent concentration.

## Target

### Function

Orphan receptor.

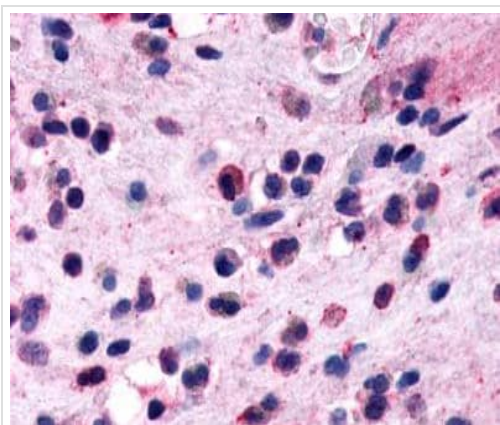
### Sequence similarities

Belongs to the G-protein coupled receptor 1 family.

### Cellular localization

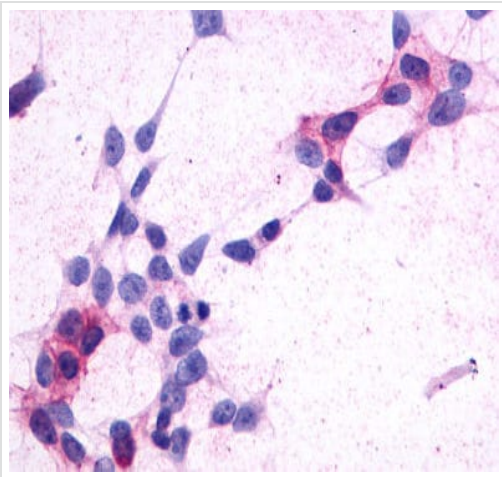
Cell membrane.

## Images



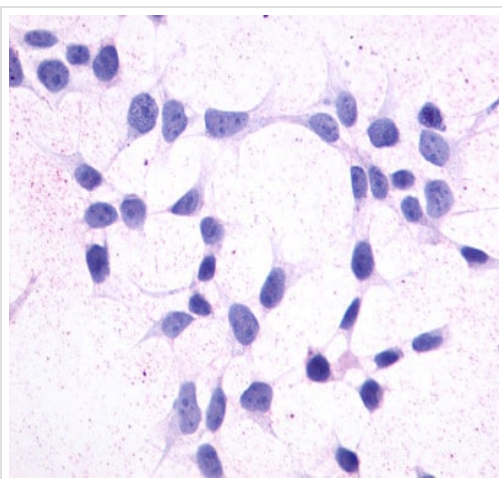
Immunohistochemical analysis of formalin-fixed, paraffin-embedded human nasal mucosa tissue (eosinophils) labeling CRTH2 with ab150632 at 32 µg/ml after heat-induced antigen retrieval.

Immunohistochemistry (Formalin/PFA-fixed paraffin-embedded sections) - Anti-CRTH2 antibody (ab150632)



Immunocytochemistry - Anti-CRTH2 antibody  
(ab150632)

Immunocytochemical analysis of HEK293 human embryonic kidney cells transfected with CRTH2, labeled with ab150632.



Immunocytochemistry - Anti-CRTH2 antibody  
(ab150632)

Immunocytochemical analysis of non-transfected HEK293 human embryonic kidney cells labeled with ab150632.

**Please note:** All products are "FOR RESEARCH USE ONLY. NOT FOR USE IN DIAGNOSTIC PROCEDURES"

### **Our Abpromise to you: Quality guaranteed and expert technical support**

---

- Replacement or refund for products not performing as stated on the datasheet
- Valid for 12 months from date of delivery
- Response to your inquiry within 24 hours
  
- We provide support in Chinese, English, French, German, Japanese and Spanish
- Extensive multi-media technical resources to help you
- We investigate all quality concerns to ensure our products perform to the highest standards

If the product does not perform as described on this datasheet, we will offer a refund or replacement. For full details of the Abpromise, please visit <https://www.abcam.com/abpromise> or contact our technical team.

## Terms and conditions

---

- Guarantee only valid for products bought direct from Abcam or one of our authorized distributors