




Product datasheet

Anti-CRYL1 antibody ab231257

3 Images

Overview

Product name	Anti-CRYL1 antibody
Description	Rabbit polyclonal to CRYL1
Host species	Rabbit
Tested applications	Suitable for: IHC-P, WB
Species reactivity	Reacts with: Mouse, Human Predicted to work with: Orangutan 
Immunogen	Recombinant fragment corresponding to Human CRYL1 aa 1-250. Expressed in E. coli. N-terminal His-tag and S-tag. Database link: Q9Y2S2  Run BLAST with  Run BLAST with
Positive control	IHC-P: Human liver tissue. WB: Recombinant human CRYL1 protein; Mouse kidney lysate.
General notes	<p>The Life Science industry has been in the grips of a reproducibility crisis for a number of years. Abcam is leading the way in addressing this with our range of recombinant monoclonal antibodies and knockout edited cell lines for gold-standard validation. Please check that this product meets your needs before purchasing.</p> <p>If you have any questions, special requirements or concerns, please send us an inquiry and/or contact our Support team ahead of purchase. Recommended alternatives for this product can be found below, along with publications, customer reviews and Q&As</p>

Properties

Form	Liquid
Storage instructions	Shipped at 4°C. Store at +4°C short term (1-2 weeks). Upon delivery aliquot. Store at -20°C long term. Avoid freeze / thaw cycle.
Storage buffer	pH: 7.40 Preservative: 0.011% Proclin 300 Constituents: 55.77% Glycerol (glycerin, glycerine), 44.219% PBS
Purity	Protein A purified
Purification notes	Antigen-specific affinity chromatography followed by Protein A affinity chromatography.
Clonality	Polyclonal
Isotype	IgG

Applications

The Abpromise guarantee

Our **Abpromise guarantee** covers the use of ab231257 in the following tested applications.

The application notes include recommended starting dilutions; optimal dilutions/concentrations should be determined by the end user.

Application	Abreviews	Notes
IHC-P		Use a concentration of 5 - 20 µg/ml.
WB		Use a concentration of 0.2 - 2 µg/ml.

Target

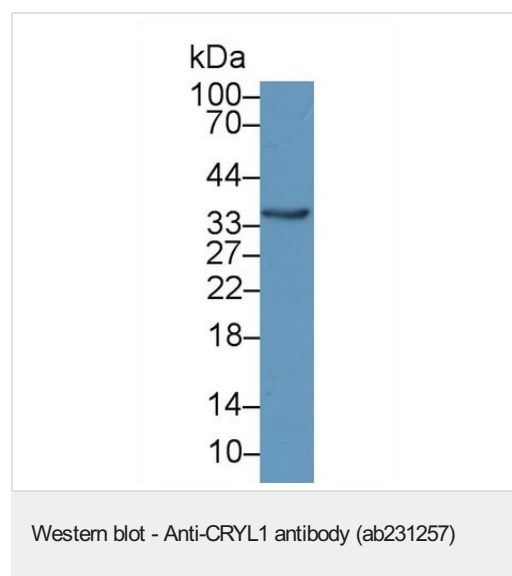
Relevance

CRYL1 is involved in the uronate cycle which functions as an alternative glucose metabolic pathway, accounting for about 5% of daily glucose catabolism. CRYL1 catalyzes the dehydrogenation of L-gulonate into dehydro-L-gulonate. The enzyme requires NAD(H) as a coenzyme, and is inhibited by inorganic phosphate.

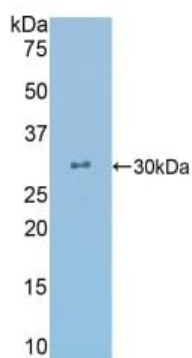
Cellular localization

Cytoplasmic

Images

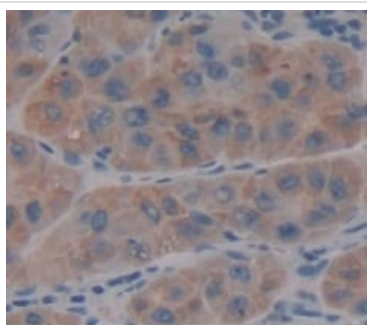


Anti-CRYL1 antibody (ab231257) at 2 µg/ml + Mouse kidney lysate



Anti-CRYL1 antibody (ab231257) at 2 µg/ml + Recombinant human CRYL1 protein

Western blot - Anti-CRYL1 antibody (ab231257)



Formalin-fixed, paraffin-embedded human liver tissue stained for CRYL1 using ab231257 at 20 µg/mL in immunohistochemical analysis.

Immunohistochemistry (Formalin/PFA-fixed paraffin-embedded sections) - Anti-CRYL1 antibody (ab231257)

Please note: All products are "FOR RESEARCH USE ONLY. NOT FOR USE IN DIAGNOSTIC PROCEDURES"

Our Abpromise to you: Quality guaranteed and expert technical support

- Replacement or refund for products not performing as stated on the datasheet
- Valid for 12 months from date of delivery
- Response to your inquiry within 24 hours
- We provide support in Chinese, English, French, German, Japanese and Spanish
- Extensive multi-media technical resources to help you

- We investigate all quality concerns to ensure our products perform to the highest standards

If the product does not perform as described on this datasheet, we will offer a refund or replacement. For full details of the Abpromise, please visit <https://www.abcam.com/abpromise> or contact our technical team.

Terms and conditions

- Guarantee only valid for products bought direct from Abcam or one of our authorized distributors