

Anti-CSAD/CSD antibody ab91016

★★★★★ [1 Abreviews](#) [7 References](#) [3 Images](#)

Overview

| | |
|----------------------------|---|
| Product name | Anti-CSAD/CSD antibody |
| Description | Rabbit polyclonal to CSAD/CSD |
| Host species | Rabbit |
| Specificity | From Jan 2024, QC testing of replenishment batches of this polyclonal changed. All tested and expected application and reactive species combinations are still covered by our Abcam product promise. However, we no longer test all applications. For more information on a specific batch, please contact our Scientific Support who will be happy to help. |
| Tested applications | Suitable for: WB, ICC/IF Unsuitable for: IHC-P |
| Species reactivity | Reacts with: Mouse, Rat |
| Immunogen | Synthetic peptide corresponding to Mouse CSAD/CSD aa 1-100 conjugated to keyhole limpet haemocyanin. (Peptide available as ab103175) |
| Positive control | WB: Mouse and rat liver and kidney tissue lysates. ICC/IF: PC-12 cells. |
| General notes | <p>The Life Science industry has been in the grips of a reproducibility crisis for a number of years. Abcam is leading the way in addressing this with our range of recombinant monoclonal antibodies and knockout edited cell lines for gold-standard validation. Please check that this product meets your needs before purchasing.</p> <p>If you have any questions, special requirements or concerns, please send us an inquiry and/or contact our Support team ahead of purchase. Recommended alternatives for this product can be found below, along with publications, customer reviews and Q&As</p> |

Properties

| | |
|--|--|
| Form | Liquid |
| Storage instructions | Shipped at 4°C. Store at +4°C short term (1-2 weeks). Upon delivery aliquot. Store at -20°C or -80°C. Avoid freeze / thaw cycle. |
| Storage buffer | pH: 7.40 Preservative: 0.02% Sodium azide Constituent: PBS |
| Batches of this product that have a concentration < 1mg/ml may have BSA added as a stabilising | |

agent. If you would like information about the formulation of a specific lot, please contact our scientific support team who will be happy to help.

| | |
|------------------|-----------------------------|
| Purity | Immunogen affinity purified |
| Clonality | Polyclonal |
| Isotype | IgG |

Applications

The Abpromise guarantee Our **Abpromise guarantee** covers the use of ab91016 in the following tested applications. The application notes include recommended starting dilutions; optimal dilutions/concentrations should be determined by the end user.

| Application | Abreviews | Notes |
|---------------|-----------|--|
| WB | ★★★★★ (1) | Use a concentration of 1 µg/ml. Detects a band of approximately 55 kDa (predicted molecular weight: 55 kDa). |
| ICC/IF | | Use a concentration of 5 µg/ml. |

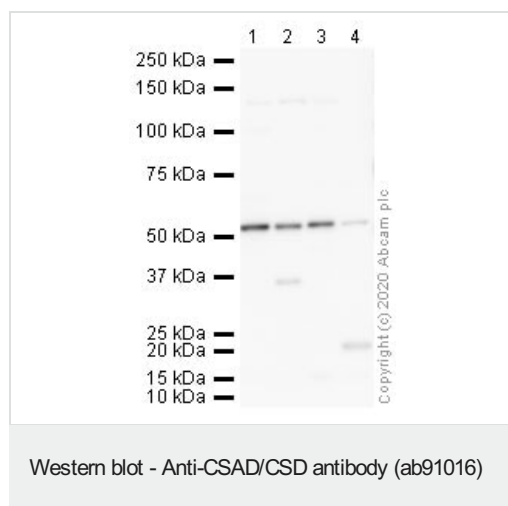
Application notes Is unsuitable for IHC-P.

Target

Pathway Organosulfur biosynthesis; taurine biosynthesis; hypotaurine from L-cysteine: step 2/2.

Sequence similarities Belongs to the group II decarboxylase family.

Images



All lanes : Anti-CSAD/CSD antibody (ab91016) at 1 µg/ml

Lane 1 : Mouse Liver lysate

Lane 2 : Mouse Kidney lysate

Lane 3 : Rat Liver lysate

Lane 4 : Rat Kidney lysate

Lysates/proteins at 10 µg per lane.

Secondary

All lanes : Goat polyclonal to Rabbit IgG - H&L - Pre-Adsorbed (HRP) at 1/50000 dilution

Developed using the ECL technique.

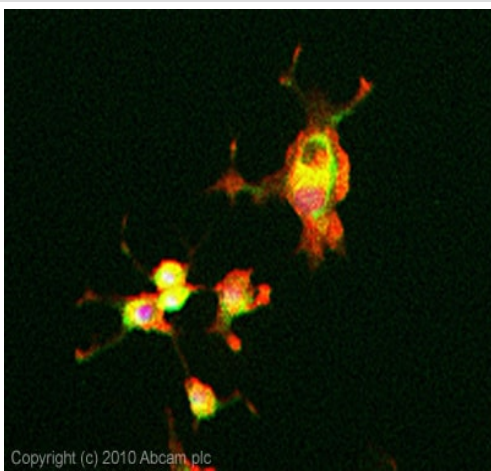
Performed under reducing conditions.

Predicted band size: 55 kDa

Observed band size: 55 kDa

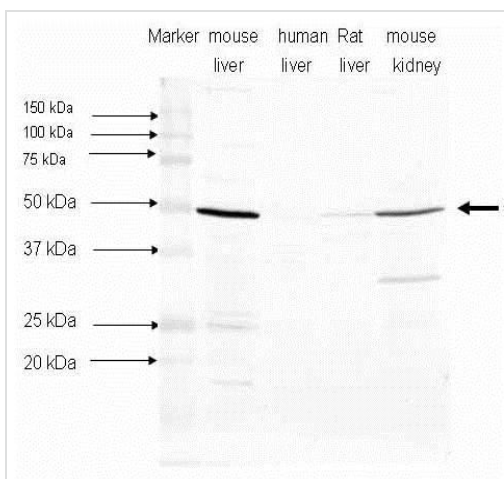
Exposure time: 2 minutes

This blot was produced using a 4-12% Bis-tris gel under the MOPS buffer system. The gel was run at 200V for 50 minutes before being transferred onto a Nitrocellulose membrane at 30V for 70 minutes. The membrane was then blocked for an hour using 2% BSA before being incubated with ab91016 overnight at 4°C. Antibody binding was visualised using ECL development solution **ab133406**.



Immunocytochemistry/ Immunofluorescence - Anti-CSAD/CSD antibody (ab91016)

ICC/IF image of ab91016 stained PC12 cells. The cells were 4% formaldehyde fixed (10 min) and then incubated in 1%BSA / 10% normal goat serum / 0.3M glycine in 0.1% PBS-Tween for 1h to permeabilise the cells and block non-specific protein-protein interactions. The cells were then incubated with the antibody ab91016 at 5µg/ml overnight at +4°C. The secondary antibody (green) was Alexa Fluor® 488 goat anti- rabbit IgG (H+L) used at a 1/1000 dilution for 1h. Alexa Fluor® 594 WGA was used to label plasma membranes (red) at a 1/200 dilution for 1h. DAPI was used to stain the cell nuclei (blue) at a concentration of 1.43µM. This antibody also gave a positive result in Methanol fixed (5min) PC12 cells at 5ug/ml.



Western blot - Anti-CSAD/CSD antibody (ab91016)

This image is courtesy of an Abreview submitted by Hua Jiang

All lanes : Anti-CSAD/CSD antibody (ab91016) at 1/1000 dilution

Lane 1 : Mouse liver tissue lysate

Lane 2 : Human liver tissue lysate

Lane 3 : Rat liver tissue lysate

Lane 4 : Mouse kidney tissue lysate

Lysates/proteins at 50 µg per lane.

Performed under reducing conditions.

Predicted band size: 55 kDa

Exposure time: 30 seconds

Please note: All products are "FOR RESEARCH USE ONLY. NOT FOR USE IN DIAGNOSTIC PROCEDURES"

Our Abpromise to you: Quality guaranteed and expert technical support

- Replacement or refund for products not performing as stated on the datasheet
- Valid for 12 months from date of delivery
- Response to your inquiry within 24 hours

- We provide support in Chinese, English, French, German, Japanese and Spanish
- Extensive multi-media technical resources to help you
- We investigate all quality concerns to ensure our products perform to the highest standards

If the product does not perform as described on this datasheet, we will offer a refund or replacement. For full details of the Abpromise, please visit <https://www.abcam.com/abpromise> or contact our technical team.

Terms and conditions

- Guarantee only valid for products bought direct from Abcam or one of our authorized distributors