

Product datasheet

Anti-CSDE1/NRU antibody [EPR17413] ab200663

Recombinant RabMAb

[1 References](#) [8 Images](#)

Overview

Product name	Anti-CSDE1/NRU antibody [EPR17413]
Description	Rabbit monoclonal [EPR17413] to CSDE1/NRU
Host species	Rabbit
Tested applications	Suitable for: WB, IP
Species reactivity	Reacts with: Mouse, Rat, Human
Immunogen	Synthetic peptide. This information is proprietary to Abcam and/or its suppliers.
Positive control	WB: K562, HeLa, MCF7, C6, RAW 264.7 and PC-12 cell lysates; Human fetal brain lysate; HeLa cytosolic fraction. IP: HeLa whole cell lysate.
General notes	<p>This product is a recombinant monoclonal antibody, which offers several advantages including:</p> <ul style="list-style-type: none"> - High batch-to-batch consistency and reproducibility - Improved sensitivity and specificity - Long-term security of supply - Animal-free production <p>For more information see here.</p> <p>Our RabMAb[®] technology is a patented hybridoma-based technology for making rabbit monoclonal antibodies. For details on our patents, please refer to RabMAb[®] patents.</p>

Properties

Form	Liquid
Storage instructions	Shipped at 4°C. Store at +4°C short term (1-2 weeks). Upon delivery aliquot. Store at -20°C long term. Avoid freeze / thaw cycle.
Storage buffer	<p>pH: 7.2</p> <p>Preservative: 0.01% Sodium azide</p> <p>Constituents: 59% PBS, 40% Glycerol (glycerin, glycerine), 0.05% BSA</p>
Purity	Protein A purified
Clonality	Monoclonal
Clone number	EPR17413
Isotype	IgG

Applications

The Abpromise guarantee

Our **Abpromise guarantee** covers the use of ab200663 in the following tested applications.

The application notes include recommended starting dilutions; optimal dilutions/concentrations should be determined by the end user.

Application	Abreviews	Notes
WB		1/1000. Detects a band of approximately 89 kDa (predicted molecular weight: 89 kDa).
IP		1/140.

Target

Function

RNA-binding protein. Required for internal initiation of translation of human rhinovirus RNA. May be involved in translationally coupled mRNA turnover. Implicated with other RNA-binding proteins in the cytoplasmic deadenylation/translational and decay interplay of the FOS mRNA mediated by the major coding-region determinant of instability (mCRD) domain.

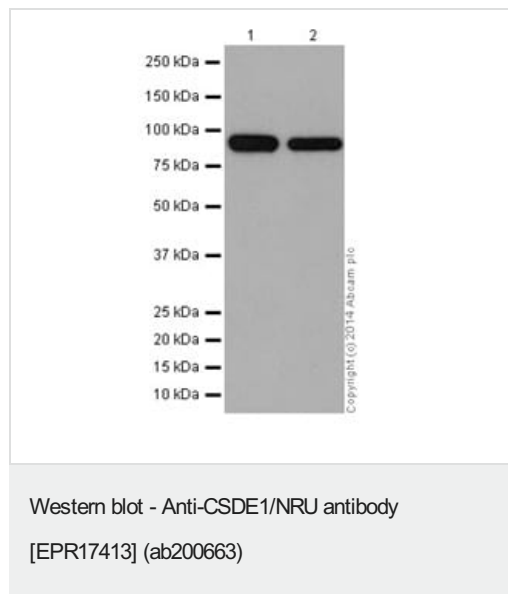
Sequence similarities

Contains 9 CSD (cold-shock) domains.

Cellular localization

Cytoplasm.

Images



All lanes : Anti-CSDE1/NRU antibody [EPR17413] (ab200663) at 1/2000 dilution

Lane 1 : K562 (Human chronic myelogenous leukemia cells from bone marrow) cell lysate

Lane 2 : HeLa (Human epithelial cells from cervix adenocarcinoma) cell lysate

Lysates/proteins at 20 µg per lane.

Secondary

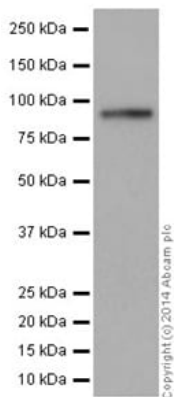
All lanes : Goat Anti-Rabbit IgG, (H+L), Peroxidase conjugated at 1/1000 dilution

Predicted band size: 89 kDa

Observed band size: 89 kDa

Exposure time: 3 minutes

Blocking/Dilution buffer: 5% NFDM/TBST.



Western blot - Anti-CSDE1/NRU antibody
[EPR17413] (ab200663)

Anti-CSDE1/NRU antibody [EPR17413] (ab200663) at 1/1000 dilution + MCF-7 (Human breast adenocarcinoma cell line) cell lysate at 20 µg

Secondary

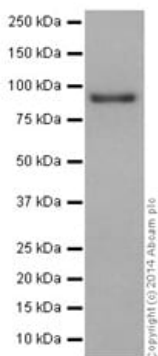
Goat Anti-Rabbit IgG, (H+L), Peroxidase conjugated at 1/1000 dilution

Predicted band size: 89 kDa

Observed band size: 89 kDa

Exposure time: 3 minutes

Blocking/Dilution buffer: 5% NFDM/TBST.



Western blot - Anti-CSDE1/NRU antibody
[EPR17413] (ab200663)

Anti-CSDE1/NRU antibody [EPR17413] (ab200663) at 1/1000 dilution + Human fetal brain tissue lysate at 10 µg

Secondary

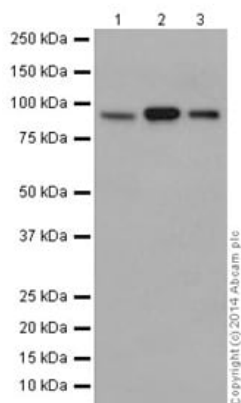
Anti-Rabbit IgG (HRP), specific to the non-reduced form of IgG at 1/1000 dilution

Predicted band size: 89 kDa

Observed band size: 89 kDa

Exposure time: 3 minutes

Blocking/Dilution buffer: 5% NFDM/TBST.



Western blot - Anti-CSDE1/NRU antibody
[EPR17413] (ab200663)

All lanes : Anti-CSDE1/NRU antibody [EPR17413] (ab200663) at 1/1000 dilution

Lane 1 : C6 (Rat glial tumor cells) cell lysate

Lane 2 : RAW 264.7 (Mouse macrophage cells transformed with Abelson murine leukemia virus) cell lysate

Lane 3 : PC-12 (Rat adrenal gland pheochromocytoma) cell lysate

Lysates/proteins at 10 µg per lane.

Secondary

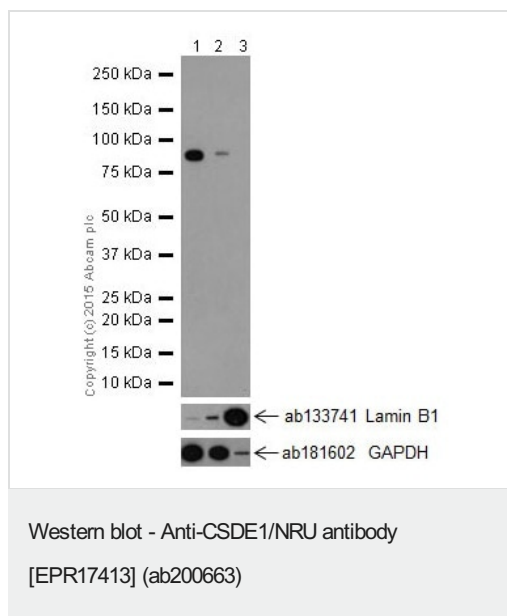
All lanes : Goat Anti-Rabbit IgG, (H+L), Peroxidase conjugated at 1/1000 dilution

Predicted band size: 89 kDa

Observed band size: 89 kDa

Exposure time: 1 minute

Blocking/Dilution buffer: 5% NFDm/TBST.



All lanes : Anti-CSDE1/NRU antibody [EPR17413] (ab200663) at 1/2000 dilution

Lane 1 : HeLa cytosolic fraction

Lane 2 : HeLa membrane (mitochondrial) fraction

Lane 3 : HeLa nuclear fraction

Lysates/proteins at 10 µg per lane.

Secondary

All lanes : Goat Anti-Rabbit IgG H&L (HRP) (**ab97051**) at 1/50000 dilution

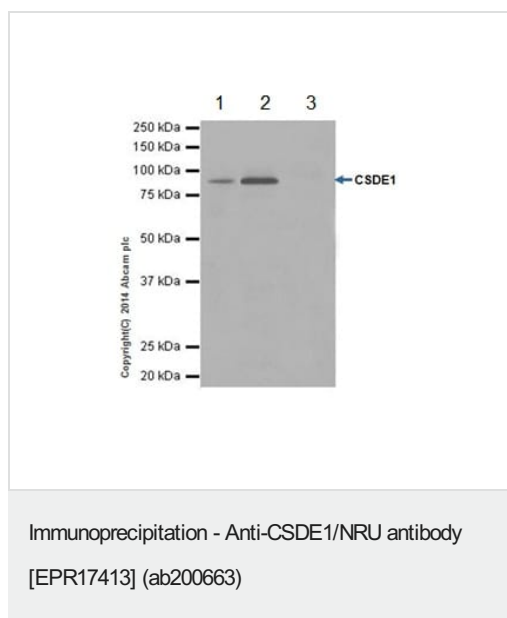
Predicted band size: 89 kDa

Observed band size: 89 kDa

Exposure time: 3 minutes

Blocking/Dilution buffer: 5% NFDM/TBST.

The HeLa cell fractions lysate set is **ab168542** from Abcam.

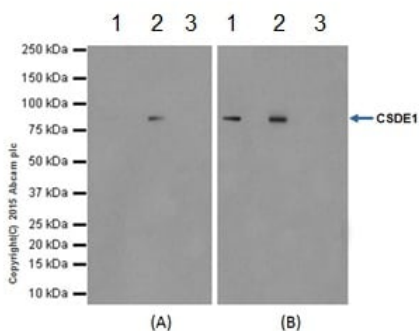


CSDE1/NRU was immunoprecipitated from 1mg of HeLa (Human epithelial cells from cervix adenocarcinoma) whole cell lysate with ab200663 at 1/140 dilution. Western blot was performed from the immunoprecipitate using ab200663 at 1/5000 dilution. Anti-Rabbit IgG (HRP), specific to the non-reduced form of IgG, was used as secondary antibody at 1/1500 dilution.

Lane 1: HeLa whole cell lysate 10ug (Input). Lane 2: ab200663 IP in HeLa whole cell lysate. Lane 3: Rabbit monoclonal IgG (**ab172730**) instead of ab200663 in HeLa whole cell lysate.

Blocking and dilution buffer and concentration: 5% NFDM/TBST.

Exposure time: 30 seconds.



Immunoprecipitation - Anti-CSDE1/NRU antibody
[EPR17413] (ab200663)

CSDE1/NRU was immunoprecipitated from 1mg of HeLa (Human epithelial cells from cervix adenocarcinoma) whole cell lysate with ab200663 at 1/140 dilution. Western blot was performed from the immunoprecipitate using ab200663 at 1/1000 dilution (Panel A) or **ab201688** at 1/1000 dilution (Panel B). VeriBlot for IP Detection Reagent (HRP) (**ab131366**), was used for detection at 1/1500 dilution.

Lane 1: HeLa whole cell lysate 10ug (Input). Lane 2: ab200663 IP in HeLa whole cell lysate. Lane 3: Rabbit monoclonal IgG (**ab172730**) instead of ab200663 in HeLa whole cell lysate.

Blocking and dilution buffer and concentration: 5% NFDm/TBST.

Exposure time: 3 min (Panel A); 10 seconds (Panel B).

Why choose a recombinant antibody?



Anti-CSDE1/NRU antibody [EPR17413] (ab200663)

Please note: All products are "FOR RESEARCH USE ONLY. NOT FOR USE IN DIAGNOSTIC PROCEDURES"

Our Abpromise to you: Quality guaranteed and expert technical support

- Replacement or refund for products not performing as stated on the datasheet
- Valid for 12 months from date of delivery
- Response to your inquiry within 24 hours
- We provide support in Chinese, English, French, German, Japanese and Spanish

- Extensive multi-media technical resources to help you
- We investigate all quality concerns to ensure our products perform to the highest standards

If the product does not perform as described on this datasheet, we will offer a refund or replacement. For full details of the Abpromise, please visit <https://www.abcam.com/abpromise> or contact our technical team.

Terms and conditions

- Guarantee only valid for products bought direct from Abcam or one of our authorized distributors