

Product datasheet

Anti-CSHL1/CSL antibody [EPR12580] α b174295

Recombinant RabMAb

[1 References](#) [3 Images](#)

Overview

Product name	Anti-CSHL1/CSL antibody [EPR12580]
Description	Rabbit monoclonal [EPR12580] to CSHL1/CSL
Host species	Rabbit
Tested applications	Suitable for: WB, IHC-P Unsuitable for: ICC/IF or IP
Species reactivity	Reacts with: Human
Immunogen	Recombinant fragment within Human CSHL1/CSL. The exact sequence is proprietary. Database link: Q14406
Positive control	Human placenta tissue and tissue lysate.
General notes	<p>This product is a recombinant monoclonal antibody, which offers several advantages including:</p> <ul style="list-style-type: none"> - High batch-to-batch consistency and reproducibility - Improved sensitivity and specificity - Long-term security of supply - Animal-free production <p>For more information see here.</p> <p>Our RabMAb[®] technology is a patented hybridoma-based technology for making rabbit monoclonal antibodies. For details on our patents, please refer to RabMAb[®] patents.</p> <p>Mouse, Rat: We have preliminary internal testing data to indicate this antibody may not react with these species. Please contact us for more information.</p>

Properties

Form	Liquid
Storage instructions	Shipped at 4°C. Store at +4°C short term (1-2 weeks). Upon delivery aliquot. Store at -20°C long term. Avoid freeze / thaw cycle.
Storage buffer	pH: 7.20 Preservative: 0.01% Sodium azide Constituents: 9% PBS, 40% Glycerol (glycerin, glycerine), 0.05% BSA, 50% Tissue culture supernatant
Purity	Protein A purified

Clonality	Monoclonal
Clone number	EPR12580
Isotype	IgG

Applications

The Abpromise guarantee Our **Abpromise guarantee** covers the use of ab174295 in the following tested applications. The application notes include recommended starting dilutions; optimal dilutions/concentrations should be determined by the end user.

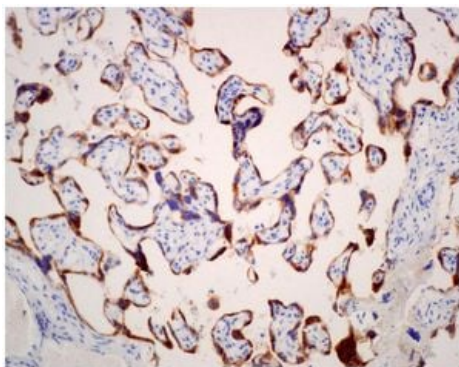
Application	Abreviews	Notes
WB		1/10000 - 1/50000. Predicted molecular weight: 25 kDa.
IHC-P		1/250 - 1/500. Perform heat mediated antigen retrieval with citrate buffer pH 6 before commencing with IHC staining protocol.

Application notes Is unsuitable for ICC/IF or IP.

Target

Function	May be a novel gestational hormone required to compensate for absence of other members of the GH/CS cluster during gestation.
Sequence similarities	Belongs to the somatotropin/prolactin family.
Cellular localization	Secreted.

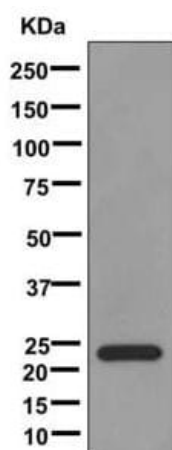
Images



Immunohistochemistry (Formalin/PFA-fixed paraffin-embedded sections) - Anti-CSHL1/CSL antibody [EPR12580] (ab174295)

Immunohistochemical analysis of paraffin-embedded Human placenta tissue labeling CSHL1/CSL with ab174295 at 1/250 dilution.

Perform heat mediated antigen retrieval with citrate buffer pH 6 before commencing with IHC staining protocol.



Western blot - Anti-CSHL1/CSL antibody
[EPR12580] (ab174295)

Anti-CSHL1/CSL antibody [EPR12580] (ab174295) at 1/10000
dilution + Human placenta lysate at 10 µg

Secondary

Goat anti-rabbit HRP at 1/2000 dilution

Predicted band size: 25 kDa

Why choose a recombinant antibody?



Research with confidence
Consistent and reproducible results



Long-term and scalable supply
Recombinant technology



Success from the first experiment
Confirmed specificity



Ethical standards compliant
Animal-free production

Anti-CSHL1/CSL antibody [EPR12580] (ab174295)

Please note: All products are "FOR RESEARCH USE ONLY. NOT FOR USE IN DIAGNOSTIC PROCEDURES"

Our Abpromise to you: Quality guaranteed and expert technical support

- Replacement or refund for products not performing as stated on the datasheet
- Valid for 12 months from date of delivery
- Response to your inquiry within 24 hours
- We provide support in Chinese, English, French, German, Japanese and Spanish
- Extensive multi-media technical resources to help you
- We investigate all quality concerns to ensure our products perform to the highest standards

If the product does not perform as described on this datasheet, we will offer a refund or replacement. For full details of the Abpromise,

please visit <https://www.abcam.com/abpromise> or contact our technical team.

Terms and conditions

- Guarantee only valid for products bought direct from Abcam or one of our authorized distributors