

Product datasheet

Anti-CSPS/STM antibody [EPR3719] ab92476

Recombinant RabMAb

[1 References](#) [2 Images](#)

Overview

Product name	Anti-CSPS/STM antibody [EPR3719]
Description	Rabbit monoclonal [EPR3719] to CSPS/STM
Host species	Rabbit
Tested applications	Suitable for: WB Unsuitable for: IHC-P or IP
Species reactivity	Reacts with: Human
Immunogen	Synthetic peptide within Human CSPS/STM aa 50-150. The exact sequence is proprietary.
Positive control	Fetal liver and HepG2 cell lysates.
General notes	<p>This product is a recombinant monoclonal antibody, which offers several advantages including:</p> <ul style="list-style-type: none"> - High batch-to-batch consistency and reproducibility - Improved sensitivity and specificity - Long-term security of supply - Animal-free production <p>For more information see here.</p> <p>Our RabMAb[®] technology is a patented hybridoma-based technology for making rabbit monoclonal antibodies. For details on our patents, please refer to RabMAb[®] patents.</p> <p>Mouse, Rat: We have preliminary internal testing data to indicate this antibody may not react with these species. Please contact us for more information.</p>

Properties

Form	Liquid
Storage instructions	Shipped at 4°C. Store at -20°C. Stable for 12 months at -20°C.
Storage buffer	<p>pH: 7.20</p> <p>Preservative: 0.05% Sodium azide</p> <p>Constituents: 0.1% BSA, 40% Glycerol (glycerin, glycerine), 9.85% Tris glycine, 50% Tissue culture supernatant</p>
Purity	Tissue culture supernatant
Clonality	Monoclonal

Clone number EPR3719
Isotype IgG

Applications

The Abpromise guarantee Our **Abpromise guarantee** covers the use of ab92476 in the following tested applications.
The application notes include recommended starting dilutions; optimal dilutions/concentrations should be determined by the end user.

Application	Abreviews	Notes
WB		

Application notes

Flow Cyt: 1/20.
ICC: 1/50 - 1/100.
WB: 1/2000 - 1/10000. Detects a band of approximately 35 kDa (predicted molecular weight: 34 kDa).

Is unsuitable for IHC-P or IP.

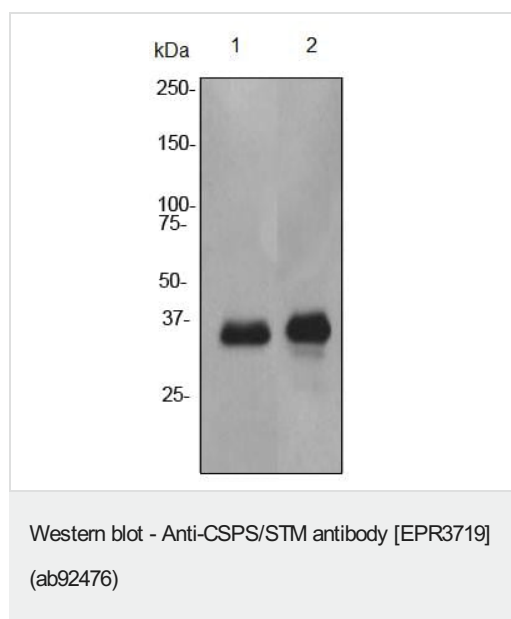
Not yet tested in other applications.
Optimal dilutions/concentrations should be determined by the end user.

Target

Relevance

Function: Catalyzes the sulfate conjugation of phenolic monoamines (neurotransmitters such as dopamine, norepinephrine and serotonin) and phenolic and catechol drugs. Tissue specificity: Liver, colon, kidney, lung, brain, spleen, small intestine, placenta and leukocyte. Similarity: Belongs to the sulfotransferase 1 family. PTM: The N-terminus is blocked.

Images



All lanes : Anti-CSPS/STM antibody [EPR3719] (ab92476) at 1/2000 dilution

Lane 1 : Fetal liver lysate

Lane 2 : HepG2 cell lysate

Lysates/proteins at 10 µg per lane.

Secondary

All lanes : HRP labelled goat anti-rabbit antibody at 1/2000 dilution

Predicted band size: 34 kDa

Why choose a recombinant antibody?



Research with confidence
Consistent and reproducible results



Long-term and scalable supply
Recombinant technology



Success from the first experiment
Confirmed specificity



Ethical standards compliant
Animal-free production

Anti-CSPS/STM antibody [EPR3719] (ab92476)

Please note: All products are "FOR RESEARCH USE ONLY. NOT FOR USE IN DIAGNOSTIC PROCEDURES"

Our Abpromise to you: Quality guaranteed and expert technical support

- Replacement or refund for products not performing as stated on the datasheet
- Valid for 12 months from date of delivery
- Response to your inquiry within 24 hours
- We provide support in Chinese, English, French, German, Japanese and Spanish
- Extensive multi-media technical resources to help you
- We investigate all quality concerns to ensure our products perform to the highest standards

If the product does not perform as described on this datasheet, we will offer a refund or replacement. For full details of the Abpromise, please visit <https://www.abcam.com/abpromise> or contact our technical team.

Terms and conditions

- Guarantee only valid for products bought direct from Abcam or one of our authorized distributors