


Anti-CSRP1 antibody ab70010

[5 References](#) [2 Images](#)

Overview

Product name	Anti-CSRP1 antibody
Description	Rabbit polyclonal to CSRP1
Host species	Rabbit
Tested applications	Suitable for: WB, IHC-P
Species reactivity	Reacts with: Human Predicted to work with: Rat 
Immunogen	Synthetic peptide (Human) from an internal region
Positive control	IHC-P: Human brain tissue. WB: HeLa, HepG2, COLO, Jurkat cells.
General notes	<p>The Life Science industry has been in the grips of a reproducibility crisis for a number of years. Abcam is leading the way in addressing this with our range of recombinant monoclonal antibodies and knockout edited cell lines for gold-standard validation. Please check that this product meets your needs before purchasing.</p> <p>If you have any questions, special requirements or concerns, please send us an inquiry and/or contact our Support team ahead of purchase. Recommended alternatives for this product can be found below, along with publications, customer reviews and Q&As</p>

Properties

Form	Liquid
Storage instructions	Shipped at 4°C. Upon delivery aliquot and store at -20°C. Avoid freeze / thaw cycles.
Storage buffer	<p>pH: 7.40</p> <p>Preservative: 0.02% Sodium azide</p> <p>Constituents: 50% Glycerol (glycerin, glycerine), 0.87% Sodium chloride, PBS</p>
Purity	Without Mg2+ and Ca2+
Clonality	Immunogen affinity purified
Isotype	Polyclonal
Isotype	IgG

Applications

The Abpromise guarantee

Our **Abpromise guarantee** covers the use of ab70010 in the following tested applications.

The application notes include recommended starting dilutions; optimal dilutions/concentrations should be determined by the end user.

Application	Abreviews	Notes
WB		1/500 - 1/1000. Detects a band of approximately 21 kDa (predicted molecular weight: 21 kDa).
IHC-P		1/50 - 1/100.

Target

Function

Could play a role in neuronal development.

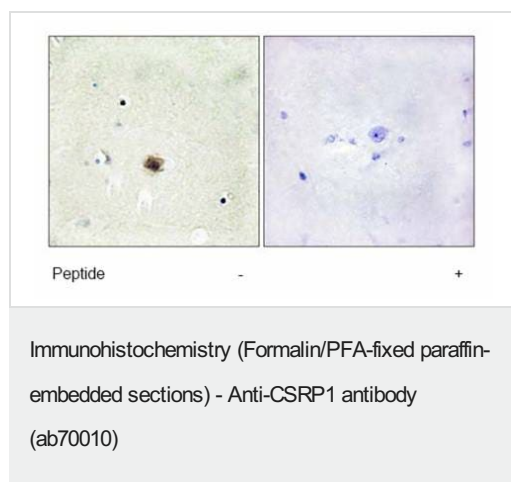
Sequence similarities

Contains 2 LIM zinc-binding domains.

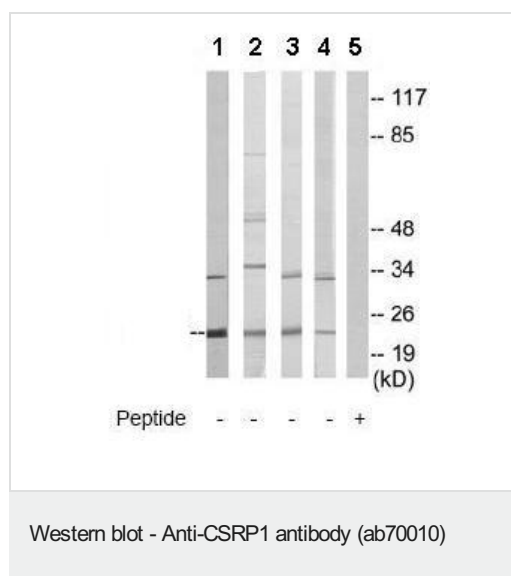
Cellular localization

Nucleus.

Images



immunohistochemical analysis of paraffin embedded human brain tissue using ab70010 at 1/50 dilution. Right panel was treated with immunising peptide.



All lanes : Anti-CSRP1 antibody (ab70010) at 1/500 dilution

Lane 1 : HeLa cell extract

Lane 2 : HepG2 cell extract

Lane 3 : COLO cell extract

Lane 4 : Jurkat cell extract

Lane 5 : HeLa cell extract with immunising peptide at 10 µg

Lysates/proteins at 30 µg per lane.

Predicted band size: 21 kDa

Observed band size: 21 kDa

Additional bands at: 33 kDa, 50 kDa, 80 kDa. We are unsure as

to the identity of these extra bands.

Please note: All products are "FOR RESEARCH USE ONLY. NOT FOR USE IN DIAGNOSTIC PROCEDURES"

Our Abpromise to you: Quality guaranteed and expert technical support

- Replacement or refund for products not performing as stated on the datasheet
- Valid for 12 months from date of delivery
- Response to your inquiry within 24 hours
- We provide support in Chinese, English, French, German, Japanese and Spanish
- Extensive multi-media technical resources to help you
- We investigate all quality concerns to ensure our products perform to the highest standards

If the product does not perform as described on this datasheet, we will offer a refund or replacement. For full details of the Abpromise, please visit <https://www.abcam.com/abpromise> or contact our technical team.

Terms and conditions

- Guarantee only valid for products bought direct from Abcam or one of our authorized distributors