




Product datasheet

Anti-CSRP2/Dlp1 antibody ab65946

★★★★★ [1 Abreviews](#) [1 References](#) [1 Image](#)

Overview

Product name	Anti-CSRP2/Dlp1 antibody
Description	Goat polyclonal to CSRP2/Dlp1
Host species	Goat
Tested applications	Suitable for: WB, IHC-P
Species reactivity	Reacts with: Mouse, Rat, Human Predicted to work with: Horse, Cow, Opossum 
Immunogen	Synthetic peptide corresponding to Human CSRP2/Dlp1 aa 86-97 (internal sequence). Sequence: C-ERLGKPEVQP <div style="text-align: right;"> Run BLAST with  Run BLAST with</div>
Positive control	Recombinant Human CSRP2/Dlp1 protein (ab126663) can be used as a positive control in WB. Human heart and kidney lysates. Mouse and rat kidney lysates.
General notes	<p>The Life Science industry has been in the grips of a reproducibility crisis for a number of years. Abcam is leading the way in addressing this with our range of recombinant monoclonal antibodies and knockout edited cell lines for gold-standard validation. Please check that this product meets your needs before purchasing.</p> <p>If you have any questions, special requirements or concerns, please send us an inquiry and/or contact our Support team ahead of purchase. Recommended alternatives for this product can be found below, along with publications, customer reviews and Q&As</p>

Properties

Form	Liquid
Storage instructions	Shipped at 4°C. Upon delivery aliquot and store at -20°C. Avoid freeze / thaw cycles.
Storage buffer	pH: 7.30 Preservative: 0.02% Sodium azide Constituents: Tris buffered saline, 0.5% BSA
Purity	Immunogen affinity purified
Purification notes	ab65946 was purified from goat serum by ammonium sulphate precipitation followed by antigen affinity chromatography using the immunizing peptide.

Clonality	Polyclonal
Isotype	IgG

Applications

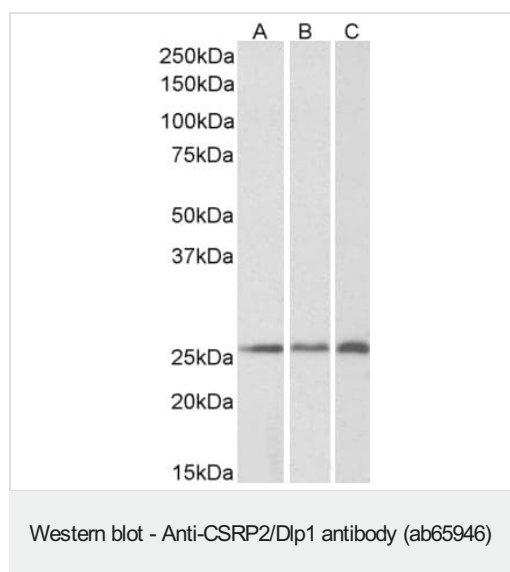
The Abpromise guarantee Our **Abpromise guarantee** covers the use of ab65946 in the following tested applications. The application notes include recommended starting dilutions; optimal dilutions/concentrations should be determined by the end user.

Application	Abreviews	Notes
WB	★★★★★ (1)	Use a concentration of 0.1 - 0.3 µg/ml. Detects a band of approximately 26 kDa (predicted molecular weight: 21 kDa). A 1 hour primary incubation is recommended for this product. Approx 26kDa band observed in Human Heart and Kidney lysates and in Mouse and Rat Kidney lysates (calculated MW of 21.0kDa according to NP_001312.1). The observed molecular weight corresponds to earlier findings in literature with different
IHC-P		Use a concentration of 3 - 6 µg/ml.

Target

Function	Drastically down-regulated in response to PDGF-BB or cell injury, that promote smooth muscle cell proliferation and dedifferentiation. Seems to play a role in the development of the embryonic vascular system.
Tissue specificity	Highly expressed in the aorta, but not in heart and skeletal muscle.
Sequence similarities	Contains 2 LIM zinc-binding domains.
Cellular localization	Nucleus.

Images



All lanes : Anti-CSRP2/Dlp1 antibody (ab65946) at 0.2 µg/ml

Lane 1 : Human kidney lysate

Lane 2 : Mouse kidney lysate

Lane 3 : Rat kidney lysate

Lysates/proteins at 35 µg per lane.

Predicted band size: 21 kDa

Please note: All products are "FOR RESEARCH USE ONLY. NOT FOR USE IN DIAGNOSTIC PROCEDURES"

Our Abpromise to you: Quality guaranteed and expert technical support

- Replacement or refund for products not performing as stated on the datasheet
- Valid for 12 months from date of delivery
- Response to your inquiry within 24 hours

- We provide support in Chinese, English, French, German, Japanese and Spanish
- Extensive multi-media technical resources to help you
- We investigate all quality concerns to ensure our products perform to the highest standards

If the product does not perform as described on this datasheet, we will offer a refund or replacement. For full details of the Abpromise, please visit <https://www.abcam.com/abpromise> or contact our technical team.

Terms and conditions

- Guarantee only valid for products bought direct from Abcam or one of our authorized distributors