


## Product datasheet

# Anti-CSRP3 antibody ab155538

★★★★★ [1 Abreviews](#) [2 Images](#)

### Overview

---

<b>Product name</b>	Anti-CSRP3 antibody
<b>Description</b>	Rabbit polyclonal to CSRP3
<b>Host species</b>	Rabbit
<b>Tested applications</b>	<b>Suitable for:</b> WB, ICC/IF
<b>Species reactivity</b>	<b>Reacts with:</b> Human <b>Predicted to work with:</b> Mouse, Rat, Pig 
<b>Immunogen</b>	Recombinant fragment, corresponding to a region within amino acids 1-194 of Human CSRP3 (UniProt ID: P50461).
<b>Positive control</b>	HeLa whole cell lysate ( <a href="#">ab150035</a> ); HeLa cells
<b>General notes</b>	<p>The Life Science industry has been in the grips of a reproducibility crisis for a number of years. Abcam is leading the way in addressing this with our range of recombinant monoclonal antibodies and knockout edited cell lines for gold-standard validation. Please check that this product meets your needs before purchasing.</p> <p>If you have any questions, special requirements or concerns, please send us an inquiry and/or contact our Support team ahead of purchase. Recommended alternatives for this product can be found below, along with publications, customer reviews and Q&amp;As</p>

### Properties

---

<b>Form</b>	Liquid
<b>Storage instructions</b>	Shipped at 4°C. Upon delivery aliquot. Store at -20°C or -80°C. Avoid freeze / thaw cycle.
<b>Storage buffer</b>	pH: 7.00 Preservative: 0.01% Thimerosal (merthiolate) Constituents: 1.21% Tris, 0.75% Glycine, 10% Glycerol (glycerin, glycerine)
<b>Purity</b>	Immunogen affinity purified
<b>Clonality</b>	Polyclonal
<b>Isotype</b>	IgG

### Applications

---

## The Abpromise guarantee

Our **Abpromise guarantee** covers the use of ab155538 in the following tested applications.

The application notes include recommended starting dilutions; optimal dilutions/concentrations should be determined by the end user.

Application	Abreviews	Notes
WB		1/500 - 1/3000. Predicted molecular weight: 21 kDa.
ICC/IF	★★★★★ (1)	1/100 - 1/1000.

## Target

### Function

Positive regulator of myogenesis. Plays a crucial and specific role in the organization of cytosolic structures in cardiomyocytes. Could play a role in mechanical stretch sensing. May be a scaffold protein that promotes the assembly of interacting proteins at Z-line structures. It is essential for calcineurin anchorage to the Z line. Required for stress-induced calcineurin-NFAT activation.

### Tissue specificity

Cardiac and slow-twitch skeletal muscles.

### Involvement in disease

Defects in CSRP3 are the cause of cardiomyopathy dilated type 1M (CMD1M) [MIM:607482]. Dilated cardiomyopathy is a disorder characterized by ventricular dilation and impaired systolic function, resulting in congestive heart failure and arrhythmia. Patients are at risk of premature death.

Defects in CSRP3 are the cause of cardiomyopathy familial hypertrophic type 12 (CMH12) [MIM:612124]. Familial hypertrophic cardiomyopathy is a hereditary heart disorder characterized by ventricular hypertrophy, which is usually asymmetric and often involves the interventricular septum. The symptoms include dyspnea, syncope, collapse, palpitations, and chest pain. They can be readily provoked by exercise. The disorder has inter- and intrafamilial variability ranging from benign to malignant forms with high risk of cardiac failure and sudden cardiac death.

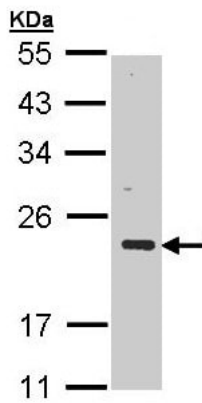
### Sequence similarities

Contains 2 LIM zinc-binding domains.

### Cellular localization

Nucleus. Cytoplasm. Cytoplasm > cytoskeleton. Cytoplasm > myofibril > sarcomere > Z line. Mainly cytoplasmic (By similarity). In the nucleus it associates with the actin cytoskeleton (Potential). In the Z line, found associated with GLRX3.

## Images

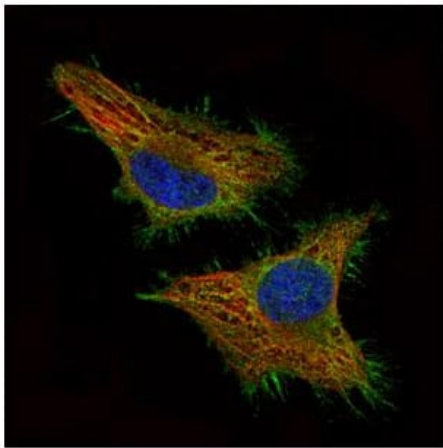


Anti-CSR3 antibody (ab155538) at 1/1000 dilution + HeLa whole cell lysate at 30 µg

**Predicted band size:** 21 kDa

12% SDS PAGE

Western blot - Anti-CSR3 antibody (ab155538)



Confocal immunofluorescence analysis of paraformaldehyde fixed HeLa cells, labeling CSR3 using ab155538 at 1/500 dilution (green) and alpha tubulin filaments (red).

Immunocytochemistry/ Immunofluorescence - Anti-CSR3 antibody (ab155538)

**Please note:** All products are "FOR RESEARCH USE ONLY. NOT FOR USE IN DIAGNOSTIC PROCEDURES"

### Our Abpromise to you: Quality guaranteed and expert technical support

- Replacement or refund for products not performing as stated on the datasheet
- Valid for 12 months from date of delivery
- Response to your inquiry within 24 hours
- We provide support in Chinese, English, French, German, Japanese and Spanish
- Extensive multi-media technical resources to help you
- We investigate all quality concerns to ensure our products perform to the highest standards

If the product does not perform as described on this datasheet, we will offer a refund or replacement. For full details of the Abpromise, please visit <https://www.abcam.com/abpromise> or contact our technical team.

## Terms and conditions

---

- Guarantee only valid for products bought direct from Abcam or one of our authorized distributors