

Product datasheet

Anti-CST6 antibody ab201088

1 Image

Overview

Product name	Anti-CST6 antibody
Description	Rabbit polyclonal to CST6
Host species	Rabbit
Tested applications	Suitable for: WB
Species reactivity	Reacts with: Rat, Human
Immunogen	Synthetic peptide corresponding to Human CST6 aa 1-100. Database link: Q15828 Run BLAST with Run BLAST with
Positive control	HEK293T and PC12 whole cell lysates.
General notes	<p>The Life Science industry has been in the grips of a reproducibility crisis for a number of years. Abcam is leading the way in addressing this with our range of recombinant monoclonal antibodies and knockout edited cell lines for gold-standard validation. Please check that this product meets your needs before purchasing.</p> <p>If you have any questions, special requirements or concerns, please send us an inquiry and/or contact our Support team ahead of purchase. Recommended alternatives for this product can be found below, along with publications, customer reviews and Q&As</p>

Properties

Form	Liquid
Storage instructions	Shipped at 4°C. Store at +4°C short term (1-2 weeks). Upon delivery aliquot. Store at -20°C long term. Avoid freeze / thaw cycle.
Storage buffer	pH: 7.30 Preservative: 0.05% Sodium azide Constituent: 99% PBS
Purity	Immunogen affinity purified
Purification notes	ab201088 was affinity-purified from rabbit antiserum by affinity-chromatography using epitope-specific immunogen and the purity of is > 95% (by SDS-PAGE).
Clonality	Polyclonal
Isotype	IgG

Applications

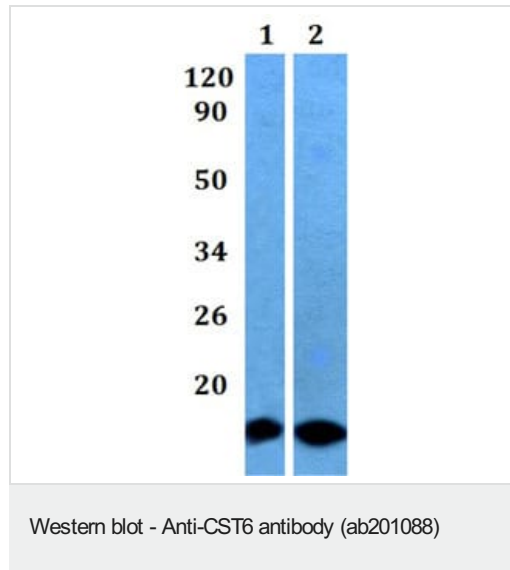
The Abpromise guarantee Our **Abpromise guarantee** covers the use of ab201088 in the following tested applications. The application notes include recommended starting dilutions; optimal dilutions/concentrations should be determined by the end user.

Application	Abreviews	Notes
WB		1/500 - 1/1000. Predicted molecular weight: 17 kDa.

Target

Function	Shows moderate inhibition of cathepsin B but is not active against cathepsin C.
Tissue specificity	Restricted to the stratum granulosum of normal skin, the stratum granulosum/spinosum of psoriatic skin, and the secretory coils of eccrine sweat glands. Low expression levels are found in the nasal cavity.
Sequence similarities	Belongs to the cystatin family.
Post-translational modifications	Substrate for transglutaminases. Acts as an acyl acceptor but not as an acyl donor.
Cellular localization	Secreted.

Images



All lanes : Anti-CST6 antibody (ab201088)

Lane 1 : HEK293T whole cell lysate

Lane 2 : PC12 whole cell lysate

Predicted band size: 17 kDa

Please note: All products are "FOR RESEARCH USE ONLY. NOT FOR USE IN DIAGNOSTIC PROCEDURES"

Our Abpromise to you: Quality guaranteed and expert technical support

- Replacement or refund for products not performing as stated on the datasheet
- Valid for 12 months from date of delivery
- Response to your inquiry within 24 hours

- We provide support in Chinese, English, French, German, Japanese and Spanish
- Extensive multi-media technical resources to help you
- We investigate all quality concerns to ensure our products perform to the highest standards

If the product does not perform as described on this datasheet, we will offer a refund or replacement. For full details of the Abpromise, please visit <https://www.abcam.com/abpromise> or contact our technical team.

Terms and conditions

- Guarantee only valid for products bought direct from Abcam or one of our authorized distributors