


Product datasheet

Anti-CSTF3 antibody ab74407

2 Images

Overview

Product name	Anti-CSTF3 antibody
Description	Rabbit polyclonal to CSTF3
Host species	Rabbit
Tested applications	Suitable for: IHC-P
Species reactivity	Reacts with: Mouse, Human Predicted to work with: Rat, Rabbit, Horse, Chicken, Guinea pig, Cow, Dog, Turkey, Chimpanzee, Rhesus monkey, Gorilla, Orangutan, Platypus 
Immunogen	Synthetic peptide within Human CSTF3 aa 650 to the C-terminus. The exact immunogen sequence used to generate this antibody is proprietary information. If additional detail on the immunogen is needed to determine the suitability of the antibody for your needs, please contact our Scientific Support team to discuss your requirements. NP_001317.1 Database link: Q12996
Positive control	Human prostate carcinoma and mouse teratoma tissue. Other suitable positive controls are: Breast Carcinoma, Colon Carcinoma, Linitis Plastica Stomach Cancer, Non-Small Cell Lung Cancer, Ovarian Carcinoma, Pancreatic Islet Cell Tumor, Small Cell Lung Cancer, Stomach Adenocarcinoma and Testicular Seminoma tissues.
General notes	<p>The Life Science industry has been in the grips of a reproducibility crisis for a number of years. Abcam is leading the way in addressing this with our range of recombinant monoclonal antibodies and knockout edited cell lines for gold-standard validation. Please check that this product meets your needs before purchasing.</p> <p>If you have any questions, special requirements or concerns, please send us an inquiry and/or contact our Support team ahead of purchase. Recommended alternatives for this product can be found below, along with publications, customer reviews and Q&As</p>

Properties

Form	Liquid
Storage instructions	Shipped at 4°C. Upon delivery aliquot and store at -20°C. Avoid freeze / thaw cycles.
Storage buffer	pH: 6.8 Preservative: 0.09% Sodium azide Constituents: 0.1% BSA, Tris buffered saline

Purity	Immunogen affinity purified
Purification notes	ab74407 was affinity purified using an epitope specific to CSTF3 immobilized on solid support.
Clonality	Polyclonal
Isotype	IgG

Applications

The Abpromise guarantee Our **Abpromise guarantee** covers the use of ab74407 in the following tested applications.
The application notes include recommended starting dilutions; optimal dilutions/concentrations should be determined by the end user.

Application	Abreviews	Notes
IHC-P		

Application notes

IHC-P: 1/100 - 1/500.
Epitope exposure is recommended.
Epitope exposure with citrate buffer will enhance staining.
ab74407 is likely to work with frozen sections.

Not yet tested in other applications.
Optimal dilutions/concentrations should be determined by the end user.

Target

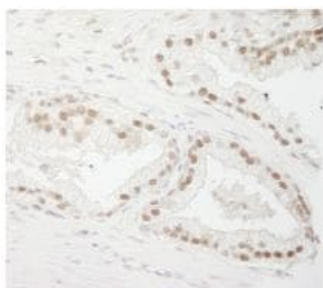
Relevance

CSTF3 (cleavage stimulation factor subunit 3) is required for polyadenylation and 3'-end cleavage of mammalian pre-mRNAs and is part of the CSTF complex. The CSTF complex is composed of CSTF1 (50 kDa subunit), CSTF2 (64 kDa subunit) and CSTF3 (77 kDa subunit). CSTF3 functions as a homodimer and interacts directly with CSTF1 and CSTF2.

Cellular localization

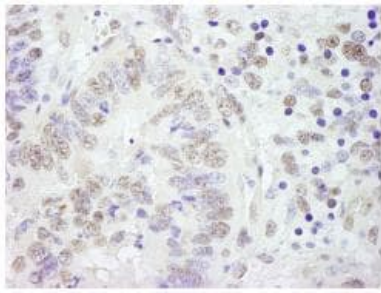
Nuclear

Images



ab74407, at 1/250 dilution, staining CSTF3 in formalin fixed, paraffin embedded human prostate carcinoma tissue by Immunohistochemistry. Detection: DAB staining.

Immunohistochemistry (Formalin/PFA-fixed paraffin-embedded sections) - Anti-CSTF3 antibody (ab74407)



ab74407, at 1/250 dilution, staining CSTF3 in formalin fixed, paraffin embedded mouse teratoma tissue by Immunohistochemistry. Detection: DAB staining.

Immunohistochemistry (Formalin/PFA-fixed paraffin-embedded sections) - Anti-CSTF3 antibody (ab74407)

Please note: All products are "FOR RESEARCH USE ONLY. NOT FOR USE IN DIAGNOSTIC PROCEDURES"

Our Abpromise to you: Quality guaranteed and expert technical support

- Replacement or refund for products not performing as stated on the datasheet
- Valid for 12 months from date of delivery
- Response to your inquiry within 24 hours
- We provide support in Chinese, English, French, German, Japanese and Spanish
- Extensive multi-media technical resources to help you
- We investigate all quality concerns to ensure our products perform to the highest standards

If the product does not perform as described on this datasheet, we will offer a refund or replacement. For full details of the Abpromise, please visit <https://www.abcam.com/abpromise> or contact our technical team.

Terms and conditions

- Guarantee only valid for products bought direct from Abcam or one of our authorized distributors