

Product datasheet

Anti-CT A antibody [EPR3940(2)] ab109263

Recombinant RabMAb

[9 References](#) [9 Images](#)

Overview

Product name	Anti-CT A antibody [EPR3940(2)]
Description	Rabbit monoclonal [EPR3940(2)] to CT A
Host species	Rabbit
Tested applications	Suitable for: WB, IHC-P, ICC/IF Unsuitable for: Flow Cyt or IP
Species reactivity	Reacts with: Mouse, Human
Immunogen	Synthetic peptide. This information is proprietary to Abcam and/or its suppliers.
Positive control	WB: HeLa, HepG2, A549, K562 , Mouse brain, and RAW 264.7 lysates. IHC-P: human colon, human prostatic hyperplasia tissue and mouse pancreas tissues. ICC/IF: HeLa cells.
General notes	<p>This product is a recombinant monoclonal antibody, which offers several advantages including:</p> <ul style="list-style-type: none"> - High batch-to-batch consistency and reproducibility - Improved sensitivity and specificity - Long-term security of supply - Animal-free production <p>For more information see here.</p> <p>Our RabMAb[®] technology is a patented hybridoma-based technology for making rabbit monoclonal antibodies. For details on our patents, please refer to RabMAb[®] patents.</p> <p>Rat: We have preliminary internal testing data to indicate this antibody may not react with this species. Please contact us for more information.</p>

Properties

Form	Liquid
Storage instructions	Shipped at 4°C. Store at -20°C. Stable for 12 months at -20°C.
Storage buffer	pH: 7.20 Preservative: 0.01% Sodium azide Constituents: 59% PBS, 40% Glycerol (glycerin, glycerine), 0.05% BSA
Purity	Protein A purified
Clonality	Monoclonal

Clone number EPR3940(2)

Isotype IgG

Applications

The Abpromise guarantee Our **Abpromise guarantee** covers the use of ab109263 in the following tested applications. The application notes include recommended starting dilutions; optimal dilutions/concentrations should be determined by the end user.

Application	Abreviews	Notes
WB		1/1000 - 1/10000. Predicted molecular weight: 42 kDa.
IHC-P		1/500 - 1/1000. Perform heat mediated antigen retrieval before commencing with IHC staining protocol. 1:500 in human tissues / 1:1000 in mouse tissues See <u>IHC antigen retrieval protocols</u> .
ICC/IF		1/50.

Application notes Is unsuitable for Flow Cyt or IP.

Target

Function Controls phosphatidylcholine synthesis.

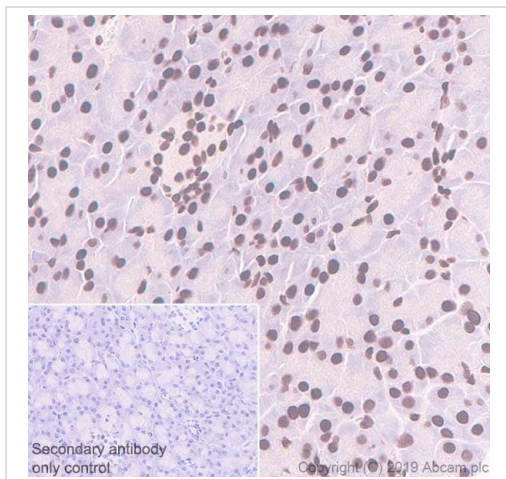
Pathway Phospholipid metabolism; phosphatidylcholine biosynthesis; phosphatidylcholine from phosphocholine: step 1/2.

Sequence similarities Belongs to the cytidyltransferase family.

Post-translational modifications The serine residues of the C-terminus are phosphorylated. The inactive soluble form is stabilized by phosphorylation, the active membrane bound form is promoted by anionic lipids or diacylglycerol, and is stabilized by dephosphorylation.

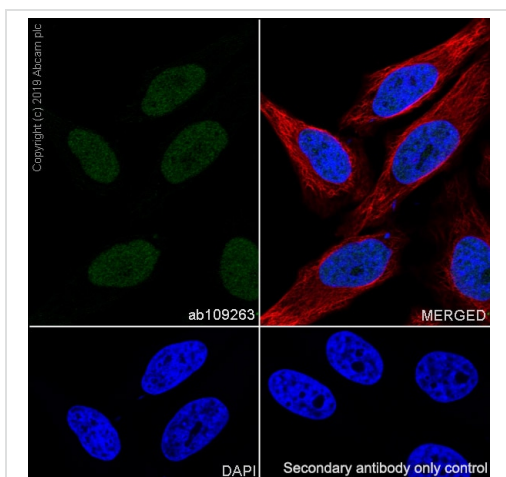
Cellular localization Cytoplasm > cytosol. Membrane. It can interconvert between an inactive cytosolic form and an active membrane-bound form.

Images



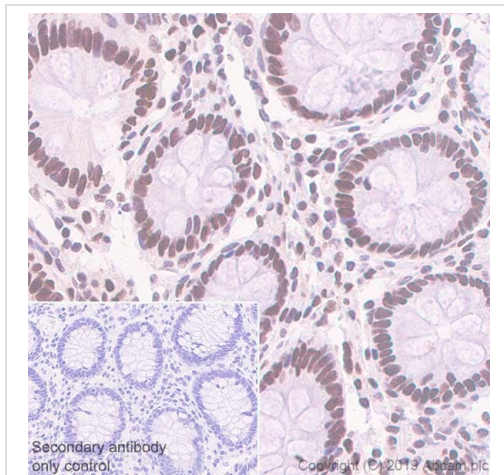
Immunohistochemistry (Formalin/PFA-fixed paraffin-embedded sections) - Anti-CT A antibody [EPR3940(2)] (ab109263)

Immunohistochemistry (Formalin/PFA-fixed paraffin-embedded sections) analysis of mouse pancreas tissue sections labeling CT A with Purified ab109263 at 1:1000 dilution (0.53 µg/ml). Perform heat mediated antigen retrieval using **ab93684** (Tris/EDTA buffer, pH 9.0). Purified ImmunoHistoProbe one step HRP Polymer (ready to use) was used for detection. Negative control: PBS instead of the primary antibody. Hematoxylin was used as a counterstain.



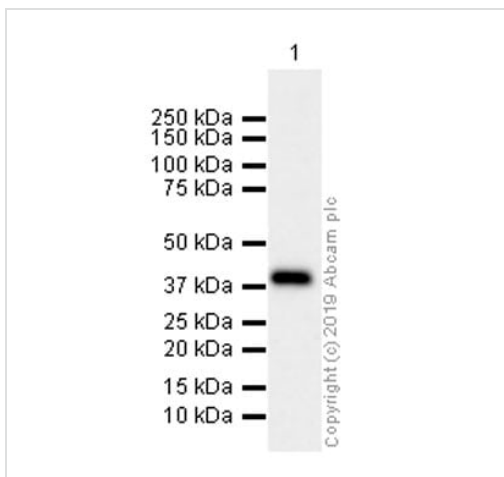
Immunocytochemistry/ Immunofluorescence - Anti-CT A antibody [EPR3940(2)] (ab109263)

Immunocytochemistry/ Immunofluorescence analysis of HeLa (Human cervix adenocarcinoma epithelial cell) cells labeling CT A with Purified ab109263 at 1:50 dilution (10 µg/ml). Cells were fixed in 4% Paraformaldehyde and permeabilized with 0.1% tritonX-100. Cells were counterstained with Ab195889 Anti-alpha Tubulin antibody [DM1A] - Microtubule Marker (Alexa Fluor® 594) 1:200 (2.5 µg/ml). Goat anti rabbit IgG (Alexa Fluor® 488, **ab150077**) was used as the secondary antibody at 1:1000 (2 µg/ml) dilution. DAPI (blue) was used as nuclear counterstain. PBS instead of the primary antibody was used as the secondary antibody only control.



Immunohistochemistry (Formalin/PFA-fixed paraffin-embedded sections) - Anti-CT A antibody [EPR3940(2)] (ab109263)

Immunohistochemistry (Formalin/PFA-fixed paraffin-embedded sections) analysis of human colon tissue sections labeling CT A with Purified ab109263 at 1:500 dilution (1.06 µg/ml). Perform heat mediated antigen retrieval using [ab93684](#) (Tris/EDTA buffer, pH 9.0). Purified ImmunoHistoProbe one step HRP Polymer (ready to use) was used for detection. Negative control: PBS instead of the primary antibody. Hematoxylin was used as a counterstain.



Western blot - Anti-CT A antibody [EPR3940(2)] (ab109263)

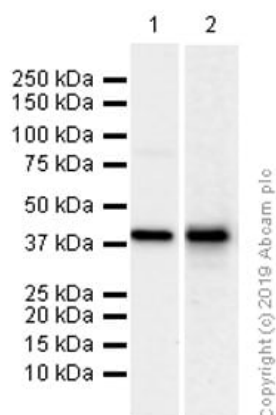
Anti-CT A antibody [EPR3940(2)] (ab109263) at 1/5000 dilution (Purified) + RAW 264.7 (Mouse Abelson murine leukemia virus-induced tumor macrophage) whole cell lysates at 20 µg

Secondary

Goat Anti-Rabbit IgG H&L (HRP) ([ab97051](#)) at 1/20000 dilution

Predicted band size: 42 kDa

Observed band size: 42 kDa



Western blot - Anti-CT A antibody [EPR3940(2)]
(ab109263)

All lanes : Anti-CT A antibody [EPR3940(2)] (ab109263) at 1/5000 dilution (Purified)

Lane 1 : HeLa (Human cervix adenocarcinoma epithelial cell) whole cell lysates

Lane 2 : Mouse brain lysates

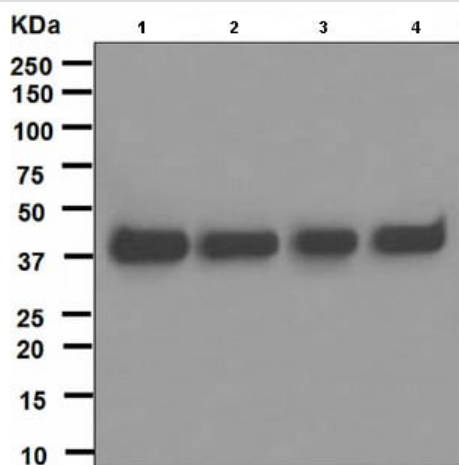
Lysates/proteins at 15 µg per lane.

Secondary

All lanes : Goat Anti-Rabbit IgG H&L (HRP) ([ab97051](#)) at 1/20000 dilution

Predicted band size: 42 kDa

Observed band size: 42 kDa



Western blot - Anti-CT A antibody [EPR3940(2)]
(ab109263)

All lanes : Anti-CT A antibody [EPR3940(2)] (ab109263) at 1/1000 dilution

Lane 1 : HepG2 cell lysate

Lane 2 : HeLa cell lysate

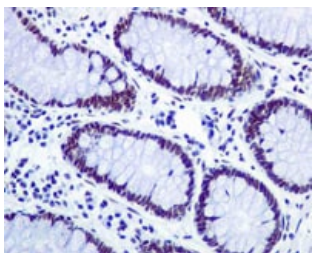
Lane 3 : A549 cell lysate

Lane 4 : K562 cell lysate

Lysates/proteins at 10 µg per lane.

Predicted band size: 42 kDa

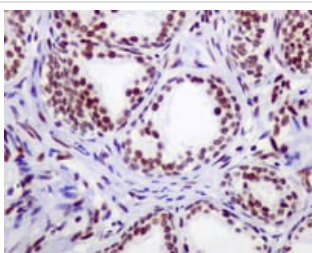
Observed band size: 42 kDa



Immunohistochemistry (Formalin/PFA-fixed paraffin-embedded sections) - Anti-CT A antibody [EPR3940(2)] (ab109263)

ab109263, at a 1/50 dilution, staining CT A in paraffin embedded Human colon tissue by Immunohistochemistry.

Perform heat mediated antigen retrieval before commencing with IHC staining protocol.



Immunohistochemistry (Formalin/PFA-fixed paraffin-embedded sections) - Anti-CT A antibody [EPR3940(2)] (ab109263)

ab109263, at a 1/50 dilution, staining CT A in paraffin embedded Human prostatic hyperplasia by Immunohistochemistry.

Perform heat mediated antigen retrieval before commencing with IHC staining protocol.

Why choose a recombinant antibody?



Research with confidence
Consistent and reproducible results



Long-term and scalable supply
Recombinant technology



Success from the first experiment
Confirmed specificity



Ethical standards compliant
Animal-free production

Anti-CT A antibody [EPR3940(2)] (ab109263)

Please note: All products are "FOR RESEARCH USE ONLY. NOT FOR USE IN DIAGNOSTIC PROCEDURES"

Our Abpromise to you: Quality guaranteed and expert technical support

- Replacement or refund for products not performing as stated on the datasheet

- Valid for 12 months from date of delivery
- Response to your inquiry within 24 hours
- We provide support in Chinese, English, French, German, Japanese and Spanish
- Extensive multi-media technical resources to help you
- We investigate all quality concerns to ensure our products perform to the highest standards

If the product does not perform as described on this datasheet, we will offer a refund or replacement. For full details of the Abpromise, please visit <https://www.abcam.com/abpromise> or contact our technical team.

Terms and conditions

- Guarantee only valid for products bought direct from Abcam or one of our authorized distributors