

## Product datasheet

# Anti-CT A antibody [EPR3941] ab92440

Recombinant RabMAb

★★★★☆ [1 Abreviews](#) [3 Images](#)

### Overview

---

<b>Product name</b>	Anti-CT A antibody [EPR3941]
<b>Description</b>	Rabbit monoclonal [EPR3941] to CT A
<b>Host species</b>	Rabbit
<b>Tested applications</b>	<b>Suitable for:</b> WB, ICC/IF <b>Unsuitable for:</b> IHC-P
<b>Species reactivity</b>	<b>Reacts with:</b> Human
<b>Immunogen</b>	Synthetic peptide. This information is proprietary to Abcam and/or its suppliers.
<b>Positive control</b>	A549, K562, HeLa and HepG2 cell lysates; HeLa cells
<b>General notes</b>	<p>This product is a recombinant monoclonal antibody, which offers several advantages including:</p> <ul style="list-style-type: none"><li>- High batch-to-batch consistency and reproducibility</li><li>- Improved sensitivity and specificity</li><li>- Long-term security of supply</li><li>- Animal-free production</li></ul> <p>For more information <a href="#">see here</a>.</p> <p>Our RabMAb<sup>®</sup> technology is a patented hybridoma-based technology for making rabbit monoclonal antibodies. For details on our patents, please refer to <a href="#">RabMAb<sup>®</sup> patents</a>.</p> <p>Mouse, Rat: We have preliminary internal testing data to indicate this antibody may not react with these species. Please contact us for more information.</p>

### Properties

---

<b>Form</b>	Liquid
<b>Storage instructions</b>	Shipped at 4°C. Store at -20°C. Stable for 12 months at -20°C.
<b>Storage buffer</b>	pH: 7.20 Preservative: 0.05% Sodium azide Constituents: 0.1% BSA, 40% Glycerol (glycerin, glycerine), 9.85% Tris glycine, 50% Tissue culture supernatant
<b>Purity</b>	Tissue culture supernatant
<b>Clonality</b>	Monoclonal

Clone number                   EPR3941  
Isotype                            IgG

## Applications

**The Abpromise guarantee**           Our **Abpromise guarantee** covers the use of ab92440 in the following tested applications. The application notes include recommended starting dilutions; optimal dilutions/concentrations should be determined by the end user.

Application	Abreviews	Notes
WB	★ ★ ★ ☆ ☆ (1)	
ICC/IF		

**Application notes**                   Flow Cyt: 1/500 - 1/1000.  
  ICC/IF: 1/100 - 1/250.  
  IP: 1/10 - 1/100.  
  WB: 1/1000 - 1/10000. Predicted molecular weight: 42 kDa.

  Is unsuitable for IHC-P.

  Not yet tested in other applications.  
  Optimal dilutions/concentrations should be determined by the end user.

## Target

**Function**                                Controls phosphatidylcholine synthesis.

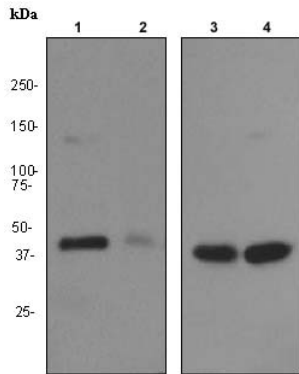
**Pathway**                                Phospholipid metabolism; phosphatidylcholine biosynthesis; phosphatidylcholine from phosphocholine: step 1/2.

**Sequence similarities**                Belongs to the cytidyltransferase family.

**Post-translational modifications**   The serine residues of the C-terminus are phosphorylated. The inactive soluble form is stabilized by phosphorylation, the active membrane bound form is promoted by anionic lipids or diacylglycerol, and is stabilized by dephosphorylation.

**Cellular localization**                Cytoplasm > cytosol. Membrane. It can interconvert between an inactive cytosolic form and an active membrane-bound form.

## Images



Western blot - Anti-CT A antibody [EPR3941]  
(ab92440)

**All lanes** : Anti-CT A antibody [EPR3941] (ab92440) at 1/1000 dilution

**Lane 1** : A549 cell lysate

**Lane 2** : K562 cell lysate

**Lane 3** : HeLa cell lysate

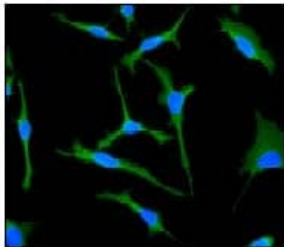
**Lane 4** : HepG2 cell lysate

Lysates/proteins at 10 µg per lane.

### Secondary

**All lanes** : HRP labelled goat anti-rabbit at 1/2000 dilution

**Predicted band size:** 42 kDa



Immunocytochemistry/ Immunofluorescence - Anti-CT A antibody [EPR3941] (ab92440)

ab92440, at 1/100 dilution, staining CT A in HeLa cells by Immunofluorescence.

Why choose a recombinant antibody?

**Research with confidence**  
Consistent and reproducible results

**Long-term and scalable supply**  
Recombinant technology

**Success from the first experiment**  
Confirmed specificity

**Ethical standards compliant**  
Animal-free production

Anti-CT A antibody [EPR3941] (ab92440)

**Please note:** All products are "FOR RESEARCH USE ONLY. NOT FOR USE IN DIAGNOSTIC PROCEDURES"

### Our Abpromise to you: Quality guaranteed and expert technical support

---

- Replacement or refund for products not performing as stated on the datasheet
- Valid for 12 months from date of delivery
- Response to your inquiry within 24 hours
- We provide support in Chinese, English, French, German, Japanese and Spanish
- Extensive multi-media technical resources to help you
- We investigate all quality concerns to ensure our products perform to the highest standards

If the product does not perform as described on this datasheet, we will offer a refund or replacement. For full details of the Abpromise, please visit <https://www.abcam.com/abpromise> or contact our technical team.

### Terms and conditions

---

- Guarantee only valid for products bought direct from Abcam or one of our authorized distributors