

Anti-CT A antibody [EPR3941] - BSA and Azide free ab247553

Recombinant RabMAb

3 Images

Overview

Product name	Anti-CT A antibody [EPR3941] - BSA and Azide free
Description	Rabbit monoclonal [EPR3941] to CT A - BSA and Azide free
Host species	Rabbit
Tested applications	Suitable for: WB, ICC/IF Unsuitable for: IHC-P
Species reactivity	Reacts with: Human
Immunogen	Synthetic peptide. This information is proprietary to Abcam and/or its suppliers.
General notes	<p>ab247553 is the carrier-free version of ab92440.</p> <p>Our carrier-free antibodies are typically supplied in a PBS-only formulation, purified and free of BSA, sodium azide and glycerol. The carrier-free buffer and high concentration allow for increased conjugation efficiency.</p> <p>This conjugation-ready format is designed for use with fluorochromes, metal isotopes, oligonucleotides, and enzymes, which makes them ideal for antibody labelling, functional and cell-based assays, flow-based assays (e.g. mass cytometry) and Multiplex Imaging applications.</p> <p>Use our conjugation kits for antibody conjugates that are ready-to-use in as little as 20 minutes with <1 minute hands-on-time and 100% antibody recovery: available for fluorescent dyes, HRP, biotin and gold.</p> <p>This product is compatible with the Maxpar[®] Antibody Labeling Kit from Fluidigm, without the need for antibody preparation. Maxpar[®] is a trademark of Fluidigm Canada Inc.</p> <p>This product is a recombinant monoclonal antibody, which offers several advantages including:</p> <ul style="list-style-type: none"> - High batch-to-batch consistency and reproducibility - Improved sensitivity and specificity - Long-term security of supply - Animal-free production <p>For more information see here.</p> <p>Our RabMAb[®] technology is a patented hybridoma-based technology for making rabbit monoclonal antibodies. For details on our patents, please refer to RabMAb[®] patents.</p> <p>Mouse, Rat: We have preliminary internal testing data to indicate this antibody may not react with</p>

these species. Please contact us for more information.

Properties

Form	Liquid
Storage instructions	Shipped at 4°C. Store at +4°C. Do Not Freeze.
Storage buffer	pH: 7.2 Constituent: PBS
Carrier free	Yes
Purity	Affinity purified
Clonality	Monoclonal
Clone number	EPR3941
Isotype	IgG

Applications

The Abpromise guarantee Our **Abpromise guarantee** covers the use of ab247553 in the following tested applications. The application notes include recommended starting dilutions; optimal dilutions/concentrations should be determined by the end user.

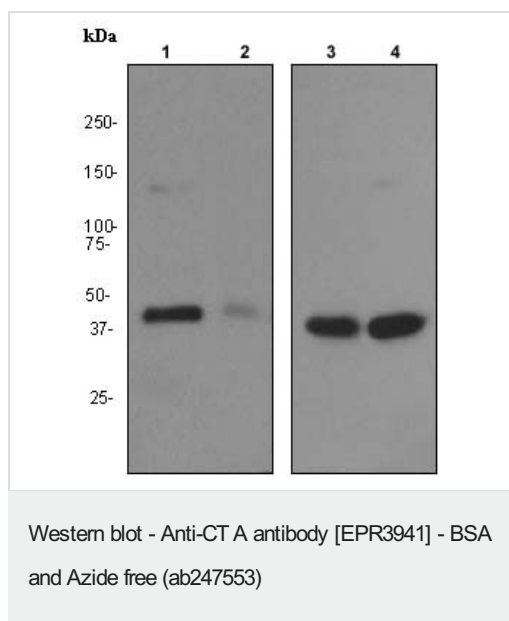
Application	Abreviews	Notes
WB		Use at an assay dependent concentration. Predicted molecular weight: 42 kDa.
ICC/IF		Use at an assay dependent concentration.

Application notes Is unsuitable for IHC-P.

Target

Function	Controls phosphatidylcholine synthesis.
Pathway	Phospholipid metabolism; phosphatidylcholine biosynthesis; phosphatidylcholine from phosphocholine: step 1/2.
Sequence similarities	Belongs to the cytidyltransferase family.
Post-translational modifications	The serine residues of the C-terminus are phosphorylated. The inactive soluble form is stabilized by phosphorylation, the active membrane bound form is promoted by anionic lipids or diacylglycerol, and is stabilized by dephosphorylation.
Cellular localization	Cytoplasm > cytosol. Membrane. It can interconvert between an inactive cytosolic form and an active membrane-bound form.

Images



All lanes : Anti-CT A antibody [EPR3941] ([ab92440](#)) at 1/1000 dilution

Lane 1 : A549 cell lysate

Lane 2 : K562 cell lysate

Lane 3 : HeLa cell lysate

Lane 4 : HepG2 cell lysate

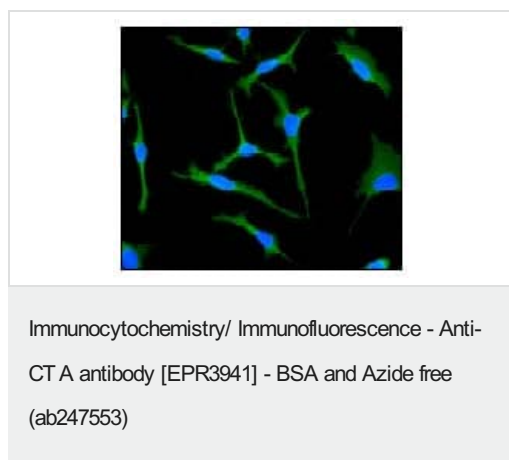
Lysates/proteins at 10 µg per lane.

Secondary

All lanes : HRP labelled goat anti-rabbit at 1/2000 dilution

Predicted band size: 42 kDa

This data was developed using [ab92440](#), the same antibody clone in a different buffer formulation.



This data was developed using [ab92440](#), the same antibody clone in a different buffer formulation. [ab92440](#), at 1/100 dilution, staining CT A in HeLa cells by Immunofluorescence.

Why choose a recombinant antibody?



Research with confidence
Consistent and reproducible results



Long-term and scalable supply
Recombinant technology



Success from the first experiment
Confirmed specificity



Ethical standards compliant
Animal-free production

Anti-CT A antibody [EPR3941] - BSA and Azide free
(ab247553)

Please note: All products are "FOR RESEARCH USE ONLY. NOT FOR USE IN DIAGNOSTIC PROCEDURES"

Our Abpromise to you: Quality guaranteed and expert technical support

- Replacement or refund for products not performing as stated on the datasheet
- Valid for 12 months from date of delivery
- Response to your inquiry within 24 hours
- We provide support in Chinese, English, French, German, Japanese and Spanish
- Extensive multi-media technical resources to help you
- We investigate all quality concerns to ensure our products perform to the highest standards

If the product does not perform as described on this datasheet, we will offer a refund or replacement. For full details of the Abpromise, please visit <https://www.abcam.com/abpromise> or contact our technical team.

Terms and conditions

- Guarantee only valid for products bought direct from Abcam or one of our authorized distributors