

Product datasheet

Anti-CTC1 antibody ab230538

[2 References](#) [3 Images](#)

Overview

Product name	Anti-CTC1 antibody
Description	Rabbit polyclonal to CTC1
Host species	Rabbit
Tested applications	Suitable for: IHC-P, WB, Flow Cyt (Intra)
Species reactivity	Reacts with: Human
Immunogen	Synthetic peptide corresponding to Human CTC1 aa 767-795 (internal sequence) conjugated to keyhole limpet haemocyanin. Database link: Q2NKJ3
Positive control	WB: K562 whole cell lysate. IHC-P: Human kidney tissue. Flow Cyt (Intra): K562 cells.
General notes	<p>The Life Science industry has been in the grips of a reproducibility crisis for a number of years. Abcam is leading the way in addressing this with our range of recombinant monoclonal antibodies and knockout edited cell lines for gold-standard validation. Please check that this product meets your needs before purchasing.</p> <p>If you have any questions, special requirements or concerns, please send us an inquiry and/or contact our Support team ahead of purchase. Recommended alternatives for this product can be found below, along with publications, customer reviews and Q&As</p>

Properties

Form	Liquid
Storage instructions	Shipped at 4°C. Store at +4°C short term (1-2 weeks). Upon delivery aliquot. Store at -20°C long term. Avoid freeze / thaw cycle.
Storage buffer	pH: 7.4 Preservative: 0.09% Sodium azide Constituent: PBS
Purity	Protein A purified
Clonality	Polyclonal
Isotype	IgG

Applications

The Abpromise guarantee

Our **Abpromise guarantee** covers the use of ab230538 in the following tested applications.

The application notes include recommended starting dilutions; optimal dilutions/concentrations should be determined by the end user.

Application	Abreviews	Notes
IHC-P		1/50. Perform heat mediated antigen retrieval before commencing with IHC staining protocol.
WB		1/1000. Predicted molecular weight: 135 kDa.
Flow Cyt (Intra)		1/10 - 1/50.

Target

Function

Component of the CST complex, a complex that binds to single-stranded DNA and is required to protect telomeres from DNA degradation. The CST complex binds single-stranded DNA with high affinity in a sequence-independent manner, while isolated subunits bind DNA with low affinity by themselves. In addition to telomere protection, the CST complex has probably a more general role in DNA metabolism at non-telomeric sites.

Involvement in disease

Cerebroretinal microangiopathy with calcifications and cysts

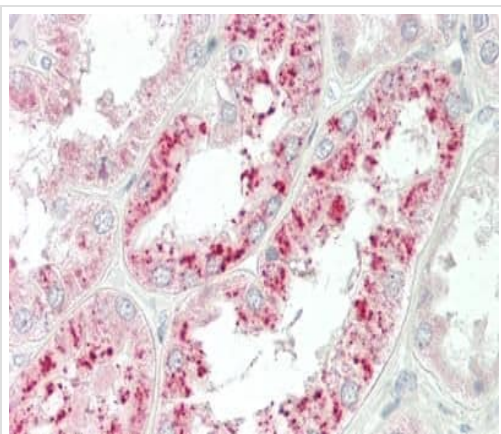
Sequence similarities

Belongs to the CTC1 family.

Cellular localization

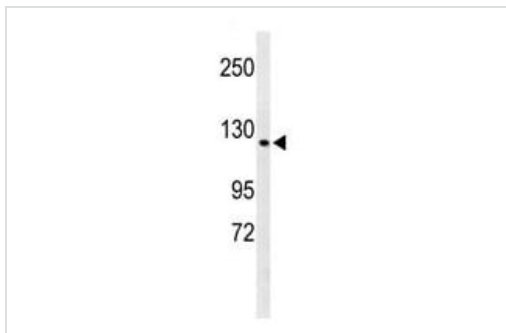
Nucleus. Chromosome > telomere. A transmembrane region is predicted by sequence analysis tools (ESKW, MEMSAT and Phobius); however, given the telomeric localization of the protein, the relevance of the transmembrane region is unsure in vivo.

Images



Formalin-fixed, paraffin-embedded human kidney tissue stained for CTC1 using ab230538 at 1/50 dilution in immunohistochemical analysis.

Immunohistochemistry (Formalin/PFA-fixed paraffin-embedded sections) - Anti-CTC1 antibody (ab230538)

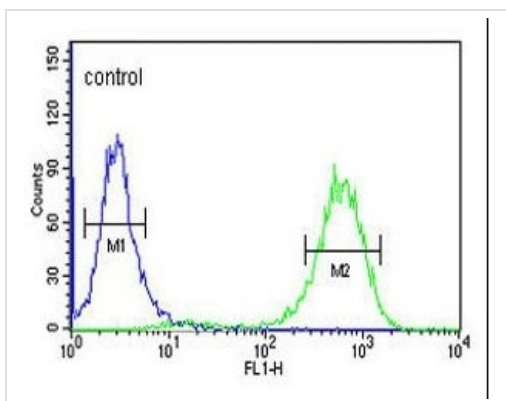


Western blot - Anti-CTC1 antibody (ab230538)

Anti-CTC1 antibody (ab230538) at 1/1000 dilution + K562 (human chronic myelogenous leukemia cell line from bone marrow) whole cell lysate at 35 µg

Developed using the ECL technique.

Predicted band size: 135 kDa



Flow Cytometry (Intracellular) - Anti-CTC1 antibody (ab230538)

Intracellular flow cytometric analysis of K562 (human chronic myelogenous leukemia cell line from bone marrow) cell line labeling CTC1 with ab230538 at 1/10 dilution (green) compared with a negative control (blue). FITC-conjugated goat-anti-rabbit secondary antibodies were used for the analysis.

Please note: All products are "FOR RESEARCH USE ONLY. NOT FOR USE IN DIAGNOSTIC PROCEDURES"

Our Abpromise to you: Quality guaranteed and expert technical support

- Replacement or refund for products not performing as stated on the datasheet
- Valid for 12 months from date of delivery
- Response to your inquiry within 24 hours
- We provide support in Chinese, English, French, German, Japanese and Spanish
- Extensive multi-media technical resources to help you
- We investigate all quality concerns to ensure our products perform to the highest standards

If the product does not perform as described on this datasheet, we will offer a refund or replacement. For full details of the Abpromise, please visit <https://www.abcam.com/abpromise> or contact our technical team.

Terms and conditions

- Guarantee only valid for products bought direct from Abcam or one of our authorized distributors