

Anti-CTHRC1 antibody ab264410

[1 References](#) [2 Images](#)

Overview

Product name	Anti-CTHRC1 antibody
Description	Rabbit polyclonal to CTHRC1
Host species	Rabbit
Tested applications	Suitable for: IP, WB
Species reactivity	Reacts with: Human
Immunogen	Synthetic peptide within Human CTHRC1 aa 25-75. The exact sequence is proprietary. Database link: Q96CG8
Positive control	WB: UACC-62 whole cell lysate. IP: UACC-62 whole cell lysate.
General notes	<p>The Life Science industry has been in the grips of a reproducibility crisis for a number of years. Abcam is leading the way in addressing this with our range of recombinant monoclonal antibodies and knockout edited cell lines for gold-standard validation. Please check that this product meets your needs before purchasing.</p> <p>If you have any questions, special requirements or concerns, please send us an inquiry and/or contact our Support team ahead of purchase. Recommended alternatives for this product can be found below, along with publications, customer reviews and Q&As</p>

Properties

Form	Liquid
Storage instructions	Shipped at 4°C. Store at +4°C short term (1-2 weeks). Upon delivery aliquot. Store at -20°C long term. Avoid freeze / thaw cycle.
Storage buffer	pH: 6.8 Preservative: 0.09% Sodium azide Constituents: Tris buffered saline, 0.1% BSA
Purity	Immunogen affinity purified
Clonality	Polyclonal
Isotype	IgG

Applications

The Abpromise guarantee

Our **Abpromise guarantee** covers the use of ab264410 in the following tested applications.

The application notes include recommended starting dilutions; optimal dilutions/concentrations should be determined by the end user.

Application	Abreviews	Notes
IP		Use at an assay dependent concentration. Use 50-100 µl/mg lysate.
WB		1/1000. Predicted molecular weight: 26 kDa.

Target

Function

May act as a negative regulator of collagen matrix deposition.

Tissue specificity

Isoform 1 is expressed in calcified atherosclerotic plaque and chondrocyte-like cells.

Sequence similarities

Contains 1 collagen-like domain.

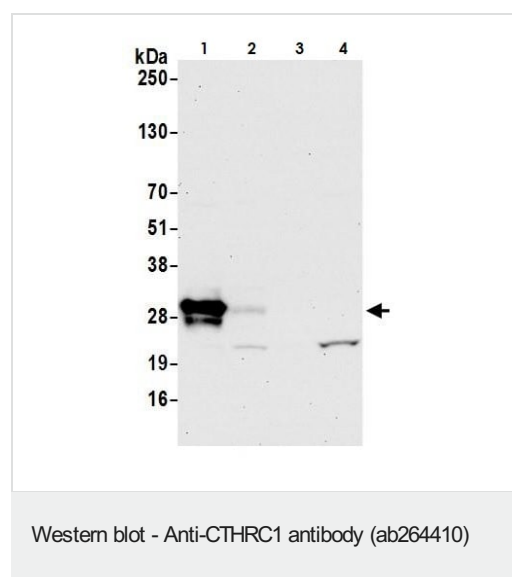
Post-translational modifications

N-glycosylated.

Cellular localization

Secreted > extracellular space > extracellular matrix.

Images



All lanes : Anti-CTHRC1 antibody (ab264410) at 1/1000 dilution

Lane 1 : UACC-62 whole cell lysate

Lane 2 : MALME-3M whole cell lysate

Lane 3 : SR whole cell lysate

Lane 4 : HeLa (human epithelial cell line from cervix adenocarcinoma) whole cell lysate

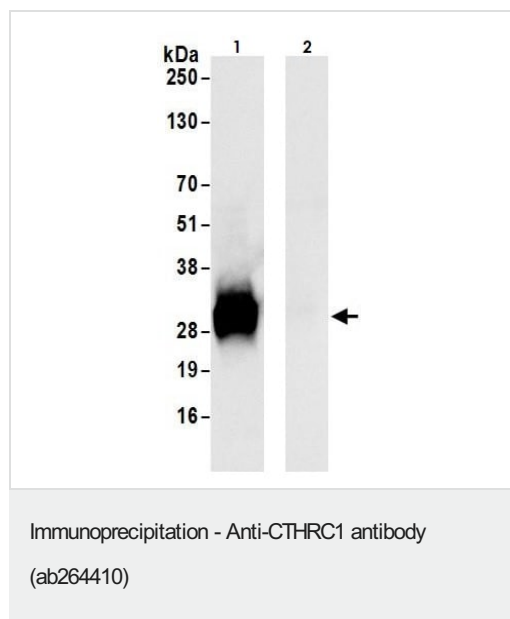
Lysates/proteins at 50 µg per lane.

Developed using the ECL technique.

Predicted band size: 26 kDa

Exposure time: 10 seconds

Lysates prepared using NETN lysis buffer.



CTHRC1 was immunoprecipitated from UACC-62 whole cell lysate (1.0 mg per IP reaction; 20% of IP loaded) with ab264410 at 100 μ l per reaction. Western blot was performed from the immunoprecipitate using an alternative anti-CTHRC1 antibody

Lane 1: ab264410 IP in UACC-62 whole cell lysate.

Lane 2: Control IgG IP in UACC-62 whole cell lysate.

Detection: Chemiluminescence with an exposure time of 1 second.

Lysates prepared using NETN lysis buffer.

Please note: All products are "FOR RESEARCH USE ONLY. NOT FOR USE IN DIAGNOSTIC PROCEDURES"

Our Abpromise to you: Quality guaranteed and expert technical support

- Replacement or refund for products not performing as stated on the datasheet
- Valid for 12 months from date of delivery
- Response to your inquiry within 24 hours
- We provide support in Chinese, English, French, German, Japanese and Spanish
- Extensive multi-media technical resources to help you
- We investigate all quality concerns to ensure our products perform to the highest standards

If the product does not perform as described on this datasheet, we will offer a refund or replacement. For full details of the Abpromise, please visit <https://www.abcam.com/abpromise> or contact our technical team.

Terms and conditions

- Guarantee only valid for products bought direct from Abcam or one of our authorized distributors