

Product datasheet

Anti-Ctip2 antibody [1F8G8] ab233713

★★★★☆ [3 Abreviews](#) [7 Images](#)

Overview

Product name	Anti-Ctip2 antibody [1F8G8]
Description	Mouse monoclonal [1F8G8] to Ctip2
Host species	Mouse
Tested applications	Suitable for: WB, IHC-P, Flow Cyt, ICC/IF
Species reactivity	Reacts with: Human
Immunogen	Recombinant fragment corresponding to Human Ctip2 aa 1-150. (Expressed in E.coli). Database link: Q9C0K0
Positive control	WB: Recombinant human Ctip2 (aa1-150) protein; Ctip2 (aa1-150)-hlgG-Fc-transfected HEK-293 cell lysate. ICC/IF: HeLa cells. Flow cyt: HeLa and Jurkat cells. IHC-P: Human colon cancer and stomach cancer tissues.
General notes	<p>The Life Science industry has been in the grips of a reproducibility crisis for a number of years. Abcam is leading the way in addressing this with our range of recombinant monoclonal antibodies and knockout edited cell lines for gold-standard validation. Please check that this product meets your needs before purchasing.</p> <p>If you have any questions, special requirements or concerns, please send us an inquiry and/or contact our Support team ahead of purchase. Recommended alternatives for this product can be found below, along with publications, customer reviews and Q&As</p>

Properties

Form	Liquid
Storage instructions	Shipped at 4°C. Store at +4°C short term (1-2 weeks). Upon delivery aliquot. Store at -20°C long term. Avoid freeze / thaw cycle.
Storage buffer	Preservative: 0.05% Sodium azide Constituent: PBS
Purity	Protein G purified
Purification notes	Purified from tissue culture supernatant.
Clonality	Monoclonal
Clone number	1F8G8
Isotype	IgG1

Applications

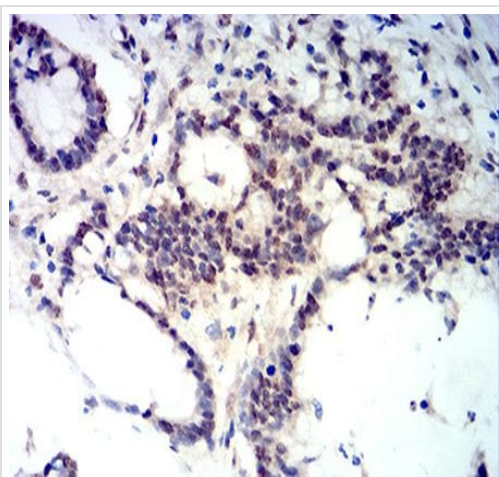
The Abpromise guarantee Our **Abpromise guarantee** covers the use of ab233713 in the following tested applications. The application notes include recommended starting dilutions; optimal dilutions/concentrations should be determined by the end user.

Application	Abreviews	Notes
WB		1/500 - 1/2000. Predicted molecular weight: 96 kDa.
IHC-P		1/200 - 1/1000.
Flow Cyt		1/200 - 1/400.
ICC/IF		1/50 - 1/250.

Target

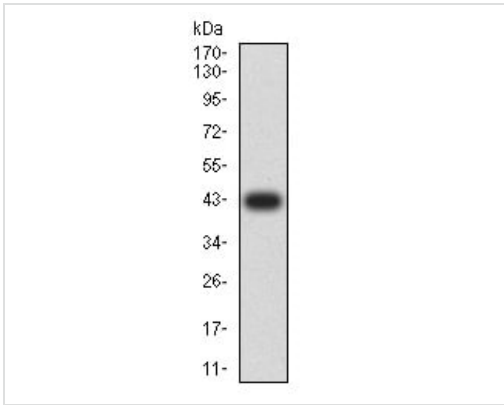
Function	Tumor-suppressor protein involved in T-cell lymphomas. May function on the P53-signaling pathway. May be a key regulator of both differentiation and survival during thymocyte development. Repress transcription through direct, TFCOUP2-independent binding to a GC-rich response element.
Tissue specificity	Highly expressed in brain and in malignant T-cell lines derived from patients with adult T-cell leukemia/lymphoma.
Sequence similarities	Contains 6 C2H2-type zinc fingers.
Cellular localization	Nucleus.

Images



Paraffin-embedded human colon cancer tissue stained for Ctip2 using ab233713 at 1/200 dilution in immunohistochemical analysis. DAB staining.

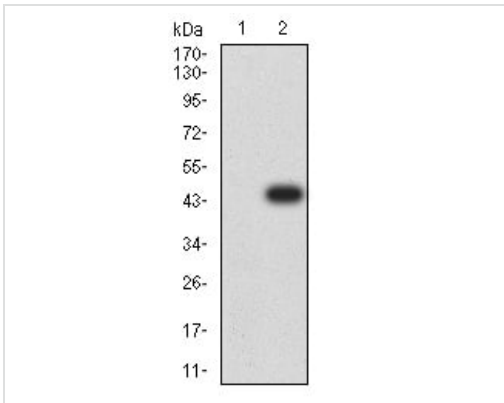
Immunohistochemistry (Formalin/PFA-fixed paraffin-embedded sections) - Anti-Ctip2 antibody [1F8G8] (ab233713)



Western blot - Anti-Ctip2 antibody [1F8G8]
(ab233713)

Anti-Ctip2 antibody [1F8G8] (ab233713) at 1/500 dilution +
Recombinant human Ctip2 (aa1-150) protein

Predicted band size: 96 kDa



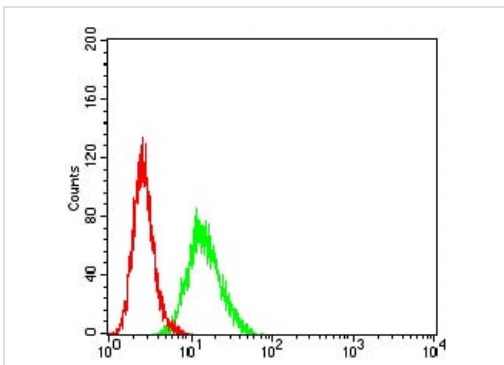
Western blot - Anti-Ctip2 antibody [1F8G8]
(ab233713)

All lanes : Anti-Ctip2 antibody [1F8G8] (ab233713) at 1/500
dilution

Lane 1 : Non-transfected HEK-293 (human epithelial cell line from
embryonic kidney) cell lysate

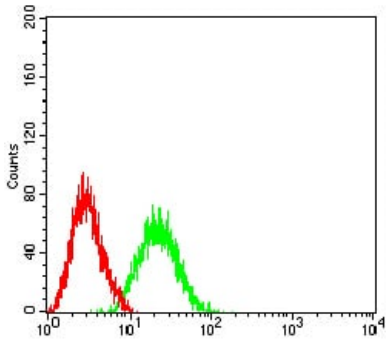
Lane 2 : Ctip2 (aa1-150)-hlgG-Fc-transfected HEK-293 cell lysate

Predicted band size: 96 kDa



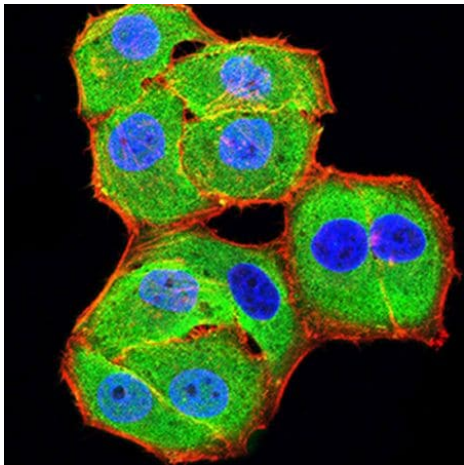
Flow Cytometry - Anti-Ctip2 antibody [1F8G8]
(ab233713)

Flow cytometric analysis of HeLa (human epithelial cell line from
cervix adenocarcinoma) cells labeling Ctip2 with ab233713 at
1/200 dilution (green) compared with a negative control (red).



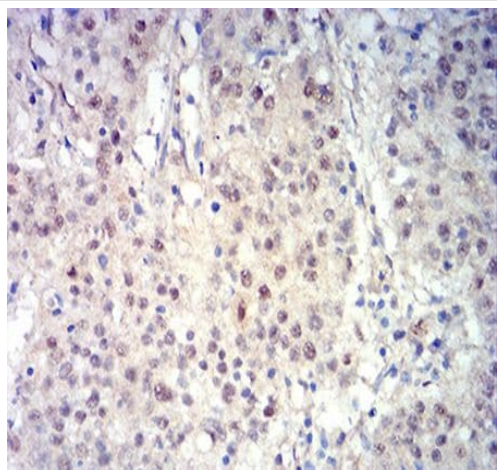
Flow Cytometry - Anti-Ctip2 antibody [1F8G8]
(ab233713)

Flow cytometric analysis of Jurkat (human T cell leukemia cell line from peripheral blood) cells labeling Ctip2 with ab233713 at 1/200 dilution (green) compared with a negative control (red).



Immunocytochemistry/ Immunofluorescence - Anti-Ctip2 antibody [1F8G8] (ab233713)

HeLa (human epithelial cell line from cervix adenocarcinoma) cells stained for Ctip2 (green) using ab233713 at 1/50 dilution in ICC/IF. Actin is stained with AlexaFluor[®]555-Phalloidin (red). Blue: DRAQ5 DNA dye.



Paraffin-embedded human stomach cancer tissue stained for Ctip2 using ab233713 at 1/200 dilution in immunohistochemical analysis. DAB staining.

Immunohistochemistry (Formalin/PFA-fixed paraffin-embedded sections) - Anti-Ctip2 antibody [1F8G8] (ab233713)

Please note: All products are "FOR RESEARCH USE ONLY. NOT FOR USE IN DIAGNOSTIC PROCEDURES"

Our Abpromise to you: Quality guaranteed and expert technical support

- Replacement or refund for products not performing as stated on the datasheet
- Valid for 12 months from date of delivery
- Response to your inquiry within 24 hours
- We provide support in Chinese, English, French, German, Japanese and Spanish
- Extensive multi-media technical resources to help you
- We investigate all quality concerns to ensure our products perform to the highest standards

If the product does not perform as described on this datasheet, we will offer a refund or replacement. For full details of the Abpromise, please visit <https://www.abcam.com/abpromise> or contact our technical team.

Terms and conditions

- Guarantee only valid for products bought direct from Abcam or one of our authorized distributors