

Product datasheet

Anti-CTPS2 antibody - C-terminal ab190462

[2 Images](#)

Overview

Product name	Anti-CTPS2 antibody - C-terminal
Description	Rabbit polyclonal to CTPS2 - C-terminal
Host species	Rabbit
Tested applications	Suitable for: WB, IP
Species reactivity	Reacts with: Human Predicted to work with: Horse, Cat, Dog, Chimpanzee, Rhesus monkey, Gorilla, Orangutan



Immunogen	Synthetic peptide within Human CTPS2 aa 500 to the C-terminus (C terminal). The exact immunogen sequence used to generate this antibody is proprietary information. If additional detail on the immunogen is needed to determine the suitability of the antibody for your needs, please contact our Scientific Support team to discuss your requirements. Database link: Q9NRF8
------------------	---

 [Run BLAST with](#)

 [Run BLAST with](#)

Positive control	HeLa and 293T cell lysate.
-------------------------	----------------------------

General notes	The Life Science industry has been in the grips of a reproducibility crisis for a number of years. Abcam is leading the way in addressing this with our range of recombinant monoclonal antibodies and knockout edited cell lines for gold-standard validation. Please check that this product meets your needs before purchasing.
----------------------	--

If you have any questions, special requirements or concerns, please send us an inquiry and/or contact our Support team ahead of purchase. Recommended alternatives for this product can be found below, along with publications, customer reviews and Q&As

Properties

Form	Liquid
Storage instructions	Shipped at 4°C. Store at +4°C short term (1-2 weeks). Upon delivery aliquot. Store at -20°C long term. Avoid freeze / thaw cycle.
Storage buffer	pH: 7 Preservative: 0.09% Sodium azide Constituent: 99% Tris citrate/phosphate pH: 7 to 8

Purity	Immunogen affinity purified
Clonality	Polyclonal
Isotype	IgG

Applications

The Abpromise guarantee Our **Abpromise guarantee** covers the use of ab190462 in the following tested applications. The application notes include recommended starting dilutions; optimal dilutions/concentrations should be determined by the end user.

Application	Abreviews	Notes
WB		1/1000 - 1/5000. Predicted molecular weight: 65 kDa.
IP		Use at 2-10 µg/mg of lysate.

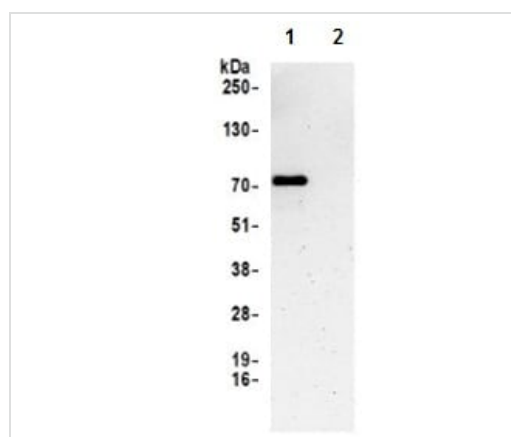
Target

Function Catalyzes the ATP-dependent amination of UTP to CTP with either L-glutamine or ammonia as the source of nitrogen. Constitutes the rate-limiting enzyme in the synthesis of cytosine nucleotides.

Pathway Pyrimidine metabolism; CTP biosynthesis via de novo pathway; CTP from UDP: step 2/2.

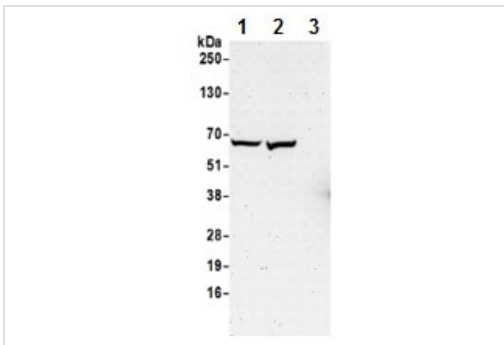
Sequence similarities Belongs to the CTP synthase family.
Contains 1 glutamine amidotransferase type-1 domain.

Images



Immunoprecipitation - Anti-CTPS2 antibody - C-terminal (ab190462)

Immunoprecipitation analysis of 293T cell lysate (in NETN buffer, 1 mg per IP reaction; 20% of IP loaded) labeling CTPS2 using ab190462 at 6 µg per reaction (lane 1). A Control IgG was used in lane 2. For blotting immunoprecipitated CTPS2, ab190462 was used at 1 µg/ml. Detection: Chemiluminescence with an exposure time of 3 minutes.



Western blot - Anti-CTPS2 antibody - C-terminal (ab190462)

All lanes : Anti-CTPS2 antibody - C-terminal (ab190462) at 0.4 $\mu\text{g/ml}$

Lane 1 : HeLa whole cell lysate in NETN buffer

Lane 2 : 293T whole cell lysate in NETN buffer

Lane 3 : Jurkat whole cell lysate in NETN buffer

Lysates/proteins at 50 μg per lane.

Developed using the ECL technique.

Predicted band size: 65 kDa

Exposure time: 3 minutes

Please note: All products are "FOR RESEARCH USE ONLY. NOT FOR USE IN DIAGNOSTIC PROCEDURES"

Our Abpromise to you: Quality guaranteed and expert technical support

- Replacement or refund for products not performing as stated on the datasheet
- Valid for 12 months from date of delivery
- Response to your inquiry within 24 hours
- We provide support in Chinese, English, French, German, Japanese and Spanish
- Extensive multi-media technical resources to help you
- We investigate all quality concerns to ensure our products perform to the highest standards

If the product does not perform as described on this datasheet, we will offer a refund or replacement. For full details of the Abpromise, please visit <https://www.abcam.com/abpromise> or contact our technical team.

Terms and conditions

- Guarantee only valid for products bought direct from Abcam or one of our authorized distributors