

## Product datasheet

### Anti-CTRP3 antibody ab36870

[15 References](#) [3 Images](#)

#### Overview

|                            |   |
|----------------------------|---|
| <b>Product name</b>        | Anti-CTRP3 antibody   |
| <b>Description</b>         | Rabbit polyclonal to CTRP3  |
| <b>Host species</b>        | Rabbit  |
| <b>Tested applications</b> | <b>Suitable for:</b> WB, IHC-P, ICC/IF  |
| <b>Species reactivity</b>  | <b>Reacts with:</b> Mouse   |
| <b>Immunogen</b>           | A 16 amino acid peptide from near the center of human CTRP3.  |
| <b>Positive control</b>    | Mouse heart cell lysate.  |
| <b>General notes</b>       | <p>The Life Science industry has been in the grips of a reproducibility crisis for a number of years. Abcam is leading the way in addressing this with our range of recombinant monoclonal antibodies and knockout edited cell lines for gold-standard validation. Please check that this product meets your needs before purchasing.</p> <p>If you have any questions, special requirements or concerns, please send us an inquiry and/or contact our Support team ahead of purchase. Recommended alternatives for this product can be found below, along with publications, customer reviews and Q&amp;As</p> |

#### Properties

|                             |   |
|-----------------------------|---|
| <b>Form</b>                 | Liquid  |
| <b>Storage instructions</b> | Shipped at 4°C. Store at +4°C.                                  |
| <b>Storage buffer</b>       | pH: 7.2<br>Preservative: 0.02% Sodium azide<br>Constituent: PBS |
| <b>Purity</b>               | Immunogen affinity purified                                     |
| <b>Clonality</b>            | Polyclonal  |
| <b>Isotype</b>              | IgG   |

#### Applications

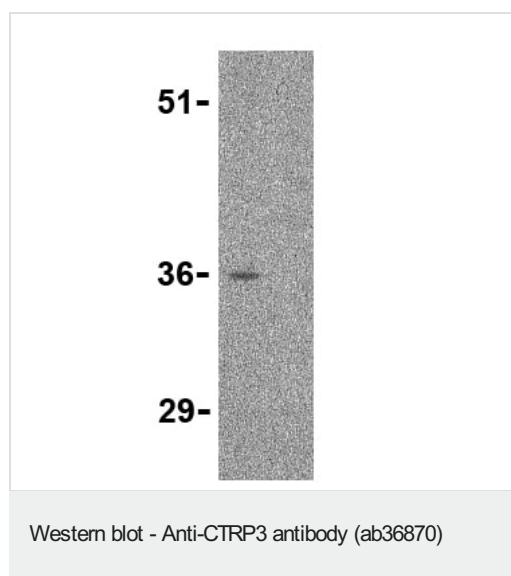
**The Abpromise guarantee** Our **Abpromise guarantee** covers the use of ab36870 in the following tested applications. The application notes include recommended starting dilutions; optimal dilutions/concentrations should be determined by the end user.

| Application | Abreviews | Notes  |
|-------------|-----------|--|
| WB          |           | Use a concentration of 1 - 2 µg/ml. Detects a band of approximately 36 kDa (predicted molecular weight: 27 kDa). |
| IHC-P       |           | Use a concentration of 2 µg/ml.  |
| ICC/IF      |           | Use a concentration of 20 µg/ml.   |

## Target

|                              |  |
|------------------------------|--|
| <b>Sequence similarities</b> | Contains 1 C1q domain.<br>Contains 1 collagen-like domain. |
| <b>Cellular localization</b> | Secreted.  |

## Images



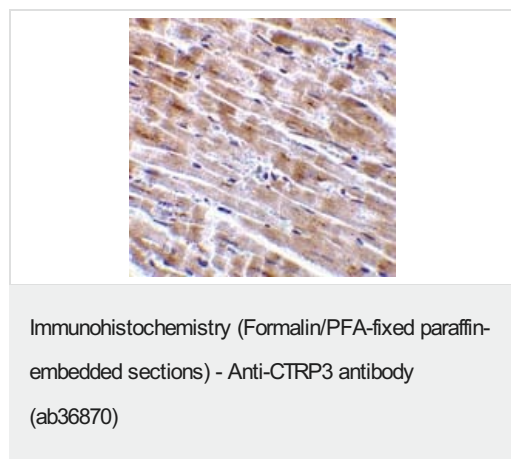
**All lanes :** Anti-CTRP3 antibody (ab36870) at 1 µg/ml

**All lanes :** Mouse heart cell lysate

**Predicted band size:** 27 kDa

**Observed band size:** 36 kDa

In lane 1 (left) no blocking peptide present; in lane 2 (right) blocking peptide is present. These proteins are often highly modified post-translationally and may migrate in SDS-PAGE at positions other than their predicted size.



ab36870 at 2µg/ml staining CTRP3 in mouse heart tissue by IHC

Immunocytochemistry/ Immunofluorescence - Anti-CTRP3 antibody (ab36870)

Immunofluorescence of CTRP3 in Mouse Heart cells using ab36870 at 10 ug/ml.

**Please note:** All products are "FOR RESEARCH USE ONLY. NOT FOR USE IN DIAGNOSTIC PROCEDURES"

### Our Abpromise to you: Quality guaranteed and expert technical support

---

- Replacement or refund for products not performing as stated on the datasheet
- Valid for 12 months from date of delivery
- Response to your inquiry within 24 hours
- We provide support in Chinese, English, French, German, Japanese and Spanish
- Extensive multi-media technical resources to help you
- We investigate all quality concerns to ensure our products perform to the highest standards

If the product does not perform as described on this datasheet, we will offer a refund or replacement. For full details of the Abpromise, please visit <https://www.abcam.com/abpromise> or contact our technical team.

### Terms and conditions

---

- Guarantee only valid for products bought direct from Abcam or one of our authorized distributors