

## Product datasheet

### Anti-Cullin 3/CUL-3 antibody [EPR3196Y] $\alpha$ b75851

Recombinant **RabMAb**

★★★★★ **2 Abreviews** **12 References** [3 Images](#)

#### Overview

<b>Product name</b>	Anti-Cullin 3/CUL-3 antibody [EPR3196Y]
<b>Description</b>	Rabbit monoclonal [EPR3196Y] to Cullin 3/CUL-3
<b>Host species</b>	Rabbit
<b>Tested applications</b>	<b>Suitable for:</b> Flow Cyt (Intra), IP, WB <b>Unsuitable for:</b> ICC/IF or IHC-P
<b>Species reactivity</b>	<b>Reacts with:</b> Mouse, Rat, Human
<b>Immunogen</b>	Synthetic peptide. This information is proprietary to Abcam and/or its suppliers.
<b>Positive control</b>	HeLa, SH-SY5Y, PC12 and 3T3 cell lysates.
<b>General notes</b>	This product is a recombinant monoclonal antibody, which offers several advantages including: <ul style="list-style-type: none"> <li>- High batch-to-batch consistency and reproducibility</li> <li>- Improved sensitivity and specificity</li> <li>- Long-term security of supply</li> <li>- Animal-free production</li> </ul> For more information <a href="#">see here</a> . Our RabMAb <sup>®</sup> technology is a patented hybridoma-based technology for making rabbit monoclonal antibodies. For details on our patents, please refer to <a href="#">RabMAb<sup>®</sup> patents</a> .

#### Properties

<b>Form</b>	Liquid
<b>Storage instructions</b>	Shipped at 4°C. Store at -20°C. Stable for 12 months at -20°C.
<b>Storage buffer</b>	pH: 7.20 Preservative: 0.05% Sodium azide Constituents: 0.1% BSA, 40% Glycerol (glycerin, glycerine), 9.85% Tris glycine, 50% Tissue culture supernatant
<b>Purity</b>	Protein A purified
<b>Clonality</b>	Monoclonal
<b>Clone number</b>	EPR3196Y
<b>Isotype</b>	IgG

## Applications

### The Abpromise guarantee

Our [Abpromise guarantee](#) covers the use of ab75851 in the following tested applications.

The application notes include recommended starting dilutions; optimal dilutions/concentrations should be determined by the end user.

Application	Abreviews	Notes
Flow Cyt (Intra)		1/30 - 1/100. <b>ab172730</b> - Rabbit monoclonal IgG, is suitable for use as an isotype control with this antibody.
IP		Use at an assay dependent concentration.
WB	★★★★★ (1)	1/20000 - 1/100000. Predicted molecular weight: 89 kDa.

### Application notes

Is unsuitable for ICC/IF or IHC-P.

## Target

### Function

Core component of multiple cullin-RING-based BCR (BTB-CUL3-RBX1) E3 ubiquitin-protein ligase complexes which mediate the ubiquitination and subsequent proteasomal degradation of target proteins. As a scaffold protein may contribute to catalysis through positioning of the substrate and the ubiquitin-conjugating enzyme. The E3 ubiquitin-protein ligase activity of the complex is dependent on the neddylation of the cullin subunit and is inhibited by the association of the deneddylated cullin subunit with TIP120A/CAND1 (By similarity). The functional specificity of the BCR complex depends on the BTB domain-containing protein as the substrate recognition component. BCR(SPOP) is involved in ubiquitination of BMI1/PCGF4, H2AFY and DAXX, and probably GLI2 or GLI3. BCR(KLHL9-KLHL13) controls the dynamic behavior of AURKB on mitotic chromosomes and thereby coordinates faithful mitotic progression and completion of cytokinesis. Involved in ubiquitination of cyclin E and of cyclin D1 (in vitro) thus involved in regulation of G1/S transition.

### Tissue specificity

Widely expressed.

### Pathway

Protein modification; protein ubiquitination.

### Sequence similarities

Belongs to the cullin family.

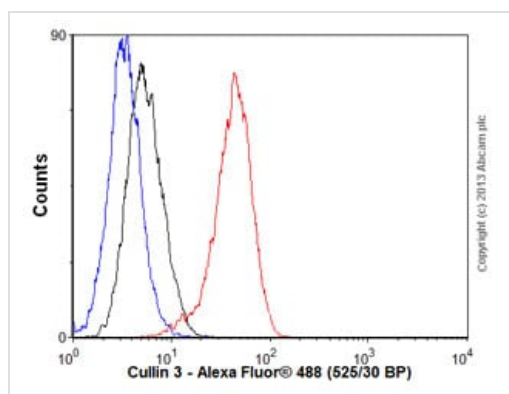
### Post-translational modifications

Neddylated. Attachment of NEDD8 is required for the E3 ubiquitin-protein ligase activity of the BCR complex. Deneddylated via its interaction with the COP9 signalosome (CSN) complex.

### Cellular localization

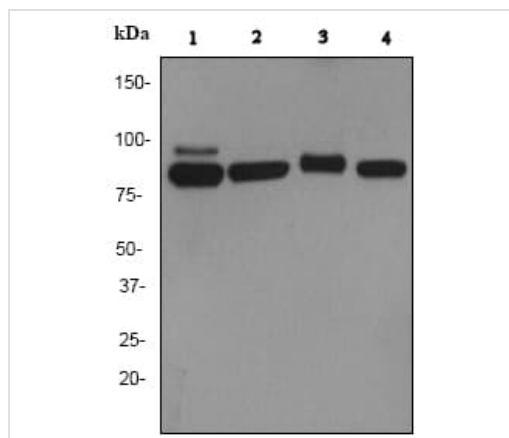
Nucleus. Golgi apparatus.

## Images



Flow Cytometry (Intracellular) - Anti-Cullin 3/CUL-3 antibody [EPR3196Y] (ab75851)

Overlay histogram showing HeLa cells stained with ab75851 (red line). The cells were fixed with 80% methanol (5 min) and then permeabilized with 0.1% PBS-Tween for 20 min. The cells were then incubated in 1x PBS / 10% normal goat serum / 0.3M glycine to block non-specific protein-protein interactions followed by the antibody (ab75851, 1/100 dilution) for 30 min at 22°C. The secondary antibody used was Alexa Fluor® 488 goat anti-rabbit IgG (H+L) ([ab150077](#)) at 1/2000 dilution for 30 min at 22°C. Isotype control antibody (black line) was rabbit IgG (monoclonal) (1 µg/1x10<sup>6</sup> cells) used under the same conditions. Unlabelled sample (blue line) was also used as a control. Acquisition of >5,000 events were collected using a 20mW Argon ion laser (488nm) and 525/30 bandpass filter.



Western blot - Anti-Cullin 3/CUL-3 antibody [EPR3196Y] (ab75851)

**All lanes :** Anti-Cullin 3/CUL-3 antibody [EPR3196Y] (ab75851) at 1/20000 dilution

**Lane 1 :** HeLa cell lysate

**Lane 2 :** SH-SY5Y cell lysate

**Lane 3 :** PC12 cell lysate

**Lane 4 :** 3T3 cell lysate

Lysates/proteins at 10 µg per lane.

### Secondary

**All lanes :** HRP-labeled goat anti-rabbit at 1/2000 dilution

**Predicted band size:** 89 kDa

**Observed band size:** 82,90 kDa

### Why choose a recombinant antibody?



**Research with confidence**  
Consistent and reproducible results



**Long-term and scalable supply**  
Recombinant technology



**Success from the first experiment**  
Confirmed specificity



**Ethical standards compliant**  
Animal-free production

Anti-Cullin 3/CUL-3 antibody [EPR3196Y] (ab75851)

**Please note:** All products are "FOR RESEARCH USE ONLY. NOT FOR USE IN DIAGNOSTIC PROCEDURES"

### Our Abpromise to you: Quality guaranteed and expert technical support

---

- Replacement or refund for products not performing as stated on the datasheet
- Valid for 12 months from date of delivery
- Response to your inquiry within 24 hours
- We provide support in Chinese, English, French, German, Japanese and Spanish
- Extensive multi-media technical resources to help you
- We investigate all quality concerns to ensure our products perform to the highest standards

If the product does not perform as described on this datasheet, we will offer a refund or replacement. For full details of the Abpromise, please visit <https://www.abcam.com/abpromise> or contact our technical team.

### Terms and conditions

---

- Guarantee only valid for products bought direct from Abcam or one of our authorized distributors