



Product datasheet

Anti-CWF19L2 antibody ab201203

2 Images

Overview

| | |
|----------------------------|---|
| Product name | Anti-CWF19L2 antibody |
| Description | Rabbit polyclonal to CWF19L2 |
| Host species | Rabbit |
| Tested applications | Suitable for: WB, IHC-P |
| Species reactivity | Reacts with: Human |
| Immunogen | Recombinant fragment corresponding to Human CWF19L2 aa 300-550. Database link: BC110442 |
| | <div>  Run BLAST with </div> <div>  Run BLAST with </div> |
| Positive control | Human fetal liver lysate; Human testis tissue. |
| General notes | <p>The Life Science industry has been in the grips of a reproducibility crisis for a number of years. Abcam is leading the way in addressing this with our range of recombinant monoclonal antibodies and knockout edited cell lines for gold-standard validation. Please check that this product meets your needs before purchasing.</p> <p>If you have any questions, special requirements or concerns, please send us an inquiry and/or contact our Support team ahead of purchase. Recommended alternatives for this product can be found below, along with publications, customer reviews and Q&As</p> |

Properties

| | |
|-----------------------------|---|
| Form | Lyophilized:Reconstitute in 200ul Sterile Distilled Water. |
| Storage instructions | Shipped at 4°C. Store at +4°C short term (1-2 weeks). Upon delivery aliquot. Store at -20°C long term. Avoid freeze / thaw cycle. |
| Storage buffer | pH: 7.20 Preservative: 0.02% Sodium azide Constituents: 98% PBS, 1% BSA |
| Purity | Immunogen affinity purified |
| Clonality | Polyclonal |
| Isotype | IgG |

Applications

The Abpromise guarantee

Our **Abpromise guarantee** covers the use of ab201203 in the following tested applications.

The application notes include recommended starting dilutions; optimal dilutions/concentrations should be determined by the end user.

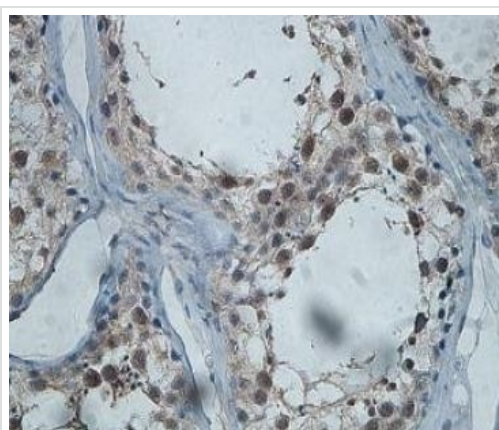
| Application | Abreviews | Notes |
|-------------|-----------|--|
| WB | | 1/200 - 1/1000. Predicted molecular weight: 86, 104 kDa. |
| IHC-P | | 1/100 - 1/500. |

Target

Sequence similarities

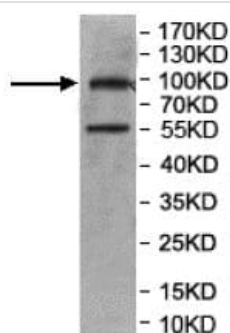
Belongs to the CWF19 family.

Images



Immunohistochemical analysis of Formalin-fixed, Paraffin-embedded Human testis tissue labeling CWF19L2 with ab201203 at 1/100 dilution.

Immunohistochemistry (Formalin/PFA-fixed paraffin-embedded sections) - Anti-CWF19L2 antibody (ab201203)



Anti-CWF19L2 antibody (ab201203) at 1/1000 dilution + Human fetal liver lysate

Predicted band size: 86, 104 kDa

Western blot - Anti-CWF19L2 antibody (ab201203)

Please note: All products are "FOR RESEARCH USE ONLY. NOT FOR USE IN DIAGNOSTIC PROCEDURES"

Our Abpromise to you: Quality guaranteed and expert technical support

- Replacement or refund for products not performing as stated on the datasheet
- Valid for 12 months from date of delivery
- Response to your inquiry within 24 hours

- We provide support in Chinese, English, French, German, Japanese and Spanish
- Extensive multi-media technical resources to help you
- We investigate all quality concerns to ensure our products perform to the highest standards

If the product does not perform as described on this datasheet, we will offer a refund or replacement. For full details of the Abpromise, please visit <https://www.abcam.com/abpromise> or contact our technical team.

Terms and conditions

- Guarantee only valid for products bought direct from Abcam or one of our authorized distributors