

Product datasheet

Anti-CXCL1/GRO alpha antibody ab269939

[3 Images](#)

Overview

Product name	Anti-CXCL1/GRO alpha antibody
Description	Rabbit polyclonal to CXCL1/GRO alpha
Host species	Rabbit
Tested applications	Suitable for: WB, IHC-P
Species reactivity	Reacts with: Mouse
Immunogen	Synthetic peptide. This information is proprietary to Abcam and/or its suppliers.
Positive control	WB: Mouse spleen and lung lysate. IHC-P: Mouse spleen and lung tissue.
General notes	<p>The Life Science industry has been in the grips of a reproducibility crisis for a number of years. Abcam is leading the way in addressing this with our range of recombinant monoclonal antibodies and knockout edited cell lines for gold-standard validation. Please check that this product meets your needs before purchasing.</p> <p>If you have any questions, special requirements or concerns, please send us an inquiry and/or contact our Support team ahead of purchase. Recommended alternatives for this product can be found below, along with publications, customer reviews and Q&As</p>

Properties

Form	Liquid
Storage instructions	Shipped at 4°C. Store at +4°C short term (1-2 weeks). Upon delivery aliquot. Store at -20°C long term. Avoid freeze / thaw cycle.
Storage buffer	Preservative: 0.01% Sodium azide Constituent: PBS
Purity	Affinity purified
Clonality	Polyclonal
Isotype	IgG

Applications

The Abpromise guarantee Our **Abpromise guarantee** covers the use of ab269939 in the following tested applications. The application notes include recommended starting dilutions; optimal dilutions/concentrations should be determined by the end user.

Application	Abreviews	Notes
WB		Use at an assay dependent concentration. Predicted molecular weight: 11 kDa.
IHC-P		1/100 - 1/200. Perform heat mediated antigen retrieval with citrate buffer pH 6 before commencing with IHC staining protocol.

Target

Function

Has chemotactic activity for neutrophils. May play a role in inflammation and exerts its effects on endothelial cells in an autocrine fashion. In vitro, the processed forms GRO-alpha(4-73), GRO-alpha(5-73) and GRO-alpha(6-73) show a 30-fold higher chemotactic activity.

Sequence similarities

Belongs to the intercrine alpha (chemokine CxC) family.

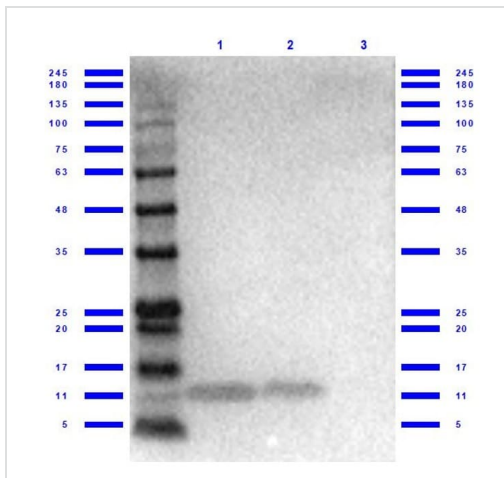
Post-translational modifications

N-terminal processed forms GRO-alpha(4-73), GRO-alpha(5-73) and GRO-alpha(6-73) are produced by proteolytic cleavage after secretion from peripheral blood monocytes.

Cellular localization

Secreted.

Images



Western blot - Anti-CXCL1/GRO alpha antibody (ab269939)

All lanes : Anti-CXCL1/GRO alpha antibody (ab269939)

Lane 1 : Mouse spleen lysate

Lane 2 : Mouse lung lysate

Lane 3 : Mouse testis lysate

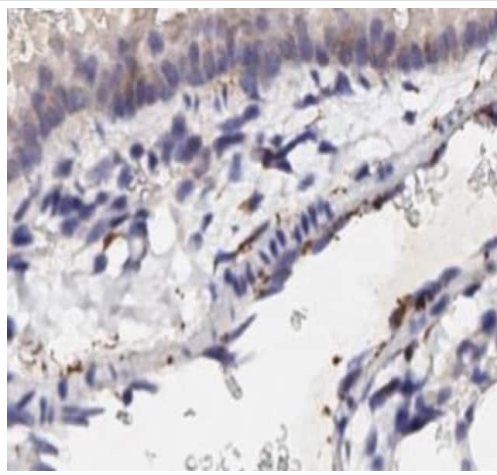
Lysates/proteins at 35 µg per lane.

Secondary

All lanes : Rabbit IgG [H&L] HRP at 1/70000 dilution

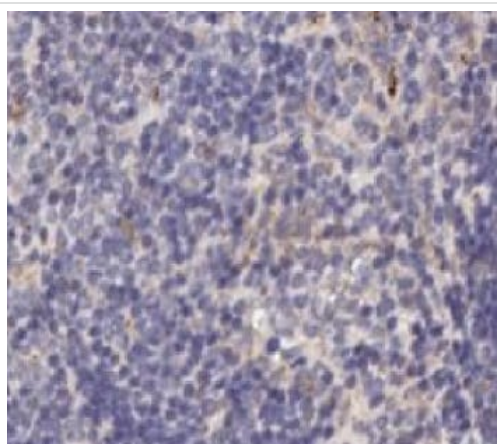
Predicted band size: 11 kDa

Exposure time: 55 seconds



Immunohistochemistry (Formalin/PFA-fixed paraffin-embedded sections) - Anti-CXCL1/GRO alpha antibody (ab269939)

Immunohistochemistry Formalin/PFA-fixed paraffin-embedded mouse lung tissue stained for CXCL1/GRO alpha using ab269939 at a 1/100 dilution for 30 mins at RT. Secondary was a ready to use anti-rabbit polyclonal-HRP, 8 mins at RT. Counterstained with hematoxylin. Antigen retrieval was performed using HIER citrate buffer for 20 mins.



Immunohistochemistry (Formalin/PFA-fixed paraffin-embedded sections) - Anti-CXCL1/GRO alpha antibody (ab269939)

Immunohistochemistry Formalin/PFA-fixed paraffin-embedded mouse spleen tissue stained for CXCL1/GRO alpha using ab269939 at a 1/100 dilution for 30 mins at RT. Secondary was a ready to use anti-rabbit polyclonal-HRP, 8 mins at RT. Counterstained with hematoxylin. Antigen retrieval was performed using HIER citrate buffer for 20 mins.

Please note: All products are "FOR RESEARCH USE ONLY. NOT FOR USE IN DIAGNOSTIC PROCEDURES"

Our Abpromise to you: Quality guaranteed and expert technical support

- Replacement or refund for products not performing as stated on the datasheet

- Valid for 12 months from date of delivery
- Response to your inquiry within 24 hours

- We provide support in Chinese, English, French, German, Japanese and Spanish
- Extensive multi-media technical resources to help you
- We investigate all quality concerns to ensure our products perform to the highest standards

If the product does not perform as described on this datasheet, we will offer a refund or replacement. For full details of the Abpromise, please visit <https://www.abcam.com/abpromise> or contact our technical team.

Terms and conditions

- Guarantee only valid for products bought direct from Abcam or one of our authorized distributors