

## Product datasheet

# Anti-CXCL1/GRO alpha antibody [MM0208-9A18] ab89318

[5 References](#) [2 Images](#)

### Overview

---

<b>Product name</b>	Anti-CXCL1/GRO alpha antibody [MM0208-9A18]
<b>Description</b>	Mouse monoclonal [MM0208-9A18] to CXCL1/GRO alpha
<b>Host species</b>	Mouse
<b>Specificity</b>	Cross reacts weakly with GRO beta.
<b>Tested applications</b>	<b>Suitable for:</b> WB, IHC-P
<b>Species reactivity</b>	<b>Reacts with:</b> Human
<b>Immunogen</b>	Recombinant full length Human protein.
<b>Positive control</b>	WB: Human placenta tissue lysate. IHC-P: Human placenta tissue.
<b>General notes</b>	<p>The Life Science industry has been in the grips of a reproducibility crisis for a number of years. Abcam is leading the way in addressing this with our range of recombinant monoclonal antibodies and knockout edited cell lines for gold-standard validation. Please check that this product meets your needs before purchasing.</p> <p>If you have any questions, special requirements or concerns, please send us an inquiry and/or contact our Support team ahead of purchase. Recommended alternatives for this product can be found below, along with publications, customer reviews and Q&amp;As</p>

### Properties

---

<b>Form</b>	Liquid
<b>Storage instructions</b>	Shipped at 4°C. Upon delivery aliquot and store at -20°C or -80°C. Avoid repeated freeze / thaw cycles.
<b>Storage buffer</b>	Constituent: PBS
<b>Purity</b>	Protein G purified
<b>Clonality</b>	Monoclonal
<b>Clone number</b>	MM0208-9A18
<b>Isotype</b>	IgG2

### Applications

## The Abpromise guarantee

Our **Abpromise guarantee** covers the use of ab89318 in the following tested applications.

The application notes include recommended starting dilutions; optimal dilutions/concentrations should be determined by the end user.

Application	Abreviews	Notes
WB		1/500 - 1/1000. Predicted molecular weight: 11 kDa.
IHC-P		Use at an assay dependent concentration.

## Target

### Function

Has chemotactic activity for neutrophils. May play a role in inflammation and exerts its effects on endothelial cells in an autocrine fashion. In vitro, the processed forms GRO-alpha(4-73), GRO-alpha(5-73) and GRO-alpha(6-73) show a 30-fold higher chemotactic activity.

### Sequence similarities

Belongs to the intercrine alpha (chemokine CxC) family.

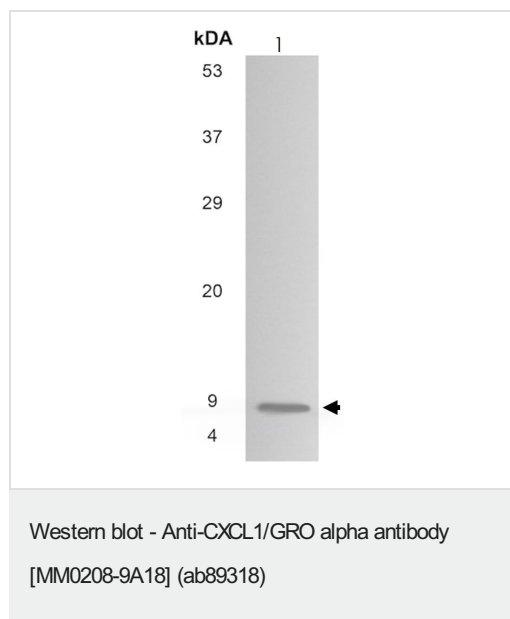
### Post-translational modifications

N-terminal processed forms GRO-alpha(4-73), GRO-alpha(5-73) and GRO-alpha(6-73) are produced by proteolytic cleavage after secretion from peripheral blood monocytes.

### Cellular localization

Secreted.

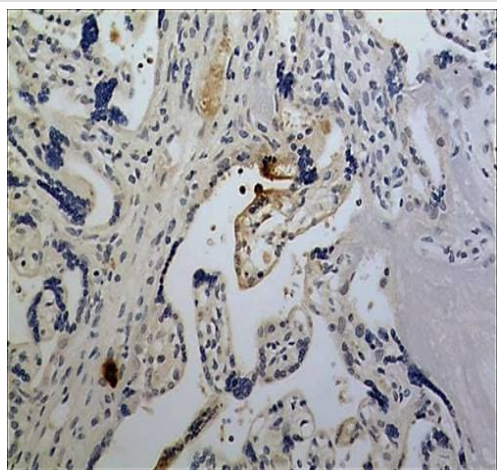
## Images



Anti-CXCL1/GRO alpha antibody [MM0208-9A18] (ab89318) at 1/500 dilution + Human placenta tissue lysate

**Predicted band size:** 11 kDa

**Observed band size:** 8 kDa



Immunohistochemistry (Formalin/PFA-fixed paraffin-embedded sections) - Anti-CXCL1/GRO alpha antibody [MM0208-9A18] (ab89318)

Immunohistochemistry (Formalin/PFA-fixed paraffin-embedded sections) analysis of human placental tissue section (4µm) labelling CXCL1/GRO alpha with ab89318. Tissue was treated with 15µg/ml Protense K for antigen retrieval and fixed with 4% PFA. A HRP-conjugated anti-mouse IgG was used as the secondary antibody (30 minutes at room temperature) followed by DAB color development.

**Please note:** All products are "FOR RESEARCH USE ONLY. NOT FOR USE IN DIAGNOSTIC PROCEDURES"

### Our Abpromise to you: Quality guaranteed and expert technical support

---

- Replacement or refund for products not performing as stated on the datasheet
- Valid for 12 months from date of delivery
- Response to your inquiry within 24 hours
- We provide support in Chinese, English, French, German, Japanese and Spanish
- Extensive multi-media technical resources to help you
- We investigate all quality concerns to ensure our products perform to the highest standards

If the product does not perform as described on this datasheet, we will offer a refund or replacement. For full details of the Abpromise, please visit <https://www.abcam.com/abpromise> or contact our technical team.

### Terms and conditions

---

- Guarantee only valid for products bought direct from Abcam or one of our authorized distributors