

Product datasheet

Anti-CXCL5 + CXCL6 antibody [EP13083] ab198505

Recombinant **RabMAb**

[7 References](#) [3 Images](#)

Overview

Product name	Anti-CXCL5 + CXCL6 antibody [EP13083]
Description	Rabbit monoclonal [EP13083] to CXCL5 + CXCL6
Host species	Rabbit
Tested applications	Suitable for: WB, IP Unsuitable for: IHC-P
Species reactivity	Reacts with: Human
Immunogen	Recombinant full length protein. This information is proprietary to Abcam and/or its suppliers.
Positive control	IP: A549 (Human lung carcinoma epithelial cell), whole cell lysate WB:A549 (Human lung carcinoma epithelial cell) starved overnight, then treated with 10ng/ml TNF- α , 10nM TPA and 0.1% BSA for 24 hours, whole cell lysate; HEK-293T cells transfected with a human CXCL6/CXCL5 expression vector containing His tag, then treated with 600 ng/ml BFA for 3h, whole cell lysate
General notes	<p>The production method for this product has been changed from hybridoma to recombinant on 15th April 2024.</p> <p>This product is a recombinant monoclonal antibody, which offers several advantages including:</p> <ul style="list-style-type: none">- High batch-to-batch consistency and reproducibility- Improved sensitivity and specificity- Long-term security of supply- Animal-free production <p>For more information see here.</p> <p>Our RabMAb[®] technology is a patented hybridoma-based technology for making rabbit monoclonal antibodies. For details on our patents, please refer to RabMAb[®] patents.</p>

Properties

Form	Liquid
Storage instructions	Shipped at 4°C. Store at +4°C short term (1-2 weeks). Upon delivery aliquot. Store at -20°C long term. Avoid freeze / thaw cycle.
Storage buffer	pH: 7.2 Preservative: 0.01% Sodium azide

Constituents: 40% Glycerol (glycerin, glycerine), 59% PBS, 0.05% BSA

Purity Protein A purified
Clonality Monoclonal
Clone number EP13083
Isotype IgG

Applications

The Abpromise guarantee Our **Abpromise guarantee** covers the use of ab198505 in the following tested applications. The application notes include recommended starting dilutions; optimal dilutions/concentrations should be determined by the end user.

Application	Abreviews	Notes
WB		1/10000. Detects a band of approximately 9 kDa (predicted molecular weight: 12 kDa).
IP		1/30.

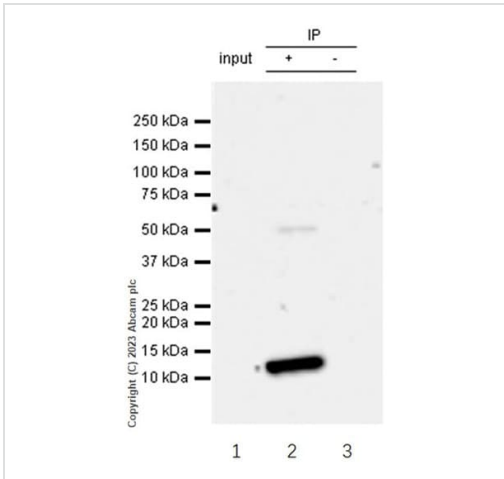
Application notes Is unsuitable for IHC-P.

Target

Relevance CXCL5: Involved in neutrophil activation. In vitro, ENA-78(8-78) and ENA-78(9-78) show a threefold higher chemotactic activity for neutrophil granulocytes. CXCL6: Chemotactic for neutrophil granulocytes. Signals through binding and activation of its receptors (CXCR1 and CXCR2). In addition to its chemotactic and angiogenic properties, it has strong antibacterial activity against Gram-positive and Gram-negative bacteria (90-fold-higher when compared to CXCL5 and CXCL7).

Cellular localization Secreted

Images



Immunoprecipitation - Anti-CXCL5 + CXCL6 antibody
[EP13083] (ab198505)

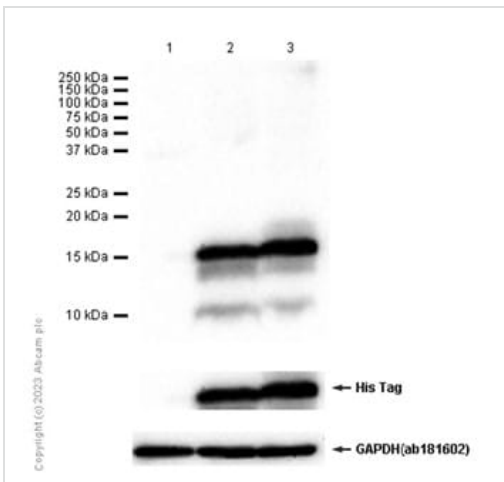
CXCL5 + CXCL6 was immunoprecipitated from 0.35 mg of A549 (Human lung carcinoma cell line) whole cell extract with ab198505 at 1/30 dilution. Western blot was performed from the immunoprecipitate using ab198505 at 1/1000 dilution. VeriBlot for IP Detection Reagent (HRP) ([ab131366](#)), was used as secondary antibody at 1/5000 dilution.

Lane 1: A549 (Human lung carcinoma epithelial cell), whole cell lysate, 10 μ g

Lane 2: A549 whole cell lysate with the ab198505 at 1/30 dilution

Lane 3: Rabbit monoclonal IgG ([ab172730](#)) instead of ab198505 in A549 whole cell lysate

Exposure time: 93 seconds



Western blot - Anti-CXCL5 + CXCL6 antibody
[EP13083] (ab198505)

All lanes : Anti-CXCL5 + CXCL6 antibody [EP13083] (ab198505) at 1/10000 dilution

Lane 1 : HEK-293T cells transfected with an empty expression vector containing His tag, whole cell lysate

Lane 2 : HEK-293T cells transfected with a human CXCL5 expression vector containing His tag, then treated with 600 ng/ml BFA for 3h, whole cell lysate

Lane 3 : HEK-293T cells transfected with a human CXCL6 expression vector containing His tag, then treated with 600 ng/ml BFA for 3h, whole cell lysate

Secondary

All lanes : Goat Anti-Rabbit IgG H&L (HRP) ([ab97051](#)) at 1/20000 dilution

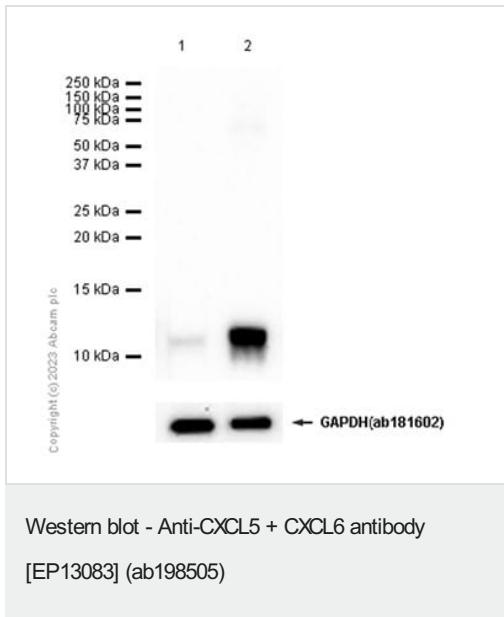
Predicted band size: 12 kDa

Exposure time: 10 seconds

The expression of CXCL5 and CXCL6 is induced by TNF- α and PMA. (PMID 9057843; PMID: 23922745).

[ab181602](#) was used as a GAPDH loading control.

Blocking and diluting buffer and concentration: 5% NFD/MTBST



All lanes : Anti-CXCL5 + CXCL6 antibody [EP13083] (ab198505) at 1/10000 dilution

Lane 1 : A549 (Human lung carcinoma epithelial cell) starved overnight, whole cell lysate

Lane 2 : A549 (Human lung carcinoma epithelial cell) starved overnight, then treated with 10ng/ml TNF- α , 10nM TPA and 0.1% BSA for 24 hours, whole cell lysate

Lysates/proteins at 15 μ g per lane.

Secondary

All lanes : Goat Anti-Rabbit IgG H&L (HRP) (**ab97051**) at 1/20000 dilution

Predicted band size: 12 kDa

Exposure time: 10 seconds

The expression of CXCL5 and CXCL6 is induced by TNF- α and PMA. (PMID 9057843; PMID: 23922745).

ab181602 was used a GAPDH loading control.

Blocking and diluting buffer and concentration: 5% NFD/MTBST

Please note: All products are "FOR RESEARCH USE ONLY. NOT FOR USE IN DIAGNOSTIC PROCEDURES"

Our Abpromise to you: Quality guaranteed and expert technical support

- Replacement or refund for products not performing as stated on the datasheet
- Valid for 12 months from date of delivery
- Response to your inquiry within 24 hours
- We provide support in Chinese, English, French, German, Japanese and Spanish
- Extensive multi-media technical resources to help you
- We investigate all quality concerns to ensure our products perform to the highest standards

If the product does not perform as described on this datasheet, we will offer a refund or replacement. For full details of the Abpromise, please visit <https://www.abcam.com/abpromise> or contact our technical team.

Terms and conditions

-
- Guarantee only valid for products bought direct from Abcam or one of our authorized distributors