




Product datasheet

Cy3 ® Anti-LAMP1 antibody ab67283

★★★★★ [2 Abreviews](#) [9 References](#) [2 Images](#)

Overview

| | |
|----------------------------|--|
| Product name | Cy3 ® Anti-LAMP1 antibody |
| Description | Cy3 ® Rabbit polyclonal to LAMP1 |
| Host species | Rabbit |
| Conjugation | Cy3 ®. Ex: 552nm, Em: 565nm |
| Tested applications | Suitable for: ICC/IF |
| Species reactivity | Reacts with: Mouse, Human Predicted to work with: Chicken, Cow, Pig, Xenopus laevis, Zebrafish, Woodchuck  |
| Immunogen | Synthetic peptide: GRKRSHAGYQTI conjugated to KLH, corresponding to C terminal amino acids 405-416 of Human LAMP1.  Run BLAST with  Run BLAST with |
| Positive control | Human Hela cells, rat NRK cells and mouse 3T3 cells. |
| General notes | Molar Ratio (F/P): 3-9. This product or portions thereof is manufactured under license from Carnegie Mellon University under U.S. Patent Number 5, 268, 486 and related patents. Cy® and CyDye® are trademarks of Cytiva. The Life Science industry has been in the grips of a reproducibility crisis for a number of years. Abcam is leading the way in addressing this with our range of recombinant monoclonal antibodies and knockout edited cell lines for gold-standard validation. Please check that this product meets your needs before purchasing. If you have any questions, special requirements or concerns, please send us an inquiry and/or contact our Support team ahead of purchase. Recommended alternatives for this product can be found below, along with publications, customer reviews and Q&As |

Properties

| | |
|-----------------------------|---|
| Form | Liquid |
| Storage instructions | Shipped at 4°C. Store at +4°C. |
| Storage buffer | pH: 7.40 Preservative: 0.097% Sodium azide |

| | |
|---------------------------|--|
| | Constituent: 0.0268% PBS |
| Purity | Protein A purified |
| Purification notes | Purified using an antigen affinity matrix. The conjugate was purified by gel-filtration to remove unbound Cy3 fluorophore. |
| Clonality | Polyclonal |
| Isotype | IgG |

Applications

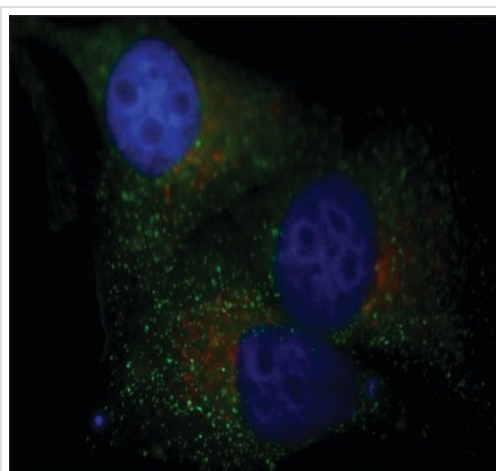
The Abpromise guarantee Our **Abpromise guarantee** covers the use of ab67283 in the following tested applications. The application notes include recommended starting dilutions; optimal dilutions/concentrations should be determined by the end user.

| Application | Abreviews | Notes |
|-------------|-----------|-------------------------------------|
| ICC/IF | ★★★★★ (2) | Use a concentration of 1 - 2 µg/ml. |

Target

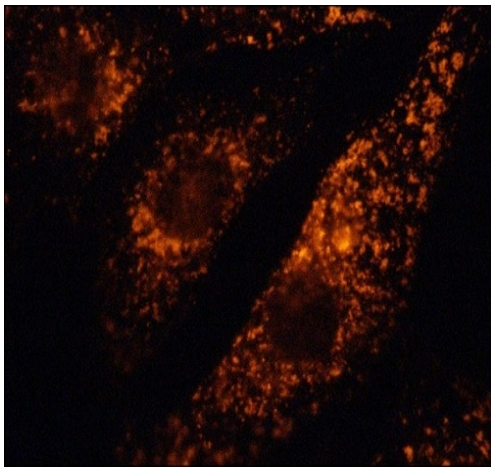
| | |
|---|---|
| Function | Presents carbohydrate ligands to selectins. Also implicated in tumor cell metastasis. |
| Sequence similarities | Belongs to the LAMP family. |
| Post-translational modifications | O- and N-glycosylated; some of the 18 N-linked glycans are polylactosaminoglycans. |
| Cellular localization | Cell membrane. Endosome membrane. Lysosome membrane. This protein shuttles between lysosomes, endosomes, and the plasma membrane. |

Images



Ab67283 staining LAMP1 in HeLa cells by ICC/IF (Immunocytochemistry/Immunofluorescence). Cells were fixed with 4% paraformaldehyde and permeabilized with 0.4% saponin. Rabbit Anti-PMP70, Atto 488 Conjugate (peroxisomes stained in green) and 2 µg/mL Rabbit Anti-LAMP1, Cy3 Conjugate (ab67283) (lysosomes stained in red). Cells were counterstained with DAPI (blue) to stain nuclei.

Immunocytochemistry/ Immunofluorescence - Cy3 ©
Anti-LAMP1 antibody (ab67283)



Immunocytochemistry/ Immunofluorescence - Cy3 ®
Anti-LAMP1 antibody (ab67283)

Ab67283 (2µg) staining LAMP1 in NIH-3T3 cells by ICC/IF (Immunocytochemistry/Immunofluorescence). Cells were fixed with 4% paraformaldehyde.

Please note: All products are "FOR RESEARCH USE ONLY. NOT FOR USE IN DIAGNOSTIC PROCEDURES"

Our Abpromise to you: Quality guaranteed and expert technical support

- Replacement or refund for products not performing as stated on the datasheet
- Valid for 12 months from date of delivery
- Response to your inquiry within 24 hours
- We provide support in Chinese, English, French, German, Japanese and Spanish
- Extensive multi-media technical resources to help you
- We investigate all quality concerns to ensure our products perform to the highest standards

If the product does not perform as described on this datasheet, we will offer a refund or replacement. For full details of the Abpromise, please visit <https://www.abcam.com/abpromise> or contact our technical team.

Terms and conditions

- Guarantee only valid for products bought direct from Abcam or one of our authorized distributors