

Product datasheet

Anti-Cyclin A1 antibody [EPR24373-146] ab270940

Recombinant RabMAb

6 Images

Overview

Product name	Anti-Cyclin A1 antibody [EPR24373-146]
Description	Rabbit monoclonal [EPR24373-146] to Cyclin A1
Host species	Rabbit
Specificity	Not suitable for testing cell lines in WB.
Tested applications	Suitable for: WB, IHC-P Unsuitable for: Flow Cyt, ICC/IF or IP
Species reactivity	Reacts with: Human
Immunogen	Recombinant fragment. This information is proprietary to Abcam and/or its suppliers.
Positive control	WB: Human testis and His-tagged human cyclinA1 recombinant protein lysate IHC-P: Human testis tissue.
General notes	<p>This product is a recombinant monoclonal antibody, which offers several advantages including:</p> <ul style="list-style-type: none">- High batch-to-batch consistency and reproducibility- Improved sensitivity and specificity- Long-term security of supply- Animal-free production <p>For more information see here.</p> <p>Our RabMAb[®] technology is a patented hybridoma-based technology for making rabbit monoclonal antibodies. For details on our patents, please refer to RabMAb[®] patents.</p>

Properties

Form	Liquid
Storage instructions	Shipped at 4°C. Store at +4°C short term (1-2 weeks). Upon delivery aliquot. Store at -20°C. Avoid freeze / thaw cycle.
Storage buffer	pH: 7.2 Preservative: 0.01% Sodium azide Constituents: 59% PBS, 40% Glycerol (glycerin, glycerine), 0.05% BSA
Purity	Protein A purified
Clonality	Monoclonal

Clone number EPR24373-146

Isotype IgG

Applications

The Abpromise guarantee Our **Abpromise guarantee** covers the use of ab270940 in the following tested applications.

The application notes include recommended starting dilutions; optimal dilutions/concentrations should be determined by the end user.

Application	Abreviews	Notes
WB		1/1000. Predicted molecular weight: 52 kDa.
IHC-P		1/2000.

Application notes Is unsuitable for Flow Cyt, ICC/IF or IP.

Target

Function May be involved in the control of the cell cycle at the G1/S (start) and G2/M (mitosis) transitions. May primarily function in the control of the germline meiotic cell cycle and additionally in the control of mitotic cell cycle in some somatic cells.

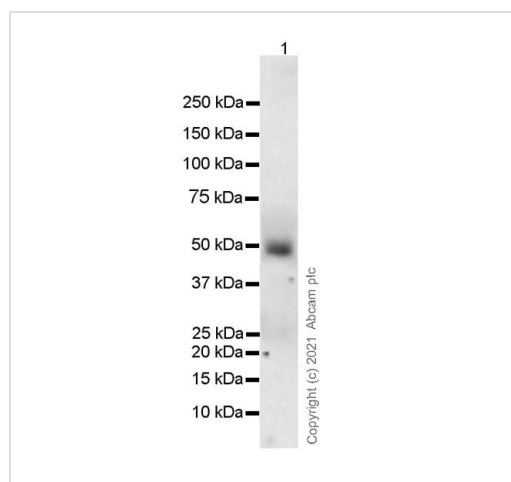
Tissue specificity Very high levels in testis and very low levels in brain. Also found in myeloid Leukemia cell lines.

Sequence similarities Belongs to the cyclin family. Cyclin AB subfamily.

Developmental stage Expression increases in early G1 phase and reaches highest levels during the S and G2/M phases.

Cellular localization Nucleus.

Images



Western blot - Anti-Cyclin A1 antibody [EPR24373-146] (ab270940)

Anti-Cyclin A1 antibody [EPR24373-146] (ab270940) at 1/1000 dilution + Human testis tissue lysate at 20 µg

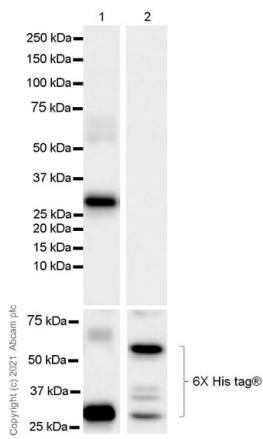
Secondary

Goat Anti-Rabbit IgG H&L (HRP) ([ab97051](#)) at 1/50000 dilution

Predicted band size: 52 kDa

Blocking and diluting buffer and concentration: 5% NFDM/TBST

Exposure time: 3 minutes



Western blot - Anti-Cyclin A1 antibody [EPR24373-146] (ab270940)

All lanes : Anti-Cyclin A1 antibody [EPR24373-146] (ab270940) at 1/5000 dilution

Lane 1 : His-tagged human cyclinA1 recombinant protein (aa51-223)

Lane 2 : His-tagged human cyclinA2 recombinant protein (aa1-431)

Secondary

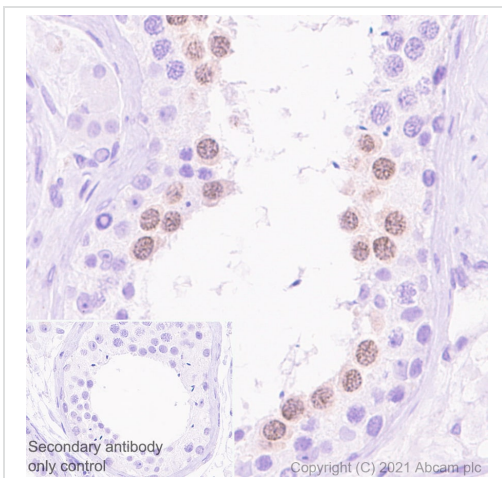
All lanes : Goat Anti-Rabbit IgG, (H+L), Peroxidase conjugated (**ab97051**) at 1/100000 dilution

Predicted band size: 52 kDa

Observed band size: 28 kDa

Blocking and diluting buffer and concentration: 5% NFD/MTBST

Exposure time: 10 seconds

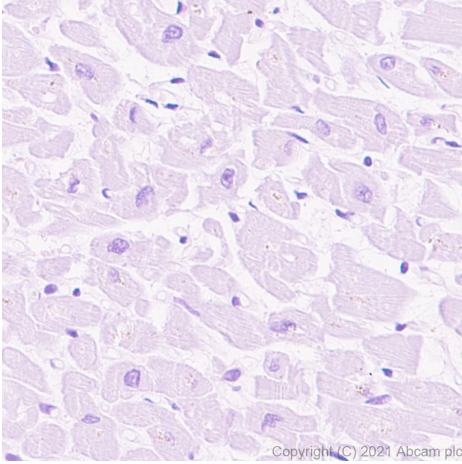


Immunohistochemistry (Formalin/PFA-fixed paraffin-embedded sections) - Anti-Cyclin A1 antibody [EPR24373-146] (ab270940)

Immunohistochemical analysis of paraffin-embedded Human testis tissue labelling Cyclin A1 with ab270940 at 1/2000 (0.231 ug/ml) followed by a ready to use Goat Anti-Rabbit IgG H&L (HRP polymer). Nuclear staining on the pachytene spermatocytes of human testis (PMID: 14696091). Counterstained with Hematoxylin.

Secondary antibody only control: Secondary antibody is a ready to use Goat Anti-Rabbit IgG H&L (HRP polymer).

Heat mediated antigen retrieval using **ab93684** (Tris/EDTA buffer, pH 9.0)

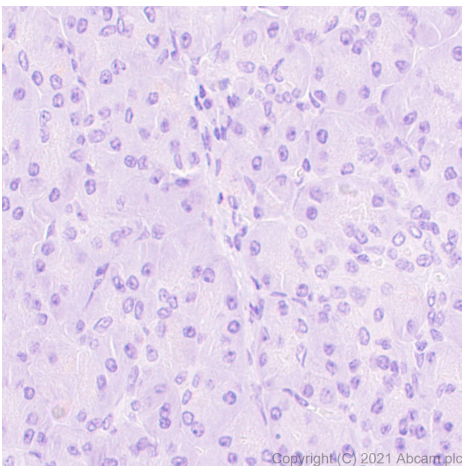


Immunohistochemistry (Formalin/PFA-fixed paraffin-embedded sections) - Anti-Cyclin A1 antibody [EPR24373-146] (ab270940)

Immunohistochemical analysis of paraffin-embedded Human cardiac muscle tissue labelling Cyclin A1 with ab270940 at 1/2000 (0.231 ug/ml) followed by a ready to use Goat Anti-Rabbit IgG H&L (HRP polymer). Negative control: no staining on human cardiac muscle (PMID: 9041194). Counterstained with Hematoxylin.

Secondary antibody only control: Secondary antibody is a ready to use Goat Anti-Rabbit IgG H&L (HRP polymer).

Heat mediated antigen retrieval using **ab93684** (Tris/EDTA buffer, pH 9.0)



Immunohistochemistry (Formalin/PFA-fixed paraffin-embedded sections) - Anti-Cyclin A1 antibody [EPR24373-146] (ab270940)

Immunohistochemical analysis of paraffin-embedded Human pancreas tissue labelling Cyclin A1 with ab270940 at 1/2000 (0.231 ug/ml) followed by a ready to use Goat Anti-Rabbit IgG H&L (HRP polymer). Negative control: no staining on human pancreas (PMID: 9041194). Counterstained with Hematoxylin.

Secondary antibody only control: Secondary antibody is a ready to use Goat Anti-Rabbit IgG H&L (HRP polymer).

Heat mediated antigen retrieval using **ab93684** (Tris/EDTA buffer, pH 9.0)

Why choose a recombinant antibody?



Research with confidence
Consistent and reproducible results



Long-term and scalable supply
Recombinant technology



Success from the first experiment
Confirmed specificity



Ethical standards compliant
Animal-free production

Anti-Cyclin A1 antibody [EPR24373-146] (ab270940)

Please note: All products are "FOR RESEARCH USE ONLY. NOT FOR USE IN DIAGNOSTIC PROCEDURES"

Our Abpromise to you: Quality guaranteed and expert technical support

- Replacement or refund for products not performing as stated on the datasheet
- Valid for 12 months from date of delivery
- Response to your inquiry within 24 hours
- We provide support in Chinese, English, French, German, Japanese and Spanish
- Extensive multi-media technical resources to help you
- We investigate all quality concerns to ensure our products perform to the highest standards

If the product does not perform as described on this datasheet, we will offer a refund or replacement. For full details of the Abpromise, please visit <https://www.abcam.com/abpromise> or contact our technical team.

Terms and conditions

- Guarantee only valid for products bought direct from Abcam or one of our authorized distributors