




Product datasheet

Anti-Cyclin B1 antibody ab215436

[6 References](#) [6 Images](#)

Overview

Product name	Anti-Cyclin B1 antibody
Description	Rabbit polyclonal to Cyclin B1
Host species	Rabbit
Tested applications	Suitable for: Flow Cyt (Intra), WB, IHC-P
Species reactivity	Reacts with: Human Predicted to work with: Mouse, Rat 
Immunogen	Synthetic peptide within Mouse Cyclin B1 aa 350-450 conjugated to keyhole limpet haemocyanin. The exact immunogen sequence used to generate this antibody is proprietary information. If additional detail on the immunogen is needed to determine the suitability of the antibody for your needs, please contact our Scientific Support team to discuss your requirements. Database link: P24860 <div>  Run BLAST with  Run BLAST with </div>
Positive control	WB: HeLa, U937, U251 and K562 cell lysates. IHC-P: Human colon carcinoma tissue. . Flow Cyt (Intra): HeLa cells.
General notes	<p>The Life Science industry has been in the grips of a reproducibility crisis for a number of years. Abcam is leading the way in addressing this with our range of recombinant monoclonal antibodies and knockout edited cell lines for gold-standard validation. Please check that this product meets your needs before purchasing.</p> <p>If you have any questions, special requirements or concerns, please send us an inquiry and/or contact our Support team ahead of purchase. Recommended alternatives for this product can be found below, along with publications, customer reviews and Q&As</p>

Properties

Form	Liquid
Storage instructions	Shipped at 4°C. Store at +4°C short term (1-2 weeks). Upon delivery aliquot. Store at -20°C long term. Avoid freeze / thaw cycle.
Storage buffer	pH: 7.40 Preservative: 0.02% Proclin 300 Constituents: 50% Glycerol (glycerin, glycerine), 1% BSA, 48.98% TBS, 1X
Purity	Protein A purified

Clonality	Polyclonal
Isotype	IgG

Applications

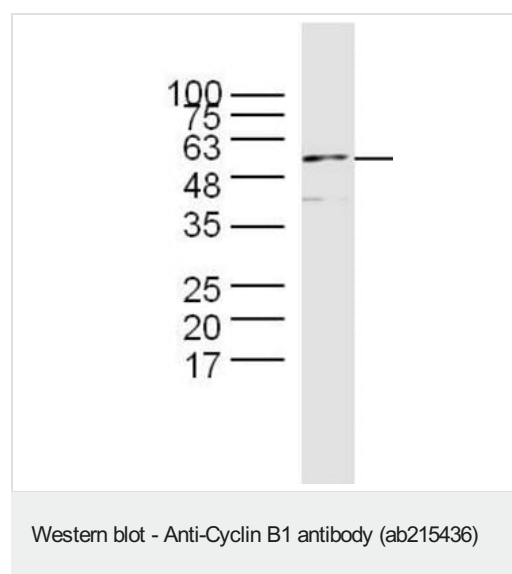
The Abpromise guarantee Our **Abpromise guarantee** covers the use of ab215436 in the following tested applications. The application notes include recommended starting dilutions; optimal dilutions/concentrations should be determined by the end user.

Application	Abreviews	Notes
Flow Cyt (Intra)		1/20 - 1/100.
WB		1/100 - 1/1000. Predicted molecular weight: 48 kDa.
IHC-P		1/100 - 1/500.

Target

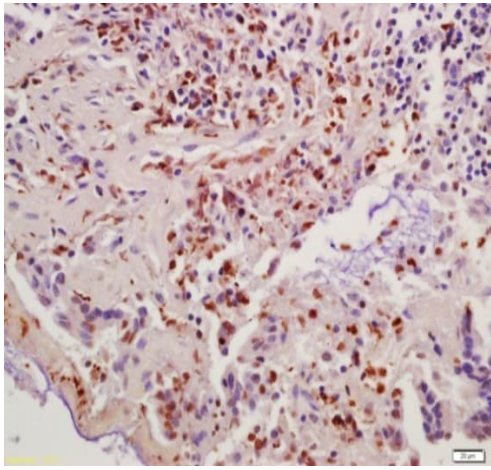
Function	Essential for the control of the cell cycle at the G2/M (mitosis) transition.
Sequence similarities	Belongs to the cyclin family. Cyclin AB subfamily.
Developmental stage	Accumulates steadily during G2 and is abruptly destroyed at mitosis.
Post-translational modifications	Ubiquitinated by the SCF(NIPA) complex during interphase, leading to its destruction. Not ubiquitinated during G2/M phases.
Cellular localization	Cytoplasm. Nucleus. Cytoplasm > cytoskeleton > centrosome.

Images



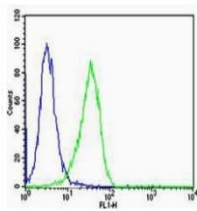
Anti-Cyclin B1 antibody (ab215436) at 1/100 dilution + HeLa cell lysates

Predicted band size: 48 kDa



Immunohistochemistry (Formalin/PFA-fixed paraffin-embedded sections) - Anti-Cyclin B1 antibody (ab215436)

Immunohistochemical analysis of formalin-fixed, paraffin-embedded Human colon carcinoma tissue labeling Cyclin B1 with ab215436 at 1/200 dilution, followed by conjugation to the secondary antibody and DAB staining



Flow Cytometry (Intracellular) - Anti-Cyclin B1 antibody (ab215436)

Intracellular flow cytometric analysis of HeLa cells labeling Cyclin B1 with ab215436 at 1/100 dilution for 60 minutes at room temperature, followed by incubation with a Goat Anti-Rabbit IgG (H+L) Alexa Fluor 488 conjugated secondary antibody.

100 —
75 —
63 —
48 —
35 —
25 —
20 —
17 —



Western blot - Anti-Cyclin B1 antibody (ab215436)

Anti-Cyclin B1 antibody (ab215436) at 1/100 dilution + U937 cell lysates

Predicted band size: 48 kDa

100 —
75 —
63 —
48 —
35 —
25 —
20 —
17 —



Western blot - Anti-Cyclin B1 antibody (ab215436)

Anti-Cyclin B1 antibody (ab215436) at 1/100 dilution + U251 cell lysates

Predicted band size: 48 kDa

100 —
75 —
63 —
48 —
35 —
25 —
20 —
17 —



Western blot - Anti-Cyclin B1 antibody (ab215436)

Anti-Cyclin B1 antibody (ab215436) at 1/100 dilution + K562 cell lysates

Predicted band size: 48 kDa

Please note: All products are "FOR RESEARCH USE ONLY. NOT FOR USE IN DIAGNOSTIC PROCEDURES"

Our Abpromise to you: Quality guaranteed and expert technical support

- Replacement or refund for products not performing as stated on the datasheet
- Valid for 12 months from date of delivery
- Response to your inquiry within 24 hours

- We provide support in Chinese, English, French, German, Japanese and Spanish
- Extensive multi-media technical resources to help you
- We investigate all quality concerns to ensure our products perform to the highest standards

If the product does not perform as described on this datasheet, we will offer a refund or replacement. For full details of the Abpromise, please visit <https://www.abcam.com/abpromise> or contact our technical team.

Terms and conditions

- Guarantee only valid for products bought direct from Abcam or one of our authorized distributors