


Product datasheet

Anti-Cyclin B1 (phospho S126) antibody ab3488

[1 References](#) [1 Image](#)

Overview

Product name	Anti-Cyclin B1 (phospho S126) antibody
Description	Rabbit polyclonal to Cyclin B1 (phospho S126)
Host species	Rabbit
Specificity	Minimal reactivity is expected with the non-phosphorylated form of the protein.
Tested applications	Suitable for: WB
Species reactivity	Reacts with: Human Predicted to work with: Mouse, Rat, Hamster, Dog, Chimpanzee 
Immunogen	Synthetic peptide corresponding to Human Cyclin B1 aa 120-131 (phospho S126). Sequence: ILVDTAS _p PSPME Database link: P14635

 [Run BLAST with](#)

 [Run BLAST with](#)

General notes

This antibody recognizes a Ser126 phosphorylation involved in an auto phosphorylation of the cdk-cyclin complex. Recognition of this phosphorylated site suggests the antibody is useful to detect the active form of the complex and may serve as a marker of mitosis.

The Life Science industry has been in the grips of a reproducibility crisis for a number of years. Abcam is leading the way in addressing this with our range of recombinant monoclonal antibodies and knockout edited cell lines for gold-standard validation. Please check that this product meets your needs before purchasing.

If you have any questions, special requirements or concerns, please send us an inquiry and/or contact our Support team ahead of purchase. Recommended alternatives for this product can be found below, along with publications, customer reviews and Q&As

Properties

Form	Liquid
Storage instructions	Shipped at 4°C. Upon delivery aliquot and store at -20°C or -80°C. Avoid repeated freeze / thaw cycles.
Storage buffer	Preservative: 0.01% Sodium azide Constituents: 0.42% Potassium phosphate, 0.87% Sodium chloride
Purity	Immunogen affinity purified

Primary antibody notes	This antibody recognizes a Ser126 phosphorylation involved in an auto phosphorylation of the cdk -cyclin complex. Recognition of this phosphorylated site suggests the antibody is useful to detect the active form of the complex and may serve as a marker of mitosis.
Clonality	Polyclonal
Isotype	IgG

Applications

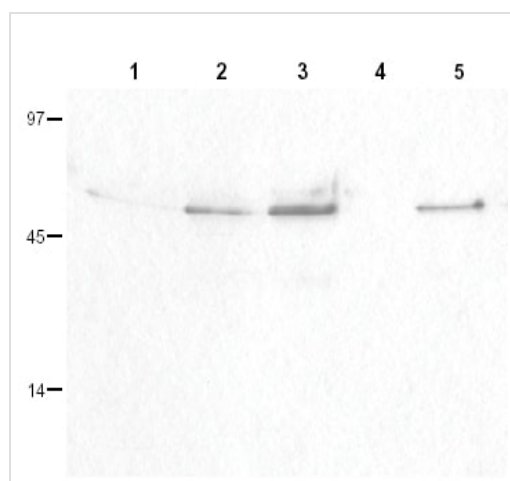
The Abpromise guarantee Our **Abpromise guarantee** covers the use of ab3488 in the following tested applications. The application notes include recommended starting dilutions; optimal dilutions/concentrations should be determined by the end user.

Application	Abreviews	Notes
WB		1/100 - 1/1000. Detects a band of approximately 48 kDa (predicted molecular weight: 48 kDa).

Target

Function	Essential for the control of the cell cycle at the G2/M (mitosis) transition.
Sequence similarities	Belongs to the cyclin family. Cyclin AB subfamily.
Developmental stage	Accumulates steadily during G2 and is abruptly destroyed at mitosis.
Post-translational modifications	Ubiquitinated by the SCF(NIPA) complex during interphase, leading to its destruction. Not ubiquitinated during G2/M phases.
Cellular localization	Cytoplasm. Nucleus. Cytoplasm > cytoskeleton > centrosome.

Images



Western blot - Anti-Cyclin B1 (phospho S126) antibody (ab3488)

All lanes : Anti-Cyclin B1 (phospho S126) antibody (ab3488) at 1/100 dilution

Lane 1 : HeLa whole cell lysate

Lane 2 : H23 whole cell lysate

Lane 3 : Hepatocarcinoma (Hep3b) cell lysate

Lane 4 : Glioblastoma (T98G) cell lysate

Lane 5 : B cell lymphoblast (Daudi) cell lysate

Lysates/proteins at 50 µg per lane.

Secondary

All lanes : HRP-conjugated Goat anti-Rabbit IgG at 1/5000 dilution

Developed using the ECL technique.

Performed under reducing conditions.

Predicted band size: 48 kDa

Exposure time: 20 seconds

Please note: All products are "FOR RESEARCH USE ONLY. NOT FOR USE IN DIAGNOSTIC PROCEDURES"

Our Abpromise to you: Quality guaranteed and expert technical support

- Replacement or refund for products not performing as stated on the datasheet
- Valid for 12 months from date of delivery
- Response to your inquiry within 24 hours
- We provide support in Chinese, English, French, German, Japanese and Spanish
- Extensive multi-media technical resources to help you
- We investigate all quality concerns to ensure our products perform to the highest standards

If the product does not perform as described on this datasheet, we will offer a refund or replacement. For full details of the Abpromise, please visit <https://www.abcam.com/abpromise> or contact our technical team.

Terms and conditions

- Guarantee only valid for products bought direct from Abcam or one of our authorized distributors