

Product datasheet

Anti-Cyclin B2/CCNB2 antibody [R17985] ab185622

Recombinant RabMAb

[13 References](#) [10 Images](#)

Overview

Product name	Anti-Cyclin B2/CCNB2 antibody [R17985]
Description	Rabbit monoclonal [R17985] to Cyclin B2/CCNB2
Host species	Rabbit
Tested applications	Suitable for: IP, ICC/IF, WB, IHC-P
Species reactivity	Reacts with: Mouse, Rat, Human
Immunogen	Recombinant fragment. This information is proprietary to Abcam and/or its suppliers.
Positive control	WB: SW480, HeLa, A549, C6 and PC-12 whole cell lysates; Mouse and rat testis lysates. IHC-P: Human colon, Human colon cancer and rat testis tissues. ICC/IF: PC-12 and SW480 cells. IP: HeLa whole cell lysate.
General notes	<p>This product is a recombinant monoclonal antibody, which offers several advantages including:</p> <ul style="list-style-type: none">- High batch-to-batch consistency and reproducibility- Improved sensitivity and specificity- Long-term security of supply- Animal-free production <p>For more information see here.</p> <p>Our RabMAb[®] technology is a patented hybridoma-based technology for making rabbit monoclonal antibodies. For details on our patents, please refer to RabMAb[®] patents.</p>

Properties

Form	Liquid
Storage instructions	Shipped at 4°C. Store at +4°C short term (1-2 weeks). Upon delivery aliquot. Store at -20°C long term. Avoid freeze / thaw cycle.
Storage buffer	pH: 7.2 Preservative: 0.01% Sodium azide Constituents: 59% PBS, 40% Glycerol (glycerin, glycerine), 0.05% BSA
Purity	Protein A purified
Clonality	Monoclonal
Clone number	R17985

Isotype

IgG

Applications

The Abpromise guarantee

Our **Abpromise guarantee** covers the use of ab185622 in the following tested applications.

The application notes include recommended starting dilutions; optimal dilutions/concentrations should be determined by the end user.

Application	Abreviews	Notes
IP		1/80.
ICC/IF		1/500.
WB		1/1000. Detects a band of approximately 45 kDa (predicted molecular weight: 45 kDa).
IHC-P		1/100. Perform heat mediated antigen retrieval with Tris/EDTA buffer pH 9.0 before commencing with IHC staining protocol. Recommended for human and rat but not mouse.

Target

Function

Essential for the control of the cell cycle at the G2/M (mitosis) transition.

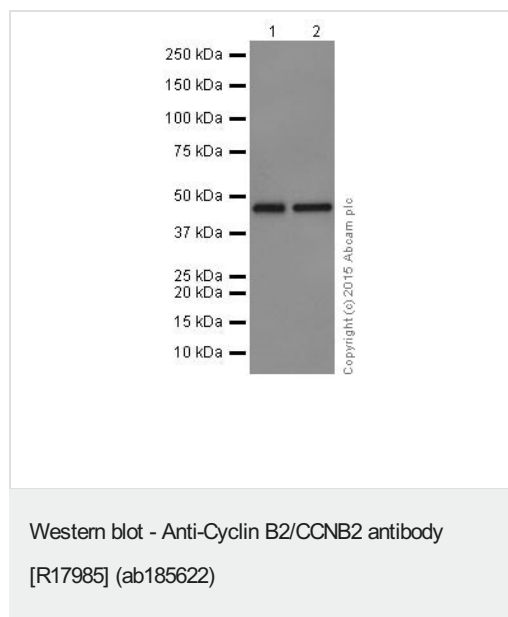
Sequence similarities

Belongs to the cyclin family. Cyclin AB subfamily.

Developmental stage

Accumulates steadily during G2 and is abruptly destroyed at mitosis.

Images



All lanes : Anti-Cyclin B2/CCNB2 antibody [R17985] (ab185622) at 1/1000 dilution

Lane 1 : SW480 (Human colon adenocarcinoma cell line) whole cell lysate

Lane 2 : HeLa (Human epithelial cells from cervix adenocarcinoma) whole cell lysate

Lysates/proteins at 20 µg per lane.

Secondary

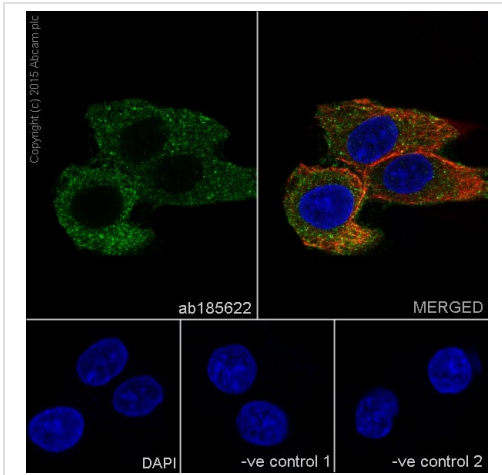
All lanes : Anti-Rabbit IgG (HRP), specific to the non-reduced form of IgG at 1/1000 dilution

Predicted band size: 45 kDa

Observed band size: 45 kDa

Exposure time: 3 minutes

Blocking/Dilution buffer: 5% NFDM/TBST.



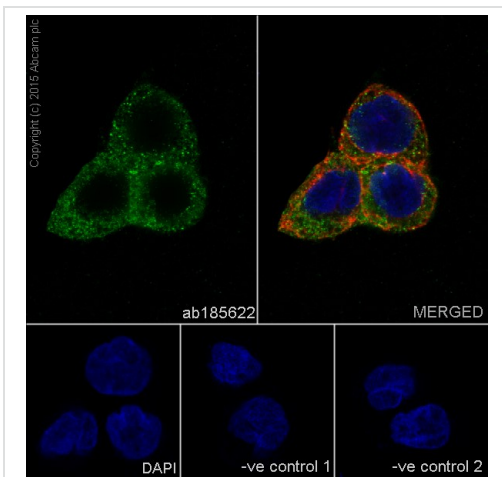
Immunocytochemistry/ Immunofluorescence - Anti-Cyclin B2/CCNB2 antibody [R17985] (ab185622)

Immunofluorescent analysis of 4% paraformaldehyde-fixed, 0.1% Triton X-100 permeabilized PC-12 (Rat adrenal gland pheochromocytoma) cells labeling Cyclin B2/CCNB2 with ab185622 at 1/500 dilution, followed by Goat anti-rabbit IgG (Alexa Fluor® 488) (**ab150077**) secondary antibody at 1/500 dilution (green). Confocal image showing cytoplasmic staining on PC-12 cell line. The nuclear counter stain is DAPI (blue). Tubulin is detected with **ab7291** (anti-Tubulin mouse mAb) at 1/1000 dilution and **ab150120** (AlexaFluor®594 Goat anti-Mouse secondary) at 1/500 dilution (red).

The negative controls are as follows;

-ve control 1: ab185622 at 1/500 dilution followed by **ab150120** (AlexaFluor®594 Goat anti-Mouse secondary) at 1/500 dilution.

-ve control 2: **ab7291** (anti-Tubulin mouse mAb) at 1/1000 dilution followed by **ab150077** (Alexa Fluor®488 Goat Anti-Rabbit IgG H&L) at 1/500 dilution.



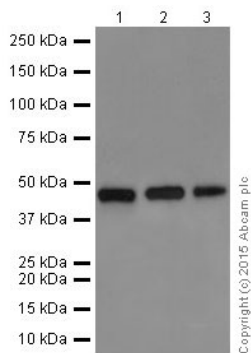
Immunocytochemistry/ Immunofluorescence - Anti-Cyclin B2/CCNB2 antibody [R17985] (ab185622)

Immunofluorescent analysis of 4% paraformaldehyde-fixed, 0.1% Triton X-100 permeabilized SW480 (Human colon adenocarcinoma cell line) cells labeling Cyclin B2/CCNB2 with ab185622 at 1/500 dilution, followed by Goat anti-rabbit IgG (Alexa Fluor® 488) (**ab150077**) secondary antibody at 1/500 dilution (green). Confocal image showing cytoplasmic staining on SW480 cell line. The nuclear counter stain is DAPI (blue). Tubulin is detected with **ab7291** (anti-Tubulin mouse mAb) at 1/1000 dilution and **ab150120** (AlexaFluor®594 Goat anti-Mouse secondary) at 1/500 dilution (red).

The negative controls are as follows;

-ve control 1: ab185622 at 1/500 dilution followed by **ab150120** (AlexaFluor®594 Goat anti-Mouse secondary) at 1/500 dilution.

-ve control 2: **ab7291** (anti-Tubulin mouse mAb) at 1/1000 dilution followed by **ab150077** (Alexa Fluor®488 Goat Anti-Rabbit IgG H&L) at 1/500 dilution.



Western blot - Anti-Cyclin B2/CCNB2 antibody
[R17985] (ab185622)

All lanes : Anti-Cyclin B2/CCNB2 antibody [R17985] (ab185622)
at 1/5000 dilution

Lane 1 : A549 (Human lung carcinoma) whole cell lysate

Lane 2 : Mouse testis lysate

Lane 3 : Rat testis lysate

Lysates/proteins at 20 µg per lane.

Secondary

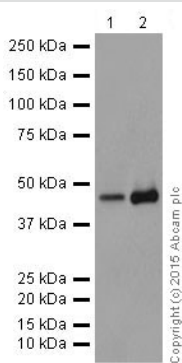
All lanes : Goat Anti-Rabbit IgG H&L (HRP) ([ab97051](#)) at 1/1000
dilution

Predicted band size: 45 kDa

Observed band size: 45 kDa

Exposure time: 3 minutes

Blocking/Dilution buffer: 5% NFDm/TBST.



Western blot - Anti-Cyclin B2/CCNB2 antibody
[R17985] (ab185622)

All lanes : Anti-Cyclin B2/CCNB2 antibody [R17985] (ab185622)
at 1/1000 dilution

Lane 1 : C6 (Rat glial tumor cells) whole cell lysate

Lane 2 : PC-12 (Rat adrenal gland pheochromocytoma) whole cell
lysate

Lysates/proteins at 20 µg per lane.

Secondary

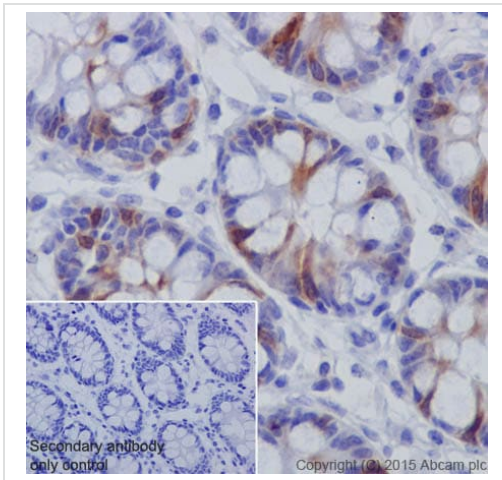
All lanes : Goat Anti-Rabbit IgG H&L (HRP) ([ab97051](#)) at 1/1000
dilution

Predicted band size: 45 kDa

Observed band size: 45 kDa

Exposure time: 30 seconds

Blocking/Dilution buffer: 5% NFDM/TBST.

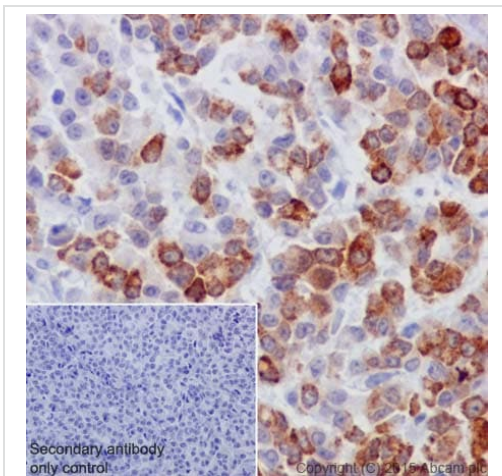


Immunohistochemistry (Formalin/PFA-fixed paraffin-embedded sections) - Anti-Cyclin B2/CCNB2 antibody [R17985] (ab185622)

Immunohistochemical analysis of paraffin-embedded Human colon tissue labeling Cyclin B2/CCNB2 with ab185622 at 1/100 dilution, followed by Goat Anti-Rabbit IgG H&L (HRP) ([ab97051](#)) secondary antibody at 1/500 dilution. Cytoplasmic staining on normal Human colon epithelium is observed. Counter stained with Hematoxylin.

Secondary antibody only control: Used PBS instead of primary antibody, secondary antibody is Goat Anti-Rabbit IgG H&L (HRP) ([ab97051](#)) at 1/500 dilution.

Perform heat mediated antigen retrieval with Tris/EDTA buffer pH 9.0 before commencing with IHC staining protocol.

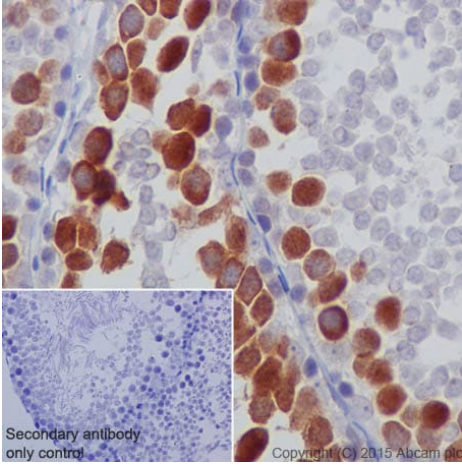


Immunohistochemistry (Formalin/PFA-fixed paraffin-embedded sections) - Anti-Cyclin B2/CCNB2 antibody [R17985] (ab185622)

Immunohistochemical analysis of paraffin-embedded Human colon cancer tissue labeling Cyclin B2/CCNB2 with ab185622 at 1/100 dilution, followed by Goat Anti-Rabbit IgG H&L (HRP) ([ab97051](#)) secondary antibody at 1/500 dilution. Cytoplasmic staining on tumor cells of Human colon epithelium is observed. Counter stained with Hematoxylin.

Secondary antibody only control: Used PBS instead of primary antibody, secondary antibody is Goat Anti-Rabbit IgG H&L (HRP) ([ab97051](#)) at 1/500 dilution.

Perform heat mediated antigen retrieval with Tris/EDTA buffer pH 9.0 before commencing with IHC staining protocol.

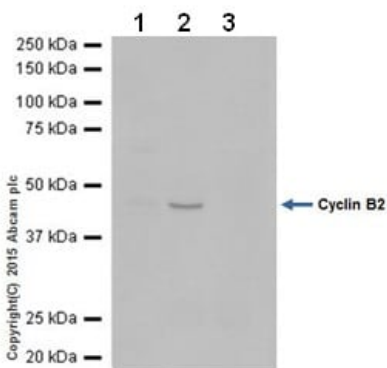


Immunohistochemistry (Formalin/PFA-fixed paraffin-embedded sections) - Anti-Cyclin B2/CCNB2 antibody [R17985] (ab185622)

Immunohistochemical analysis of paraffin-embedded Rat testis tissue labeling Cyclin B2/CCNB2 with ab185622 at 1/100 dilution, followed by Goat Anti-Rabbit IgG H&L (HRP) (**ab97051**) secondary antibody at 1/500 dilution. Cytoplasmic staining on spermatocytes of rat testis is observed. Counter stained with Hematoxylin.

Secondary antibody only control: Used PBS instead of primary antibody, secondary antibody is Goat Anti-Rabbit IgG H&L (HRP) (**ab97051**) at 1/500 dilution.

Perform heat mediated antigen retrieval with Tris/EDTA buffer pH 9.0 before commencing with IHC staining protocol.



Immunoprecipitation - Anti-Cyclin B2/CCNB2 antibody [R17985] (ab185622)

Cyclin B2/CCNB2 was immunoprecipitated from 1mg of HeLa (Human epithelial cells from cervix adenocarcinoma) whole cell lysate with ab185622 at 1/80 dilution. Western blot was performed from the immunoprecipitate using ab185622 at 1/1000 dilution. Anti-Rabbit IgG (HRP), specific to the non-reduced form of IgG, was used as secondary antibody at 1/1500 dilution.

Lane 1: HeLa whole cell lysate 10 µg (Input).

Lane 2: ab185622 IP in HeLa whole cell lysate.

Lane 3: Rabbit monoclonal IgG (**ab172730**) instead of ab185622 in HeLa whole cell lysate.

Blocking and dilution buffer and concentration: 5% NFDN/TBST.

Exposure time:10 seconds

Why choose a recombinant antibody?



Research with confidence
Consistent and reproducible results



Long-term and scalable supply
Recombinant technology



Success from the first experiment
Confirmed specificity



Ethical standards compliant
Animal-free production

Anti-Cyclin B2/CCNB2 antibody [R17985]
(ab185622)

Please note: All products are "FOR RESEARCH USE ONLY. NOT FOR USE IN DIAGNOSTIC PROCEDURES"

Our Abpromise to you: Quality guaranteed and expert technical support

- Replacement or refund for products not performing as stated on the datasheet
- Valid for 12 months from date of delivery
- Response to your inquiry within 24 hours
- We provide support in Chinese, English, French, German, Japanese and Spanish
- Extensive multi-media technical resources to help you
- We investigate all quality concerns to ensure our products perform to the highest standards

If the product does not perform as described on this datasheet, we will offer a refund or replacement. For full details of the Abpromise, please visit <https://www.abcam.com/abpromise> or contact our technical team.

Terms and conditions

- Guarantee only valid for products bought direct from Abcam or one of our authorized distributors