

## Product datasheet

### Anti-Cyclin B2/CCNB2 antibody [X121.10] ab10839

★★★★★ [1 Abreviews](#) [5 References](#) [1 Image](#)

#### Overview

|                            |                                                                                                                                                                                                                                                                                                                                                                                                                                                                                                                                                                                                                 |
|----------------------------|-----------------------------------------------------------------------------------------------------------------------------------------------------------------------------------------------------------------------------------------------------------------------------------------------------------------------------------------------------------------------------------------------------------------------------------------------------------------------------------------------------------------------------------------------------------------------------------------------------------------|
| <b>Product name</b>        | Anti-Cyclin B2/CCNB2 antibody [X121.10]                                                                                                                                                                                                                                                                                                                                                                                                                                                                                                                                                                         |
| <b>Description</b>         | Mouse monoclonal [X121.10] to Cyclin B2/CCNB2                                                                                                                                                                                                                                                                                                                                                                                                                                                                                                                                                                   |
| <b>Host species</b>        | Mouse                                                                                                                                                                                                                                                                                                                                                                                                                                                                                                                                                                                                           |
| <b>Specificity</b>         | ab10839 blots only cyclin B2/CCNB2, but cross reacts strongly with two other proteins. However, these can easily be distinguished from cyclins since they are present in interphase extracts and run well below the cyclins on SDS PAGE gels.                                                                                                                                                                                                                                                                                                                                                                   |
| <b>Tested applications</b> | <b>Suitable for:</b> WB                                                                                                                                                                                                                                                                                                                                                                                                                                                                                                                                                                                         |
| <b>Species reactivity</b>  | <b>Reacts with:</b> <i>Xenopus laevis</i>                                                                                                                                                                                                                                                                                                                                                                                                                                                                                                                                                                       |
| <b>Immunogen</b>           | Full length native protein (purified) corresponding to <i>Xenopus laevis</i> Cyclin B2/CCNB2.                                                                                                                                                                                                                                                                                                                                                                                                                                                                                                                   |
| <b>Epitope</b>             | The epitope for X121 lies within a region spanning the amino acids 1-112.                                                                                                                                                                                                                                                                                                                                                                                                                                                                                                                                       |
| <b>Positive control</b>    | <i>Xenopus</i> egg extract.                                                                                                                                                                                                                                                                                                                                                                                                                                                                                                                                                                                     |
| <b>General notes</b>       | <p>The Life Science industry has been in the grips of a reproducibility crisis for a number of years. Abcam is leading the way in addressing this with our range of recombinant monoclonal antibodies and knockout edited cell lines for gold-standard validation. Please check that this product meets your needs before purchasing.</p> <p>If you have any questions, special requirements or concerns, please send us an inquiry and/or contact our Support team ahead of purchase. Recommended alternatives for this product can be found below, along with publications, customer reviews and Q&amp;As</p> |

#### Properties

|                             |                                                                                                         |
|-----------------------------|---------------------------------------------------------------------------------------------------------|
| <b>Form</b>                 | Liquid                                                                                                  |
| <b>Storage instructions</b> | Shipped at 4°C. Upon delivery aliquot and store at -20°C or -80°C. Avoid repeated freeze / thaw cycles. |
| <b>Storage buffer</b>       | Preservative: 0.02% Sodium azide<br>Constituent: 99.98% PBS                                             |
| <b>Purity</b>               | Protein A purified                                                                                      |
| <b>Clonality</b>            | Monoclonal                                                                                              |
| <b>Clone number</b>         | X121.10                                                                                                 |
| <b>Myeloma</b>              | Sp2                                                                                                     |

Isotype

IgG1

## Applications

### The Abpromise guarantee

Our **Abpromise guarantee** covers the use of ab10839 in the following tested applications.

The application notes include recommended starting dilutions; optimal dilutions/concentrations should be determined by the end user.

| Application | Abreviews | Notes                                                               |
|-------------|-----------|---------------------------------------------------------------------|
| WB          | ★★★★★ (1) | Use a concentration of 1 µg/ml. Predicted molecular weight: 48 kDa. |

## Target

### Function

Essential for the control of the cell cycle at the G2/M (mitosis) transition.

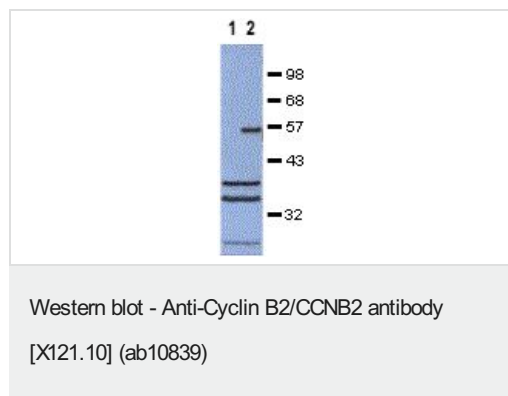
### Sequence similarities

Belongs to the cyclin family. Cyclin AB subfamily.

### Developmental stage

Accumulates steadily during G2 and is abruptly destroyed at mitosis.

## Images



**All lanes :** Anti-Cyclin B2/CCNB2 antibody [X121.10] (ab10839) at 1 µg/ml

**Lane 1 :** Interphase Xenopus egg extracts (cyclin B destroyed)

**Lane 2 :** Mitotic (CSF) Xenopus egg extracts (cyclin B present)

**Predicted band size:** 48 kDa

**Observed band size:** 54 kDa

**Additional bands at:** 38 kDa (possible cross reactivity), 40 kDa (possible cross reactivity)

**Please note:** All products are "FOR RESEARCH USE ONLY. NOT FOR USE IN DIAGNOSTIC PROCEDURES"

## Our Abpromise to you: Quality guaranteed and expert technical support

- Replacement or refund for products not performing as stated on the datasheet
- Valid for 12 months from date of delivery
- Response to your inquiry within 24 hours
- We provide support in Chinese, English, French, German, Japanese and Spanish
- Extensive multi-media technical resources to help you
- We investigate all quality concerns to ensure our products perform to the highest standards

If the product does not perform as described on this datasheet, we will offer a refund or replacement. For full details of the Abpromise, please visit <https://www.abcam.com/abpromise> or contact our technical team.

#### **Terms and conditions**

---

- Guarantee only valid for products bought direct from Abcam or one of our authorized distributors