


## Product datasheet

# Anti-Cyclin K antibody ab85854

★☆☆☆☆ [1 Abreviews](#) [2 References](#) [4 Images](#)

### Overview

---

<b>Product name</b>	Anti-Cyclin K antibody
<b>Description</b>	Rabbit polyclonal to Cyclin K
<b>Host species</b>	Rabbit
<b>Tested applications</b>	<b>Suitable for:</b> IP, WB, IHC-P
<b>Species reactivity</b>	<b>Reacts with:</b> Mouse, Human <b>Predicted to work with:</b> Rat, Guinea pig, Cow, Dog, Pig, Chimpanzee, Rhesus monkey, Opossum, Elephant 
<b>Immunogen</b>	Synthetic peptide corresponding to Human Cyclin K aa 500-600. Database link: <a href="#">O75909</a>
<b>Positive control</b>	WB: HEK-293T, MCF7, Jurkat, HeLa, HepG2, NIH3T3, CH27, TCMK-1, BW5147.3 and CT26 cell lysates IP: HEK-293T cell lysate IHC-P: Human lung carcinoma
<b>General notes</b>	<p>The Life Science industry has been in the grips of a reproducibility crisis for a number of years. Abcam is leading the way in addressing this with our range of recombinant monoclonal antibodies and knockout edited cell lines for gold-standard validation. Please check that this product meets your needs before purchasing.</p> <p>If you have any questions, special requirements or concerns, please send us an inquiry and/or contact our Support team ahead of purchase. Recommended alternatives for this product can be found below, along with publications, customer reviews and Q&amp;As</p>

### Properties

---

<b>Form</b>	Liquid
<b>Storage instructions</b>	Shipped at 4°C. Upon delivery aliquot and store at -20°C. Avoid freeze / thaw cycles.
<b>Storage buffer</b>	pH: 7 Preservative: 0.09% Sodium azide Constituent: Tris citrate/phosphate
<b>Purity</b>	Immunogen affinity purified
<b>Purification notes</b>	ab85854 was affinity purified using an epitope specific to Cyclin K immobilized on solid support.
<b>Clonality</b>	Polyclonal
<b>Isotype</b>	IgG

## Applications

### The Abpromise guarantee

Our **Abpromise guarantee** covers the use of ab85854 in the following tested applications.

The application notes include recommended starting dilutions; optimal dilutions/concentrations should be determined by the end user.

Application	Abreviews	Notes
IP		Use at 2-10 µg/mg of lysate.
WB		1/2000 - 1/10000. Predicted molecular weight: 66 kDa.
IHC-P		1/1000 - 1/5000. Perform heat mediated antigen retrieval with citrate buffer pH 6 before commencing with IHC staining protocol.

## Target

### Function

May play a role in transcriptional regulation. In vitro, is associated with a kinase activity toward both RNA polymerase II C-terminal domain and CDK2 (CAK).

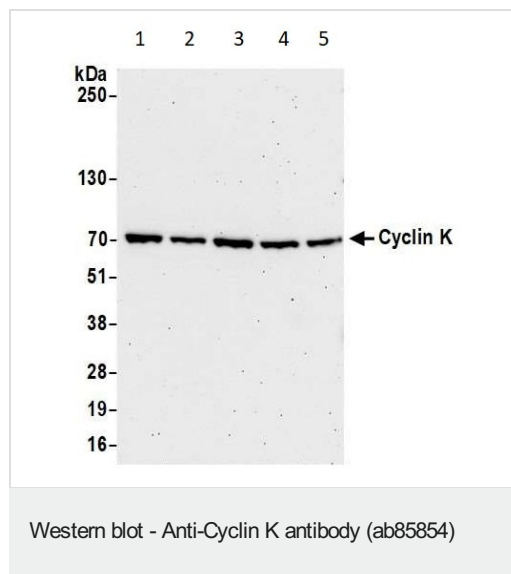
### Tissue specificity

Ubiquitously expressed. Highest levels in testis.

### Sequence similarities

Belongs to the cyclin family. Cyclin C subfamily.

## Images



**All lanes :** Anti-Cyclin K antibody (ab85854) at 0.04 µg/ml

**Lane 1 :** HEK-293T (Human epithelial cell line from embryonic kidney transformed with large T antigen) whole cell lysate

**Lane 2 :** MCF7 (Human breast adenocarcinoma cell line) whole cell lysate

**Lane 3 :** Jurkat (Human T cell leukemia cell line from peripheral blood) whole cell lysate

**Lane 4 :** HeLa (Human epithelial cell line from cervix adenocarcinoma) whole cell lysate

**Lane 5 :** HepG2 (Human liver hepatocellular carcinoma cell line) whole cell lysate

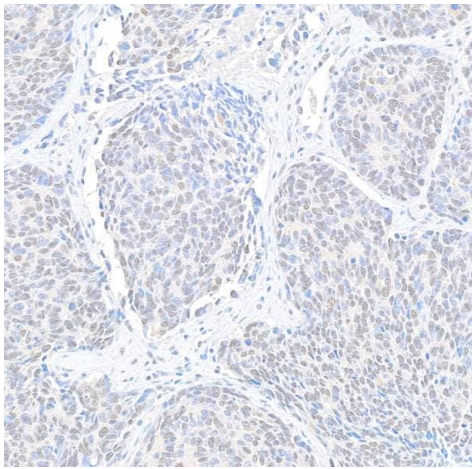
Lysates/proteins at 50 µg per lane.

**Predicted band size:** 66 kDa

**Exposure time:** 75 seconds

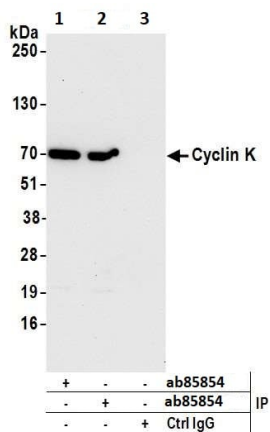
Detection: Chemiluminescence

Cells prepared using NETN lysis buffer



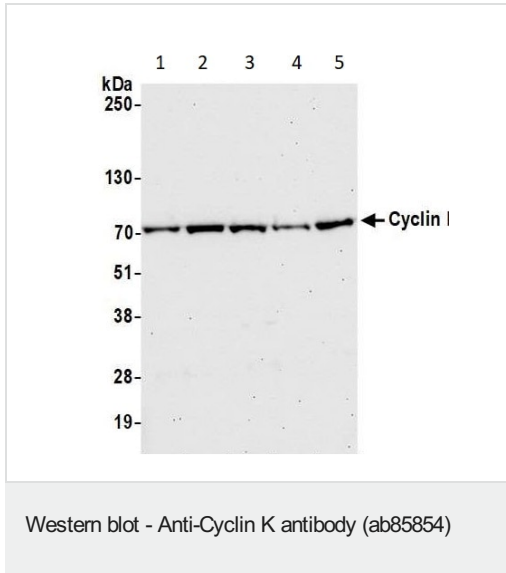
Immunohistochemical analysis of Formalin/PFA-fixed paraffin-embedded human lung carcinoma sections labeling Cyclin K with ab85854 at a dilution of 1/5000 (0.2 µg/mL). Detection: DAB

Immunohistochemistry (Formalin/PFA-fixed paraffin-embedded sections) - Anti-Cyclin K antibody (ab85854)



Detection of human Cyclin K by western blot of immunoprecipitates. Samples: Whole cell lysate (1.0 mg per IP reaction; 20% of IP loaded) from HEK293T cells prepared using NETN lysis buffer. Antibodies: Affinity purified rabbit anti-Cyclin K antibody ab85854 used for IP at 6 µg per reaction. Cyclin K was also immunoprecipitated by a previous lot of this antibody. For blotting immunoprecipitated Cyclin K, ab85854 was used at 0.04 µg/mL. Detection: Chemiluminescence with an exposure time of 10 seconds.

Immunoprecipitation - Anti-Cyclin K antibody (ab85854)



**All lanes :** Anti-Cyclin K antibody (ab85854) at 0.04 µg/ml

**Lane 1 :** NIH3T3 whole cell lysate

**Lane 2 :** CH27 whole cell lysate

**Lane 3 :** TCMK-1 whole cell lysate

**Lane 4 :** BW5147.3 whole cell lysate

**Lane 5 :** CT26 whole cell lysate

Lysates/proteins at 50 µg per lane.

**Predicted band size:** 66 kDa

**Exposure time:** 30 seconds

Detection: Chemiluminescence

Cells prepared using NETN lysis buffer

**Please note:** All products are "FOR RESEARCH USE ONLY. NOT FOR USE IN DIAGNOSTIC PROCEDURES"

### Our Abpromise to you: Quality guaranteed and expert technical support

- Replacement or refund for products not performing as stated on the datasheet
- Valid for 12 months from date of delivery
- Response to your inquiry within 24 hours
- We provide support in Chinese, English, French, German, Japanese and Spanish
- Extensive multi-media technical resources to help you
- We investigate all quality concerns to ensure our products perform to the highest standards

If the product does not perform as described on this datasheet, we will offer a refund or replacement. For full details of the Abpromise, please visit <https://www.abcam.com/abpromise> or contact our technical team.

### Terms and conditions

- 
- Guarantee only valid for products bought direct from Abcam or one of our authorized distributors