


Product datasheet

Anti-Cyclin T1 antibody ab264325

3 Images

Overview

Product name	Anti-Cyclin T1 antibody
Description	Rabbit polyclonal to Cyclin T1
Host species	Rabbit
Tested applications	Suitable for: IP, IHC-P, WB
Species reactivity	Reacts with: Human Predicted to work with: Chimpanzee 
Immunogen	Synthetic peptide within Human Cyclin T1 aa 325-375. The exact sequence is proprietary. NP_001231.2 Database link: O60563
Positive control	IHC-P: Human breast carcinoma tissue. WB: HeLa and HEK-293T whole cell lysate. IP: HeLa whole cell lysate.
General notes	<p>The Life Science industry has been in the grips of a reproducibility crisis for a number of years. Abcam is leading the way in addressing this with our range of recombinant monoclonal antibodies and knockout edited cell lines for gold-standard validation. Please check that this product meets your needs before purchasing.</p> <p>If you have any questions, special requirements or concerns, please send us an inquiry and/or contact our Support team ahead of purchase. Recommended alternatives for this product can be found below, along with publications, customer reviews and Q&As</p>

Properties

Form	Liquid
Storage instructions	Shipped at 4°C. Store at +4°C short term (1-2 weeks). Upon delivery aliquot. Store at -20°C. Avoid freeze / thaw cycle.
Storage buffer	pH: 6.8 Preservative: 0.09% Sodium azide Constituents: Tris buffered saline, 0.1% BSA
Purity	Immunogen affinity purified
Clonality	Polyclonal
Isotype	IgG

Applications

The Abpromise guarantee

Our **Abpromise guarantee** covers the use of ab264325 in the following tested applications.

The application notes include recommended starting dilutions; optimal dilutions/concentrations should be determined by the end user.

Application	Abreviews	Notes
IP		Use at 2-10 µg/mg of lysate.
IHC-P		1/100 - 1/500.
WB		1/2000 - 1/10000. Predicted molecular weight: 81 kDa.

Target

Function

Regulatory subunit of the cyclin-dependent kinase pair (CDK9/cyclin-T1) complex, also called positive transcription elongation factor B (P-TEFb), which is proposed to facilitate the transition from abortive to productive elongation by phosphorylating the CTD (carboxy-terminal domain) of the large subunit of RNA polymerase II (RNA Pol II). In case of HIV or SIV infections, binds to the transactivation domain of the viral nuclear transcriptional activator, Tat, thereby increasing Tat's affinity for the transactivating response RNA element (TAR RNA). Serves as an essential cofactor for Tat, by promoting RNA Pol II activation, allowing transcription of viral genes.

Tissue specificity

Ubiquitously expressed.

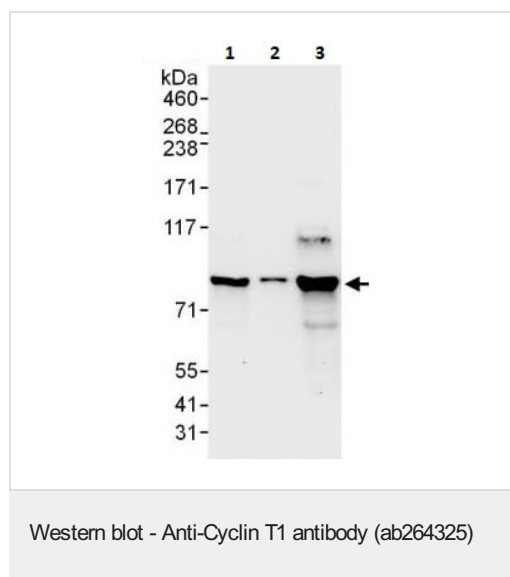
Sequence similarities

Belongs to the cyclin family. Cyclin C subfamily.

Cellular localization

Nucleus.

Images



All lanes : Anti-Cyclin T1 antibody (ab264325) at 0.04 µg/ml

Lane 1 : HeLa whole cell lysate at 50 µg

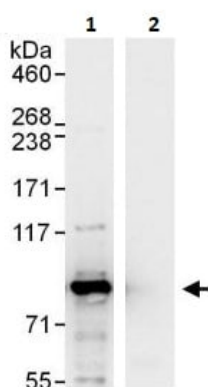
Lane 2 : HeLa whole cell lysate at 15 µg

Lane 3 : HEK-293T whole cell lysate at 50 µg

Predicted band size: 81 kDa

Exposure time: 30 seconds

4-8% SDS-PAGE.



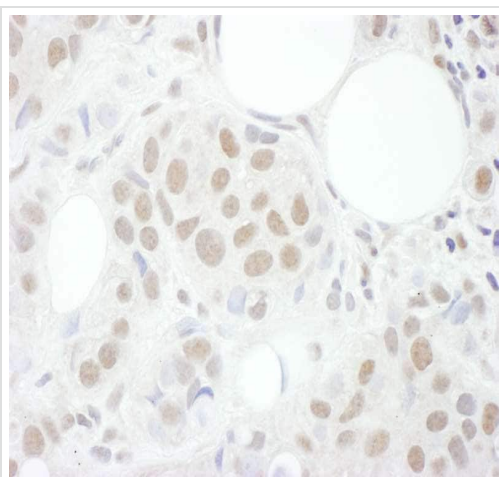
Immunoprecipitation - Anti-Cyclin T1 antibody
(ab264325)

Cyclin T1 was immunoprecipitated from 1mg of HeLa (Human epithelial cell line from cervix adenocarcinoma) whole cell lysate with ab264325 at 6 µg/mg lysate. Western blot was performed from the immunoprecipitate using ab264325 at 1 µg/ml.

Lane 1: ab264325 IP in HeLa whole cell lysate.

Lane 2: Control IgG.

Exposure time: 3 secs.



Immunohistochemistry (Formalin/PFA-fixed paraffin-embedded sections) - Anti-Cyclin T1 antibody
(ab264325)

Immunohistochemical analysis of formalin-fixed, paraffin-embedded human breast carcinoma tissue labeling Cyclin T1 with ab264325 at 1/200 dilution. Detection: DAB.

Please note: All products are "FOR RESEARCH USE ONLY. NOT FOR USE IN DIAGNOSTIC PROCEDURES"

Our Abpromise to you: Quality guaranteed and expert technical support

- Replacement or refund for products not performing as stated on the datasheet
- Valid for 12 months from date of delivery
- Response to your inquiry within 24 hours
- We provide support in Chinese, English, French, German, Japanese and Spanish
- Extensive multi-media technical resources to help you
- We investigate all quality concerns to ensure our products perform to the highest standards

If the product does not perform as described on this datasheet, we will offer a refund or replacement. For full details of the Abpromise, please visit <https://www.abcam.com/abpromise> or contact our technical team.

Terms and conditions

- Guarantee only valid for products bought direct from Abcam or one of our authorized distributors